

**1. St. John the Divine Anglican Church**



Construction Date: 1882  
102 4th St.  
Builder: Rev. J.F. Rounthwaite

Features of Interest

- lumber came precut – shipped up the Assiniboine on the S.S. Alpha and by ox-cart to the building site in Naughton (Rounthwaite)
- oldest standing Anglican Church west of Portage La Prairie

**2. St. Paul's Anglican Church**



Construction Date: 1900  
Cliff Street

Called “Episcopalian” on 1912 Fire Insurance Map  
Stones supplied by W. Horton and W.H. Girling  
Construction management – Geo. Burgess – an architect from Windsor Ont.  
Carpentry John Burgess  
Brickwork George Bissett

Features of Interest

- nice windows including one large commemorative window stained glass - in memory of son of Mutual Manager who died in a plane crash

**3. St. Andrew's Presbyterian Church**



Construction Date: 1892  
Cliff Street  
Union Church (1912)  
United Church (1925)  
Now a residence

Building Features of Interest:

First wedding – Nellie McLung (Mooney) 1895  
-Methodist Church (1890) added as addition in 1917 (Local Union in 1912)

**4. Methodist Church – Wawanesa**

Built in 1890 on the corner of 5<sup>th</sup> and Cliff Street.  
Regular services began in May of 1890.  
In 1917 the building was moved and annexed to the larger Presbyterian Church.

**5. Wawanesa Cemetery**



Established: 1891 / 1893  
NE 23-1-17  
Land purchased from Samuel Lyle

**6. Wawanesa War Memorial**



Construction Date: 1921  
Cliff Street

**7. Millford Methodist Church**



Millford Church and School  
A sketch by  
T.J. Cooper 1890 (Manitoba Archives)



Photo: "Sipiweske"

The church was moved to Treesbank and became a United Church.  
<http://www.virtualmanitoba.com/FalseStarts/Millford/index.htm>

**8. Millford Cemetery**



**9. Treesbank Presbyterian Church**

**No photo available**

Treesbank Presbyterian Church – built 1893 by J. McCrum. The first Minister was Rev. Currie. It later was used as a store.

**10. Treesbank Anglican**

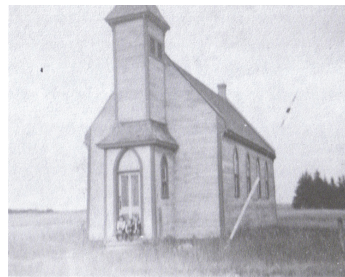
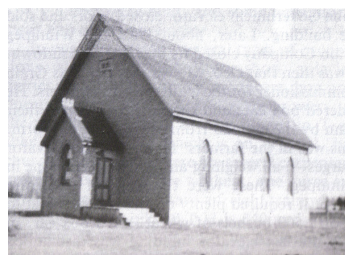


Photo: Sipiweske P 64  
Built in 1890 by John Harms.

**11. Methven United (Methodist) 1891**



Methven United Church in 1926  
Source: Sipiweske – P 68 (Photo)

**12. Methven Cemetery**



Construction Date: 1891  
SE 33-7-17

**13. Rounthwaite Church Cairn**

Village of Rounthwaite



Source: Historic Sites of Manitoba  
Photo – Gordon Goldsboro

Rounthwaite Church which operated here as a Presbyterian Church from 1891 to 1925 then, after the unification of the Presbyterians with Methodists and Congregationalists, as a United Church from 1925 to 1971.

**14. Rounthwaite Cemetery**



Construction Date: 1882 SW 23-8-18

**Features of Interest:**

- Rounthwaite (officially Naughton) situated nearby in 1882 – relocated to be on the Wawanesa - Brandon RR line. St. John the Divine Anglican Church built here in 1882 – moved with the village – now in Wawanesa at the Sipiweske Museum

**15. Nesbitt United**



Oakland Commemorative Cairn (Nesbitt, RM of Oakland)

Source: Historic Sites of Manitoba

Built as Nesbitt Presbyterian in 1892.

Source and Photo: Sipiweske P 95-96

<http://www.mhs.mb.ca/docs/sites/oakland.shtml>



**16. Minnewawa Church Services**

First Church services were held in the Berbank district at the home of Mr. and Mrs. William English. After the Minnewawa School was built in 1885, services were held there with Rev. Cally the first minister, followed by Re. Shearer.

**17. Minnewawa Cemetery (RM of Oakland)**

The cemetery, established in 1889 in the Rural Municipality of Oakland, contains a cairn commemorating the pioneers of the communities of Minnewawa (1885-1957), Nesbitt (1893-1968), Chesley (1882-1966), Bertha (1896-1961), Riverbank (1886-1953), and Delton (1883-1967).

Source: Historic Sites of Manitoba

<http://www.mhs.mb.ca/docs/sites/minnewawacemetery.shtml>



Minnewawa Cemetery (2010)  
Source: Gordon Goldsborough

**18. Berbank Union Church** NE 36-6-19



Construction Date: 1919  
(RM of Whitewater)  
<http://www.mhs.mb.ca/docs/sites/berbankchurch.shtml>

In 1919, the school districts of Bertha and Riverbank united to build a church as a memorial to four men, Jack Fisher, Harry Hardwick, Harry Martin, and Cecil Minary who gave their lives in the First World War. Source; Historic Sites of Manitoba  
<http://www.mhs.mb.ca/docs/sites/berbankchurch.shtml>

- Wm. English donated the building site
- volunteer labour

Closed 1966

**19. Patterson Family Cemetery**



Construction Date: ca. 1900  
NW 1-7-18

Original Owner / Builder: William & Jane Patterson family

**20. Smith Family Cemetery** E 18-7-17



Est. 1883

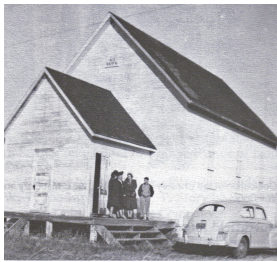
Original Owner / Builder: Rueben Smith Family

Features of Interest

On private land with public access

<http://www.mhs.mb.ca/docs/sites/minnewawacemetery.shtml>

**21. Chesley Methodist Church SW 24-7-18**



Sipiweske P 101 (Photo)



Chesley Methodist Church Cairn (2010)

Site Location (lat/long): N49.58391, W99.80252  
denoted by symbol on the map below

Historic Sites of Manitoba: Methven Cemetery (RM  
of Oakland)

“This cairn was erected in memory of the pioneer of  
Chesley district who built at this site, in the Rural  
Municipality of Oakland, a Methodist Church which  
operated from 1898 to 1955.”

Source: Historic Sites of Manitoba

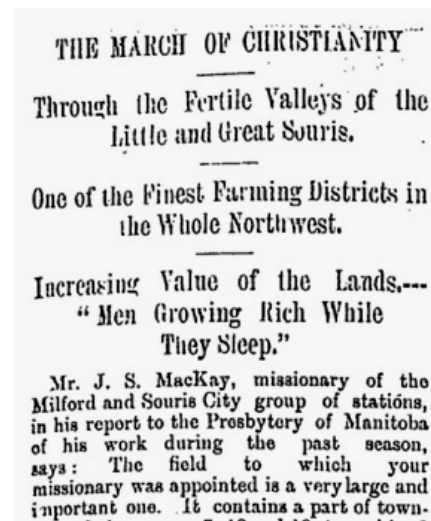
[http://www.mhs.mb.ca/docs/sites/methvencemetery.  
shtml](http://www.mhs.mb.ca/docs/sites/methvencemetery.shtml)

**22. Souris City Methodist and Presbyterian  
Services**

Thanks to a Winnipeg Daily Times report from  
September 25, 1882 we have a concise summary of  
how the place looked then. Mr. J.S. McKay,  
Presbyterian missionary to the area provides a  
detailed account of his region in which he refers to  
Souris City as, “a somewhat pretentious place”  
consisting of “ a saw and grist mill, two stores, hotel,  
five private residences, a blacksmith shop, and  
several tents.” He goes on to extol the agricultural  
potential of the region, to bemoan the fact that

although there were “ten Presbyterian families and  
about a dozen young men,” they were “very  
careless” about church attendance. He should be  
forgiven if he seems to regard the local Methodists  
with a somewhat jealous eye, as he notes that they  
are in the majority and that they “have service every  
day”. His services were conducted every fortnight  
in Mr. Harrison’s store, and appreciates that the  
storekeeper, a Methodist incidentally, made it  
available.

[http://www.virtualmanitoba.com/FalseStarts/Souris  
City/](http://www.virtualmanitoba.com/FalseStarts/SourisCity/)



The Winnipeg Daily Times, September 25, 1882

**23. Souris City Cemetery**

All that now remains of thle settlement is the Souris  
City Cemetery which is located on part of the SE of  
17-7-17 W.P.M. It is believed there were a dozen  
burials in the cemetery, however it has been very  
badly neglected and today all that can be found is  
one tombstone.