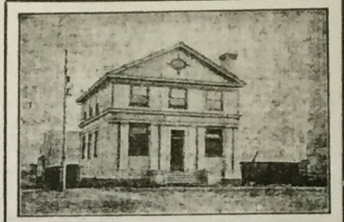
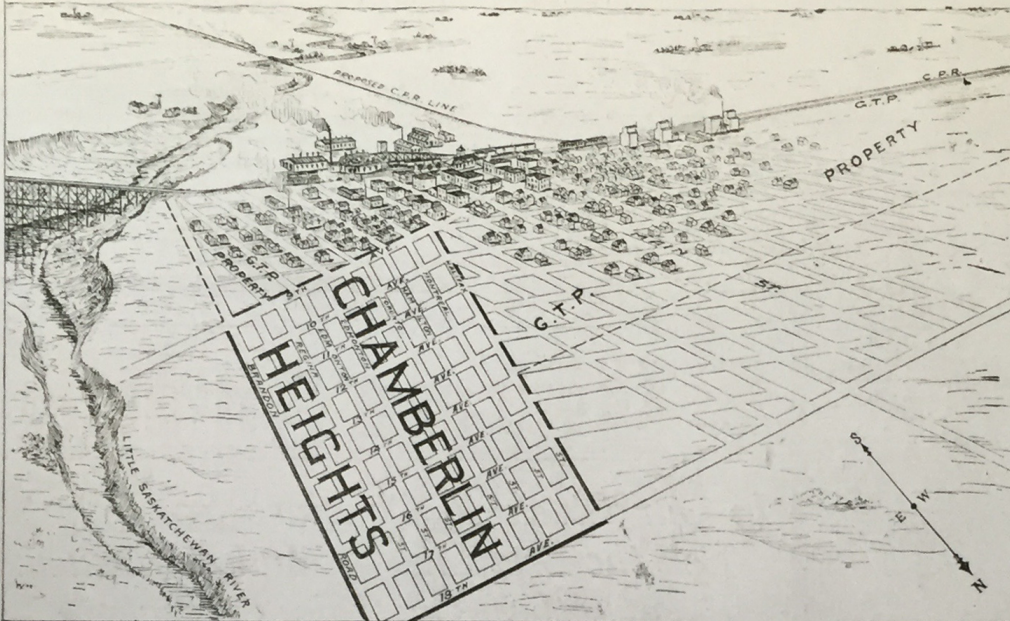


# LARGE EXTENSIONS ORDERED FOR THE G.T.P. RY. SHOPS AT RIVERS, MAN.



Branch Canadian Bank of Commerce, Rivers, Man.

## A FEW REASONS WHY YOU SHOULD PURCHASE LOTS IN CHAMBERLIN HEIGHTS

There is always a FIRST in all matters, and generally the first gets the best. We can't all be first, "BUT" we are first in sizing up the situation re Transcona Shops, not in operation, and the G.T.P. Shops now running full blast at RIVERS, Man., employing upward of 1,000 men. They have here already a full equipped blacksmith shop, machine shop, boiler shop, car shop, round house, freight shed and miles of trackage.

### NOT TRANSCONA BUT RIVERS

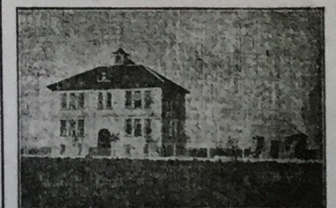
If it was the intention of the G.T.P. to transfer their employees from Rivers to Transcona, why are the G.T.P. calling for tenders for a large Hotel to be built at Rivers? You may depend upon it that they are not spending money in towns and cities before they size up situations as to the future prospects of a good return on their investments.

### INVEST IN CHAMBERLIN HEIGHTS

Then if RIVERS is safe enough for a large corporation like the G.T.P. Railway to invest thousands of dollars in, we can emphatically and conscientiously say that RIVERS has a great future and is a safe and sound investment for the general public to invest their money in.

The G.T.P. Co. know the future of RIVERS, when they are spending such large amounts in buildings, etc.

We therefore strongly recommend the purchasing of lots in Chamberlin Heights, Rivers, Man., as being a first-class investment. Especially at the low prices and easy terms which are now asked.



One of the Public Schools, Rivers, Man.

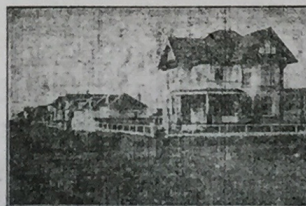
## WHERE IS CHAMBERLIN HEIGHTS

The Ideal Residential Subdivision?

IT IS situated 6 minutes' walk from the depot; it stands about 30 feet higher than the town, which gives it a most beautiful view of the Saskatchewan Valley lying about two miles to the south and east of RIVERS. It is the only first-class residential property in RIVERS, and will demand prices equal to its location in the very near future. A site has been offered the G.T.P. for their new hotel in CHAMBERLIN HEIGHTS; same is now under consideration.

### WHAT IS RIVERS?

RIVERS is a town of about 2,000 population, which is fast and surely advancing towards being the most important city on the G.T.P. west of Winnipeg. The refusal to take over the Transcona Shops to date by the G.T.P. and the large area of land owned by them at Rivers, together with



Residential District, Rivers, Man.

the new developments now going on at Rivers, make it a very easy problem to solve, and that Rivers will soon become a very important factor on the G.T.P. Railway.

Tenders for a trunk sewer and the grading of all streets in Chamberlin Heights are now called for.

\$5.00 will secure you a lot in CHAMBERLIN HEIGHTS. Price ranges from \$100 up.

### EXTENSIONS

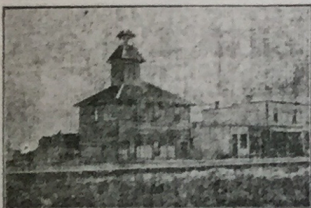
Machine shop extended 100 x 140 feet and all other departments to have all necessary improvements made and extended, same to be continued indefinitely.

### NEW HOTEL

Tenders have been called for recently by the G. T. P. Ry. for a large hotel to be built at Rivers.

### NEW ROLLING STOCK

Ordered for the Transcontinental Railway, 19 new locomotives and 9,000 cars.



Fire Hall, Rivers, Man.

# RIVERS REALTY CO

EXCLUSIVE AGENTS

306-307 Nanton Bldg.  
Winnipeg Phone M. 3905