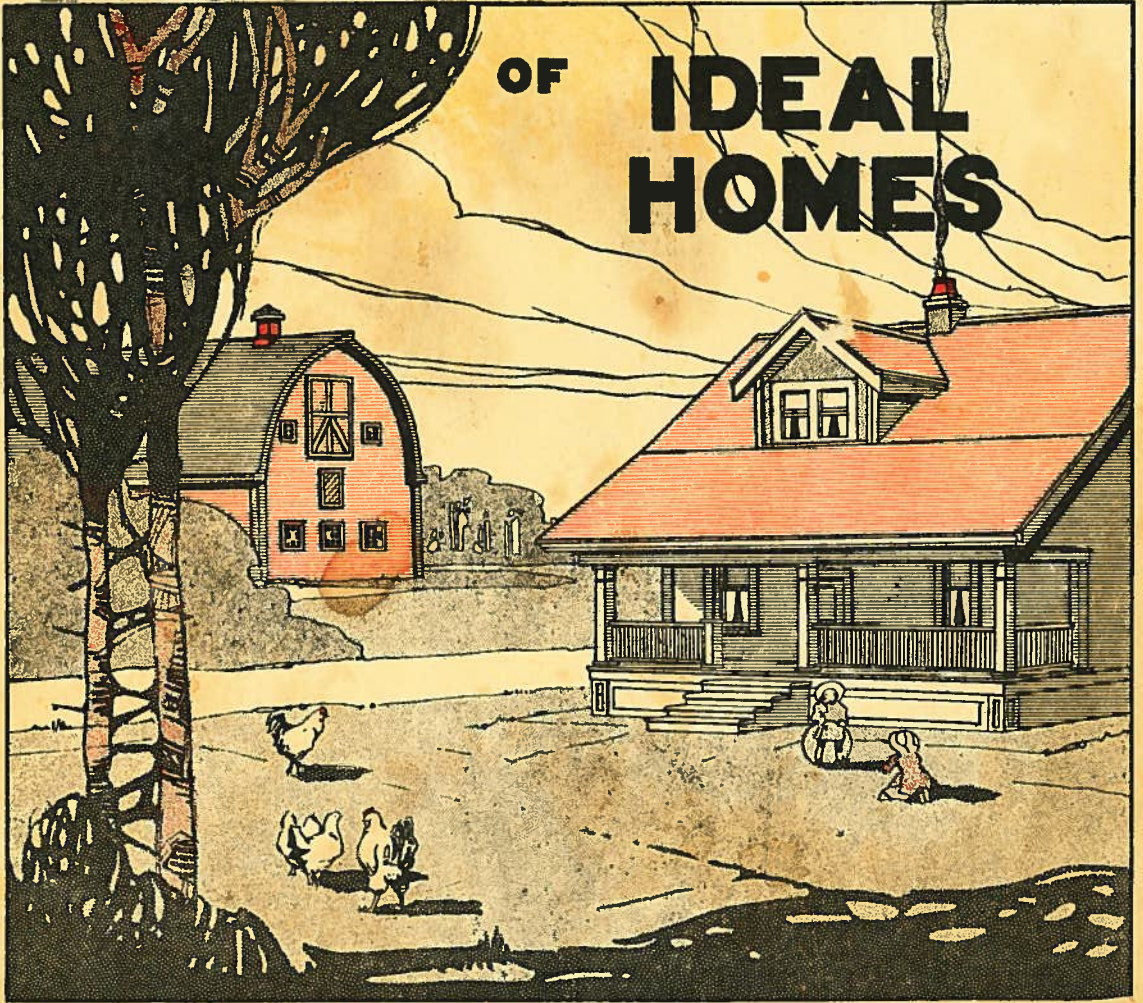


# PLAN BOOK

## OF IDEAL HOMES



**HOMES** designed for the **WEST**

**THE T. EATON CO** LIMITED  
WINNIPEG CANADA

# TO OUR CUSTOMERS

---

THE SPECIAL PURPOSE in presenting this Plan Book is to simplify the problem of home building for our customers. There are a number of designs that will be found adaptable to any community.

In selecting the design of a house there are a number of points that should be taken into consideration. The location of the house is a very important feature, it should be so placed that the grounds and other surroundings contribute to the unity and harmony of the entire design. Often this point is overlooked and an otherwise attractive house is marred in its effect by being out of harmony with the surroundings.

THE PROBLEM OF BUILDING A HOUSE only comes to most once in their lifetime, and no greater calamity in a material way may befall an owner than to discover, when the building is completed, that some arrangement or the appearance is not suitable. This often proves to be the case when houses are built without carefully prepared plans.

Never attempt to build without proper plans to work from.

Here are some of the things that happen to the man who attempts to build without the necessary plans. He wastes material and his workmen lose time. Both of these items entail greater expense and endless worry over mistakes, and, furthermore, when the house is completed it lacks style.

IN THE PREPARATION OF THE PLAN BOOK great care has been exercised in the selection of the designs, and special effort has been made to provide for the most economical construction throughout, thereby giving the home builder the benefit of a considerable saving both in time and cost of materials.

We have studied economy in construction, and our knowledge of all the material that enters into a house qualifies us to give you the best for your money.

AFTER GIVING THE DESIGNS shown in this book careful study, select your choice and write us for quotation on the material needed for building, and we will forward you a guaranteed price on the lumber and millwork delivered to your station.

THE **T. EATON CO.** LIMITED  
WINNIPEG CANADA

3500

## EATON HOUSE PLANS

All our plans have been prepared by men who have had many years' experience in designing both city and country homes and who are familiar with the conditions and requirements of the Western Home Builder.

Our idea of producing these plans is to enable our customers to build with the utmost economy and at the same time secure the most artistic effects in design and the greatest conveniences in the arrangement of their homes. By building from our plans and taking advantage of the very low prices at which we supply the material, you can make a substantial saving on the cost of your building.

## EATON BARN PLANS

The layout and general arrangements of our Barns and other farm buildings is based on the experience of a number of the most successful farmers and stock raisers in the West, as well as being submitted and passed on by experts from our agricultural colleges and experimental farms. Our plans can be relied on to contain the latest and best ideas of arrangement and equipment.

## EVERY PLAN IS PRACTICAL

Every plan in this book is guaranteed to be thoroughly practical and economical in construction, the material being used to the very best advantage.

## CORRECT PLANS SAVE ERRORS

You should have proper working drawings before starting to build, have everything understood and put on paper, then your carpenter will know exactly what he has to do and can give you a contract price. There will be no extras or disputes, and in this way you are safe from serious and costly mistakes.

## OUR FREE PLAN OFFER

Send us one dollar for complete set of working blue prints of any of the designs shown in this plan book, which consists of basement, first and second floor plans, front, rear and two side elevations, wall section, also a specification covering every important detail in the construction, for the guidance of different trades connected with the building.

Upon receipt of the order for lumber and millwork for any building shown in this book, we will refund the dollar paid for our working plans and furnish a bill of material showing the location and kind allowed for the construction; hence you get a full set of architect's plans, which are worth from \$25.00 to \$75.00, free of all cost.

---

## SPECIAL PLANS

If you have any design which you prefer to those shown in this Plan Book or wish for any features not to be found in our stock plans, send us your own sketches or write for our Special Plan Sheets, sketch your design on this sheet and fill in the specifications. We will quote you a contract price on the material, and upon receipt of your order for the Lumber and Millwork we will provide you with a set of Blue Print Working Drawings.

110.00 - 47506/224  
100 Plans - 225  
125 - 150  
225

# EATON LUMBER

## Direct from Mill to You



Fir Dimension, Boards, Shiplap, Siding, Ceiling,  
Flooring, Finishing, Mouldings, Lath and Shingles.

CAR LOTS 22M TO 26M FEET

### A FEW WORDS ABOUT LUMBER

Coast fir, generally known among lumber men as Douglas or soft yellow fir, is the best known and most important of the British Columbia woods. Its handsome, distinctive grain is universally admired, and when properly finished it rivals many of the noted hardwoods. Its hardness and ease of working, combined with durability and strength which have made it famous for structural purposes, are qualifications found in no other wood that can be procured for the same money. The common grades make excellent framing lumber and rough boarding, and the clear grades when selected for its flat or slash grain makes a very attractive interior finish.

This wood naturally lends itself to a variety of attractive styles and colors, and can be made to harmonize with almost any kind of decoration. Many beautiful effects can be obtained and the grain brought out more prominently on this wood by the use of stains.

### WHY OUR PRICES ARE LOW

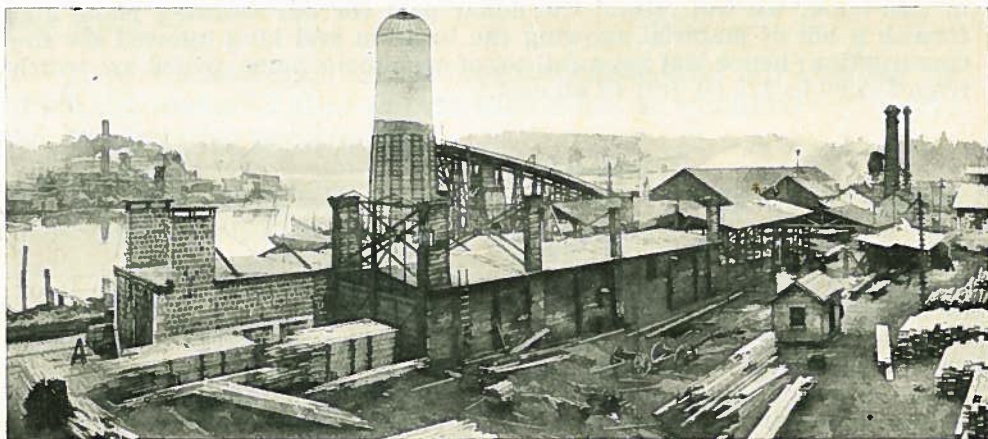
By placing large orders and paying cash for our lumber we get rock-bottom prices. The lumber is taken from the racks or piles, and loaded into the car that goes direct to your station, so that there is no expense in handling your order, no commissions, no yard rents, and no collections that must otherwise be added to the price of the material. We add one small profit, and the result is that you can buy lumber from us at practically the same price as the wholesaler pays the mills. The saving will go a long way in paying the contractor for his work.

### MANUFACTURE

The mills from which we get our lumber are equipped with the very latest machinery for the manufacture of all kinds of building lumber. Extensive dry kilns of the very latest type have been installed at great expense. All finishing lumber is thoroughly dried before being manufactured; this insures a smooth, clean finish that is suitable for either stain or varnish.

### QUALITY

The strictest attention is given to the grading of our lumber, both as regards the lumber itself and the smoothness of the finish. There are no "ifs" or "buts" in our guarantee. Every piece will be up to standard.



# EATON MILLWORK

## From Factory to Consumer

---

### Building Material of the Highest Quality at Wholesale Prices

In our large General Catalogue you will find a full line of millwork designs from which we have selected all the doors and windows for the plans shown in this book. Every article is guaranteed to be exactly as illustrated and described, will be found to be good, honest value for the price asked, and will give you the satisfaction and service you have a right to expect. The material used in the manufacture of our millwork is of the very highest quality and is thoroughly kiln dried and carefully manufactured.

### WE GIVE YOU GOOD SERVICE

We have every modern facility to aid the economical handling of our goods. Articles listed are kept in stock, so that your order can be assembled, crated and ready for shipment with the least possible delay. There are no delays or breakage caused by unnecessary handling, our high speed auto trucks take all shipments from the factory packing room direct to the freight sheds.

### SAFE DELIVERY

Goods are carefully packed, and we guarantee safe delivery anywhere. If goods reach your destination in damaged condition, all you need to do is to send us your freight receipt with agent's notation, stating condition of goods on arrival at destination. We will make good the damage.

### EATON WALL BOARD

Any design shown in this book can be finished with wall board. In many localities the convenience and ease of handling makes the use of wall board the best and most desirable method of finishing the interior of any home.

For the convenience of our customers we will furnish free upon receipt of order for materials a full set of blue prints showing panel arrangements of every room for any of our standard designs. Write for samples of wall board, sent free upon request.



# SPECIFICATIONS OF MATERIAL FURNISHED FOR OUR DESIGNS

**FRAMING**—All framing material of No. 1 Common Fir Dimension spaced on 16 inch centres, excepting where otherwise marked on plans; to be of the correct lengths to work in most economically for purpose intended.

**SHEATHING**—For the sub floor, inside and outside wall sheathing and roof boards we furnish 8 inch or 10 inch No. 1 Fir Shiplap; sub flooring of sufficient quantity to cover the main floor only.

**SIDING**—We figure in all cases where siding is used on our house plans to use 1x4 inch No. 1 Fir Novelty Siding. This is the most suitable kind for Western conditions, but we can furnish any siding desired upon request.

**SHINGLES**—No. 1 XXX B.C. Red Cedar Shingles; the quantity we furnish being sufficient to lay 4½ inches to the weather on the roof and 5½ inches to the weather on all wall surfaces where called for on plans.

**EXTERIOR FINISH**—We furnish all corner boards, weather board, cornice and other exterior finishing of No. 1 Clear Fir Stock, surfaced four sides. Porch ceilings and wide cornice soffits in 5/8x4 inch No. 1 Fir V-jointed ceiling.

**LATH**—The lath we furnish are No. 1 Fir Lath.

**FLOORING**—For flooring on all porches and main floor we furnish 1x4 No. 1 E.G. Fir Flooring, 3¼ inch face measure. On the second floor 1x4 No. 3 Fir Flooring. Maple, Plain or Quarter Sawn Oak Flooring can be furnished for any room when desired.

**FRAMES**—We furnish material for all frames in long lengths, machined ready to cut up. Outside door frames of 2x8 stock rabbeted for doors. Window jamb of 1 inch stock plowed for sash. All with ¾x4¼ outside casings. Basement and sash frames made from 2 inch stock.

**VERANDA, ETC.**—Veranda posts to be built up of 1 inch material finished with mould at cap and base. All balustrades as shown on plans. We furnish all crown, bed, cove, lattice and necessary mouldings of standard patterns that are required for the completion of the building.

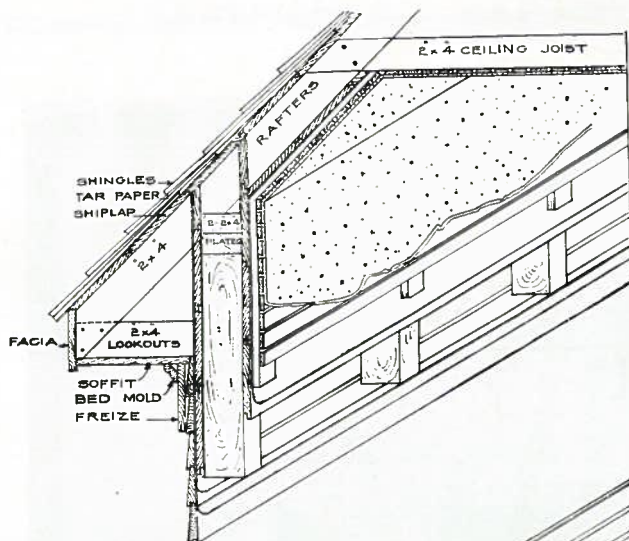
**DOORS AND SASH**—Oriel windows, where shown on plans, are 1¾ inch thick, all others to be 1¾ inch check rail windows furnished in stock sizes. The outside front and rear door to be glazed of design and size as shown on plan, both 1¾ inch thick. All inside doors of sizes shown on plan of 1¾ inch thickness, five cross panel Clear Fir.

**INTERIOR TRIM**—Material for all trim is furnished of No. 1 Clear Fir Stock of the bull nosed or round edge pattern, with door and window frames finished with the three member cap trim. All the necessary door and window casings, baseboard, base blocks, cap moulding, door and window stops, chair rail and picture moulding furnished in Clear Fir suitable for stain or natural wood finish.

**STAIRS**—We will furnish wall strings, treads and risers, newels, rail and balusters to complete the stairs as shown on plans.

Owing to the fluctuation of prices we have not published any costs in this plan book. Our Home Building Department will gladly furnish upon request an estimate on any material and equipment desired. All inquiries are answered promptly, suggestions and prices being given without any charge or obligation. Mill work, hardware, metal work and other builders' requirements are listed in our General Catalogue.

# EATON HOUSE CONSTRUCTION



This interesting diagram shows very clearly the construction we use on the main floor, outside walls and roof on any of our plans.

Main floor joists are laid on a wall plate and the ends closed in with shiplap, the concrete is then poured in around the ends, making the wall solid up to the floor. The sub floor is shiplap, and over this is laid a thickness of heavy fibre sheathing with a finished floor of No. 1 E.G. fir flooring.

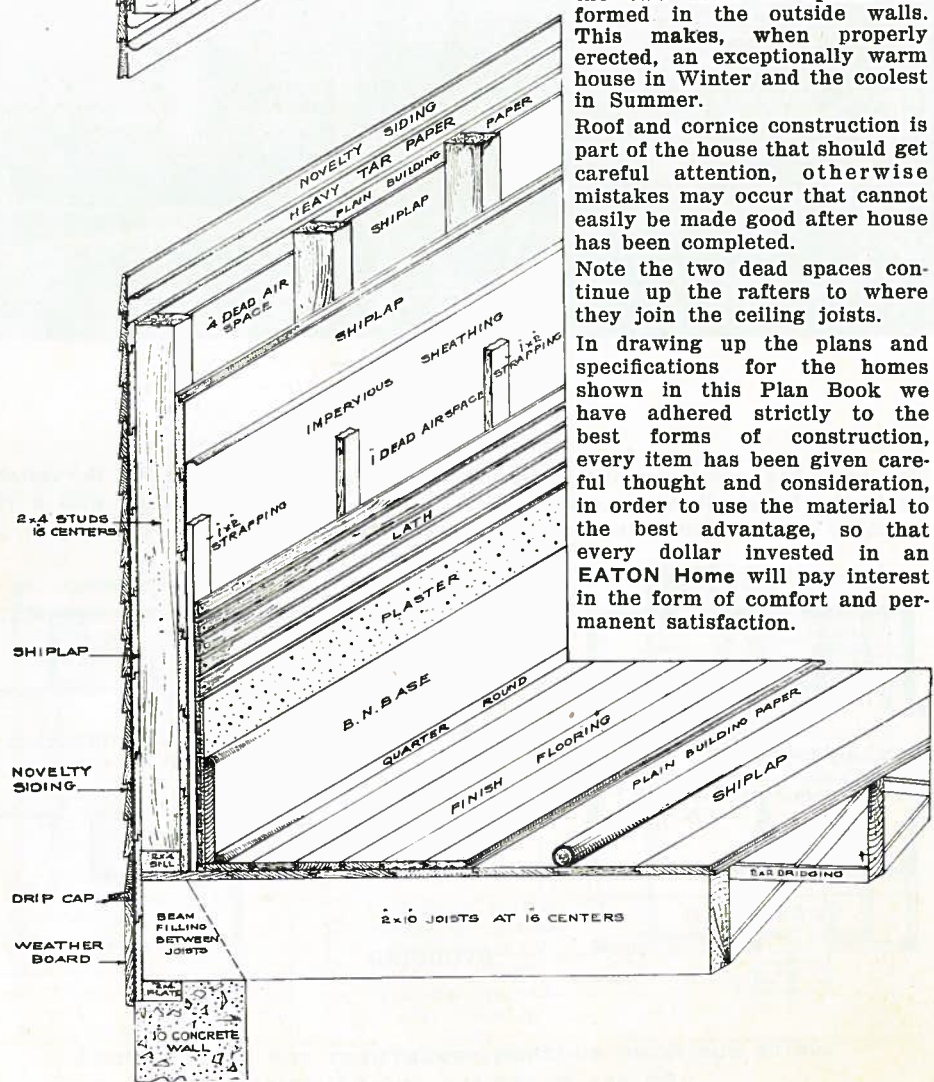
**NOTE**—We figure on No. 3 Flooring without sub floor on second story in all cases.

This diagram clearly shows how the two dead air spaces are formed in the outside walls. This makes, when properly erected, an exceptionally warm house in Winter and the coolest in Summer.

Roof and cornice construction is part of the house that should get careful attention, otherwise mistakes may occur that cannot easily be made good after house has been completed.

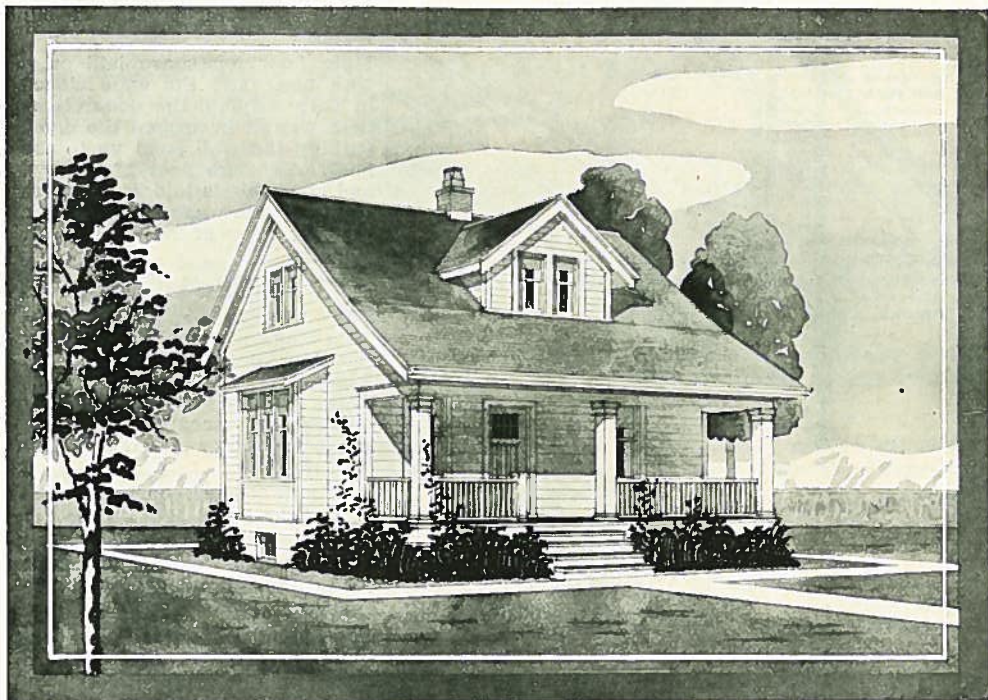
Note the two dead spaces continue up the rafters to where they join the ceiling joists.

In drawing up the plans and specifications for the homes shown in this Plan Book we have adhered strictly to the best forms of construction, every item has been given careful thought and consideration, in order to use the material to the best advantage, so that every dollar invested in an EATON Home will pay interest in the form of comfort and permanent satisfaction.





# IDEAL HOMES

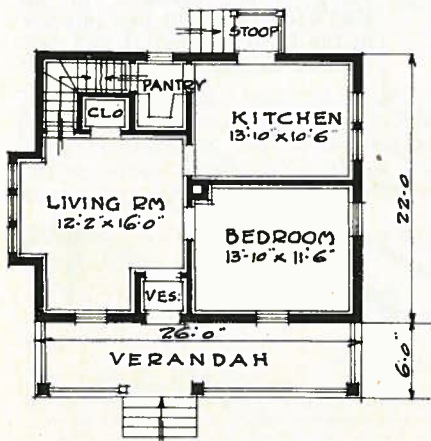


## EATONCOURT

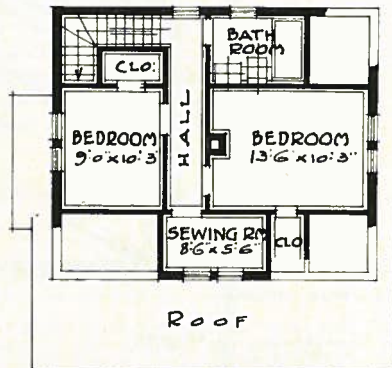
EATON PLAN BOOK

E10

This home has proved one of the most popular designs we have supplied the material for in the Prairie Provinces. Economical to build, simple construction with a very desirable layout of floor plans, makes this house a great favorite.



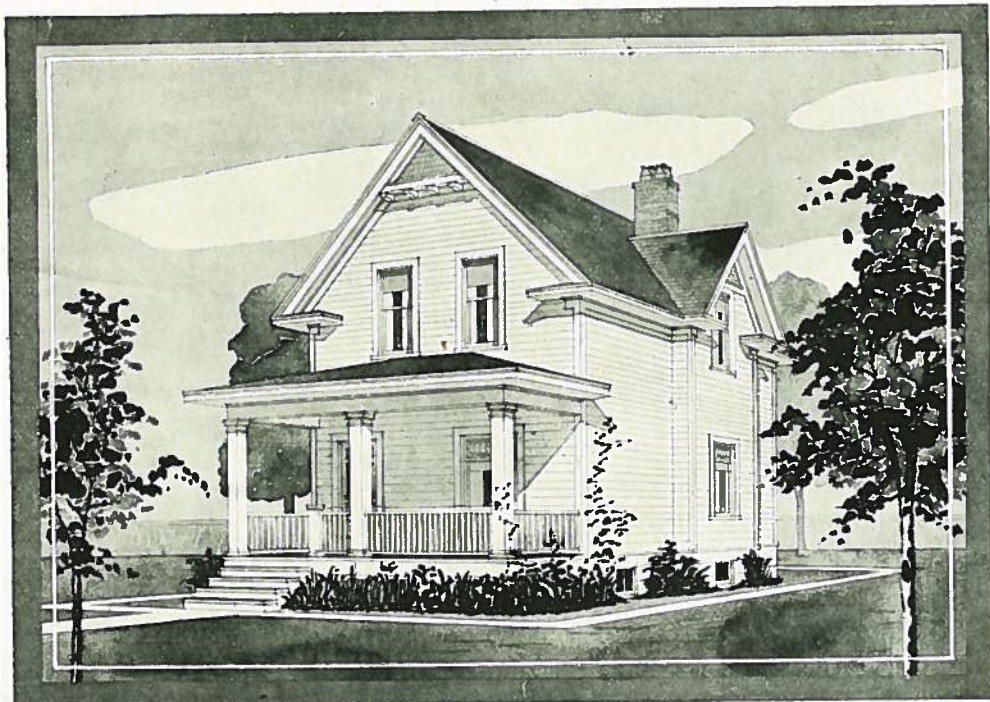
FIVE  
ROOMS  
AND  
BATH  
  
DIMEN-  
SIONS  
26 x 22  
  
12 FT.  
STUDDING



WRITE OUR HOME BUILDING DEPARTMENT FOR LATEST PRICES  
ON ALL MATERIALS AND EQUIPMENT



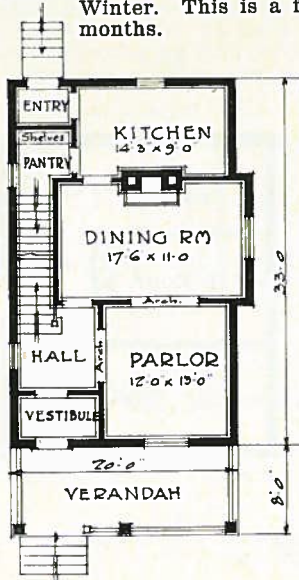
# IDEAL HOMES



## EALING

EATON PLAN BOOK  
E11

This design is a good example of a home of moderate cost. The veranda extends the full width across the front, and the two windows in the gable gives this house a neat appearance. Front door opens into vestibule, protecting the hall from the cold in winter. This is a feature of more than passing interest during our winter months.



SIX ROOMS  
AND BATH

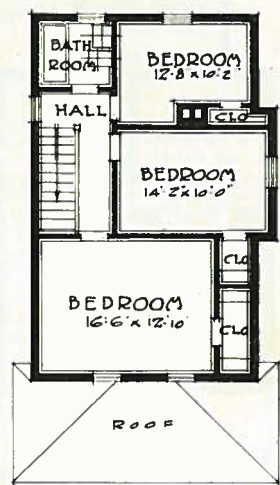
DIMENSIONS

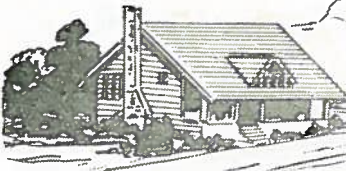
20 x 33

14 FT.

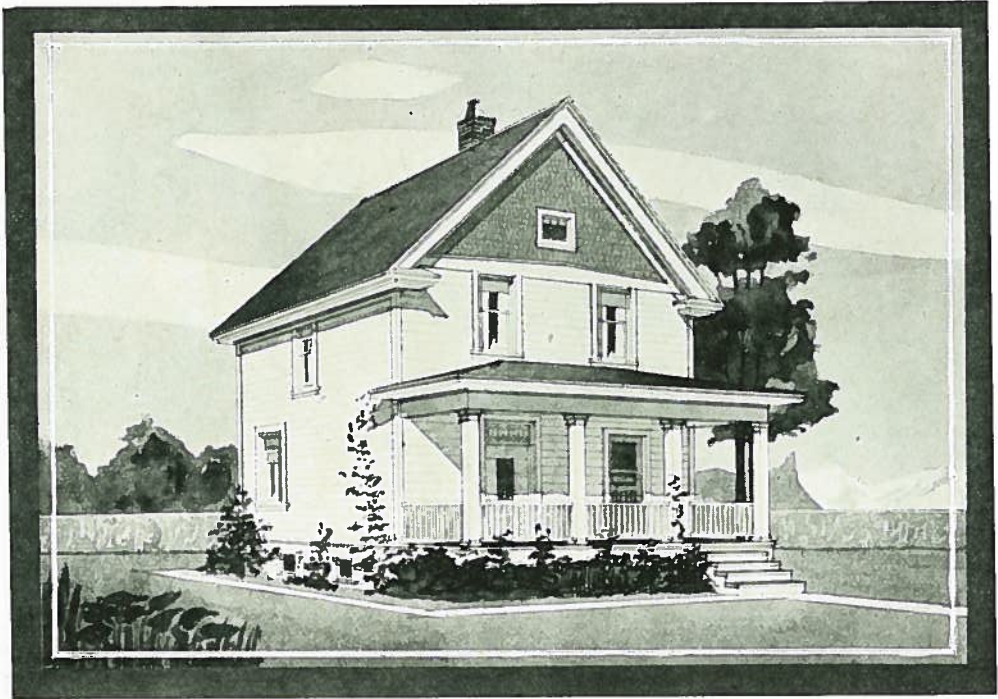
STUDDING

WRITE OUR  
HOME BUILDING  
DEPARTMENT  
FOR LATEST  
PRICES ON ALL  
MATERIALS  
AND  
EQUIPMENT



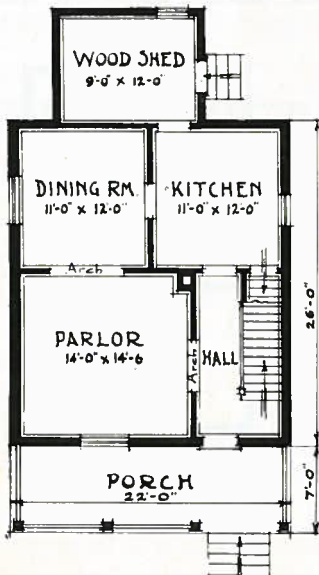


# IDEAL HOMES



## EARLSWOOD EATON PLAN BOOK E12

The front view of this house, whilst presenting no special features, is one of pleasing and attractive appearance. Provision has been made for good sized parlor and dining room on first floor, and three bedrooms with commodious closets on the second floor, with all available space being made use of.



SIX ROOMS

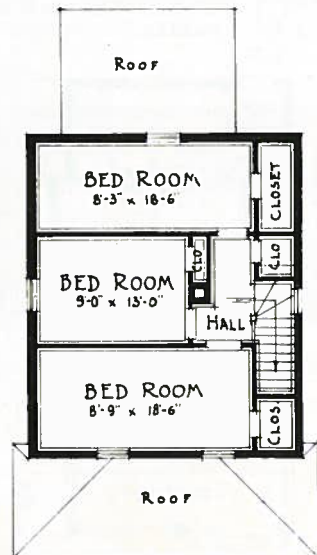
DIMENSIONS

22 x 26

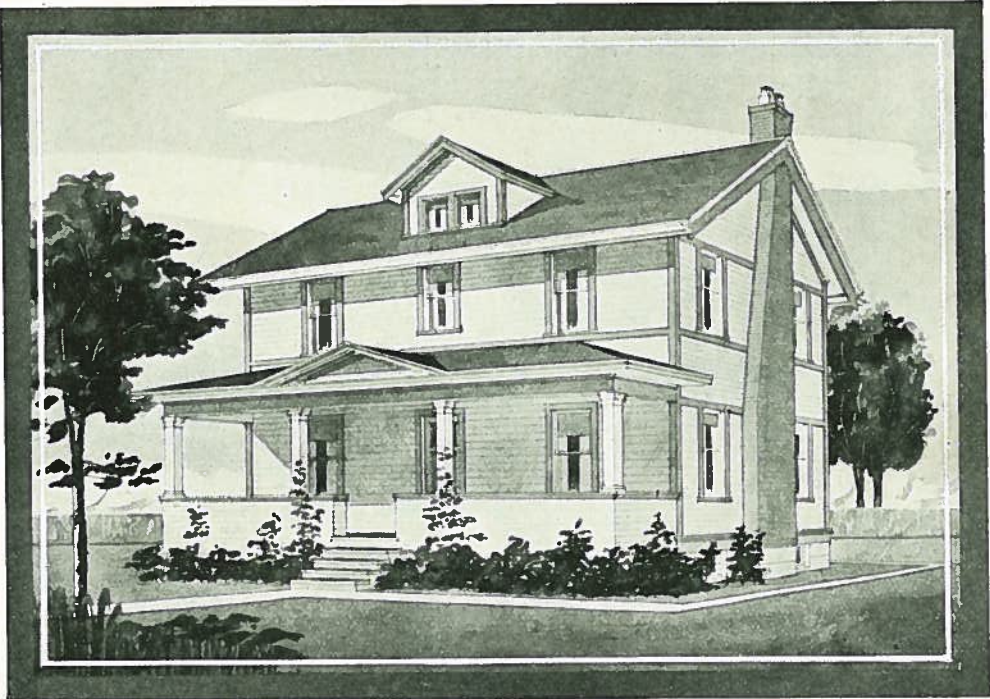
16 FT.

STUDDING

WRITE OUR  
HOME BUILDING  
DEPARTMENT  
FOR LATEST  
PRICES ON ALL  
MATERIALS  
AND  
EQUIPMENT



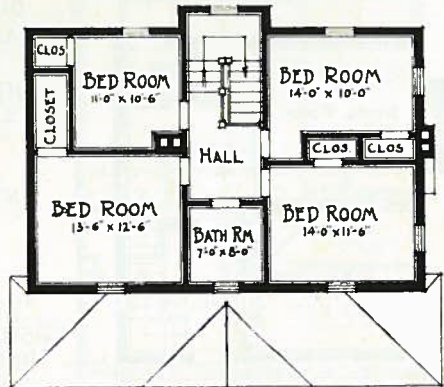
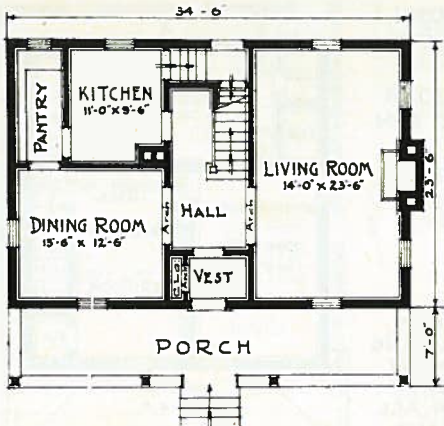
# IDEAL HOMES



## EAGLEHOLM EATON PLAN BOOK E13

Viewed from the front this house has the appearance of a large and pretentious home with the veranda across the entire front, but it is really only of moderate size. Another noteworthy feature is the ease with which the living room and bedrooms above may be enclosed and left to be completed at a later date. Alterations and additions are usually expensive, but here we have an opportunity, by closing up three door openings, of entirely shutting off that portion of the house until such times that it can be finished.

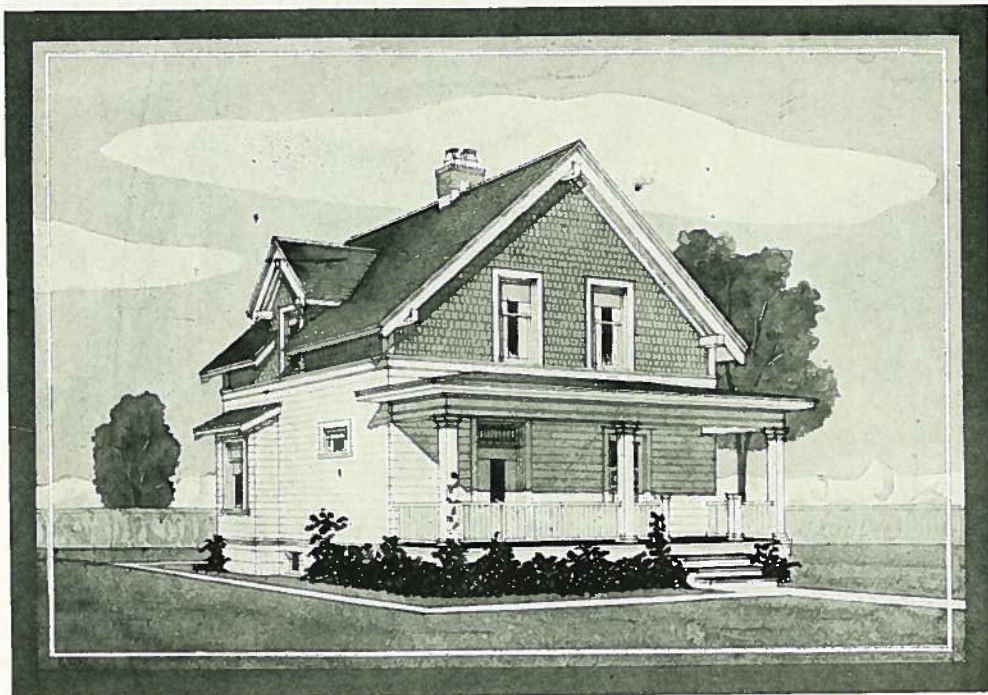
SEVEN ROOMS AND BATH. DIMENSIONS 34 x 24; 18 FT. STUDDING



WRITE OUR HOME BUILDING DEPARTMENT FOR LATEST PRICES  
ON ALL MATERIALS AND EQUIPMENT



# IDEAL HOMES

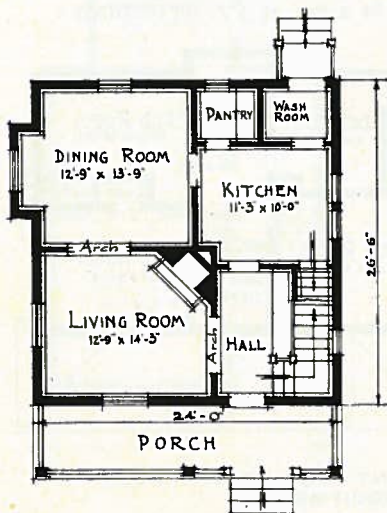


## EADWIN

EATON PLAN BOOK

E14

This charming little home was originally designed for one of our customers and has proved very popular. There is no special feature in the design that should get special mention, because everything that goes to make up the whole effect is worthy of note. To describe it best is to say that it is both artistic and practical.

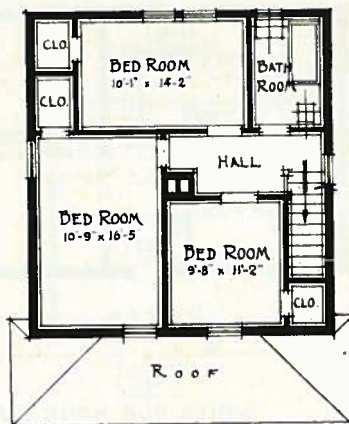


SIX ROOMS  
AND BATH

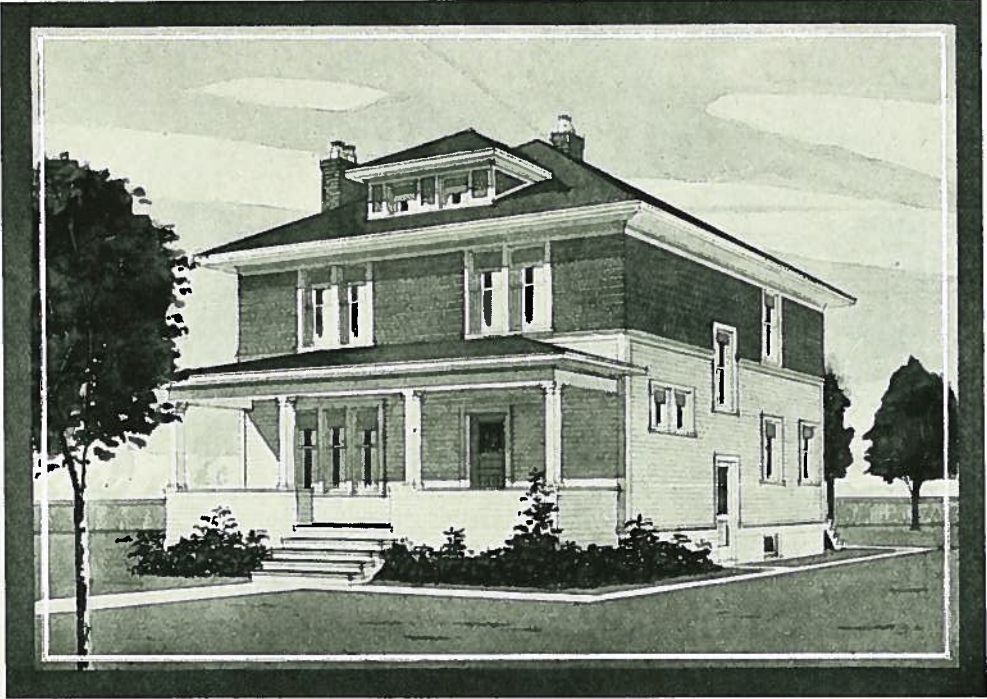
DIMENSIONS  
24 x 26 FT. 6 IN.

14 FT.  
STUDDING

WRITE OUR  
HOME BUILDING  
DEPARTMENT  
FOR LATEST  
PRICES ON ALL  
MATERIALS  
AND  
EQUIPMENT

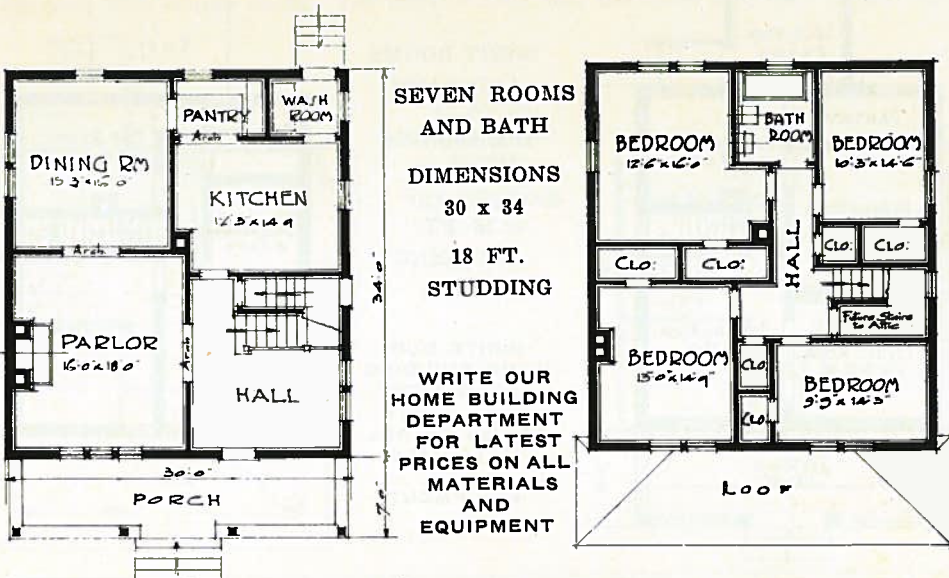


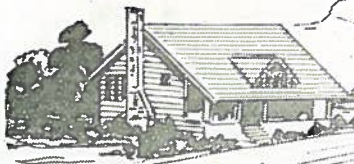
# IDEAL HOMES



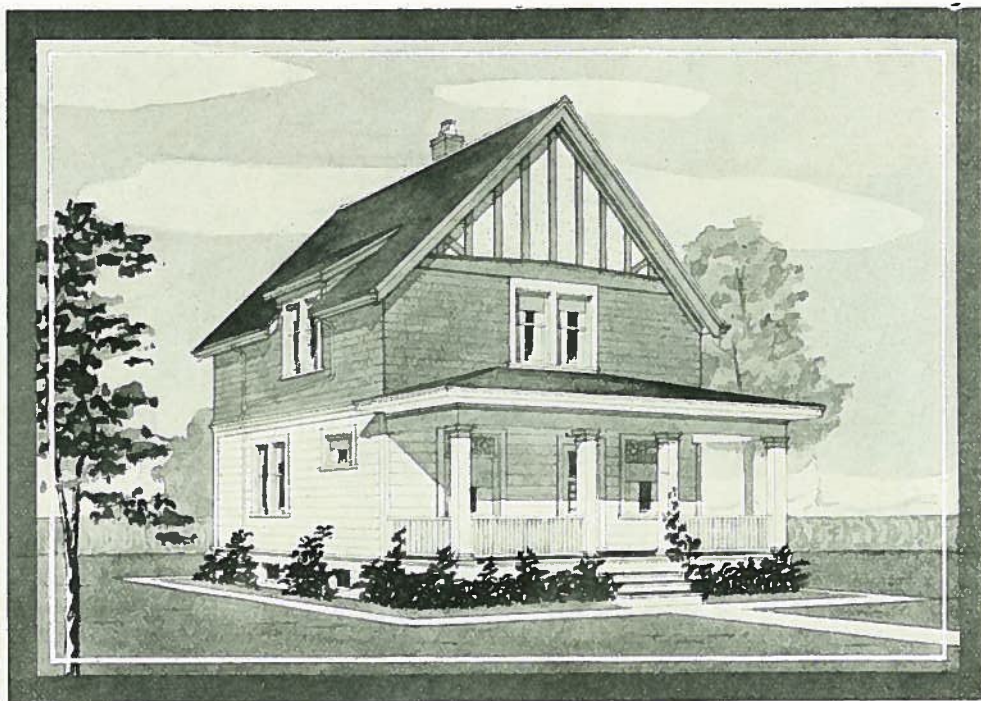
## EASTBOURNE EATON PLAN BOOK E15

An exceptionally well planned home of the modern type of square house, which is the one type where you obtain the maximum of space at the minimum of cost of both material and labor. The treatment of the lower walls with siding and the upper walls with shingles produces a pleasing and well balanced effect.





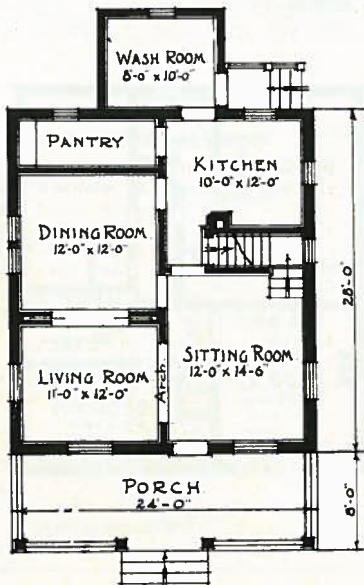
# IDEAL HOMES



## EASTRAY

EATON PLAN BOOK  
E16

A low priced, medium sized house of attractive and simple lines, which meets the requirements of the average Western Canadian farmer. Dining room is arranged so that it may be closed off from parlor with sliding doors. Basement easily accessible from the kitchen.

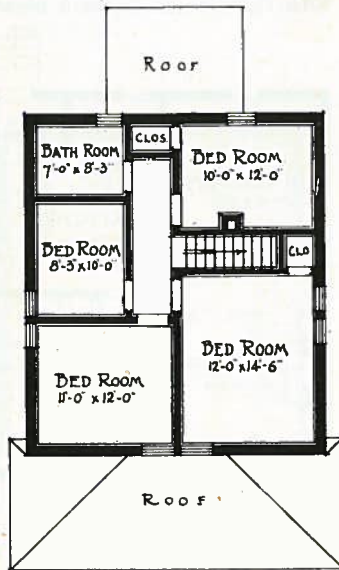


EIGHT ROOMS  
AND BATH

DIMENSIONS  
24 x 28

16 FT.  
STUDDING

WRITE OUR  
HOME BUILDING  
DEPARTMENT  
FOR LATEST  
PRICES ON ALL  
MATERIALS  
AND  
EQUIPMENT



# IDEAL HOMES

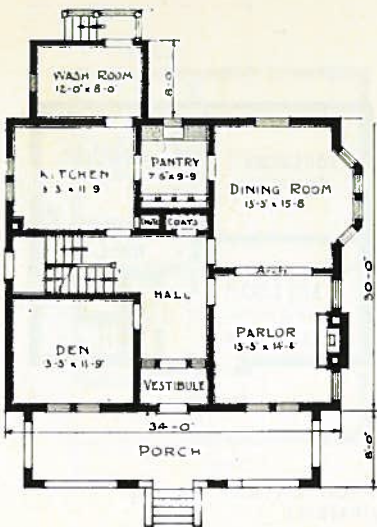


## EARLSCOURT

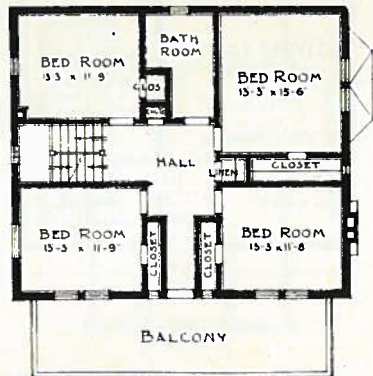
EATON PLAN BOOK

E17

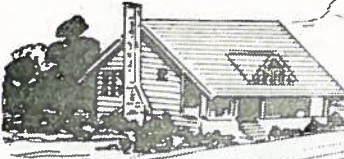
A square house is the most economical kind to build. You will notice from the plans the generous floor space of this house. The parlor and dining room separated only with an arch makes an attractive feature of the interior arrangement; the rooms are large and well lighted. On the second floor are four splendid bedrooms each equipped with clothes closet. The third or attic floor has three bedrooms of good size.



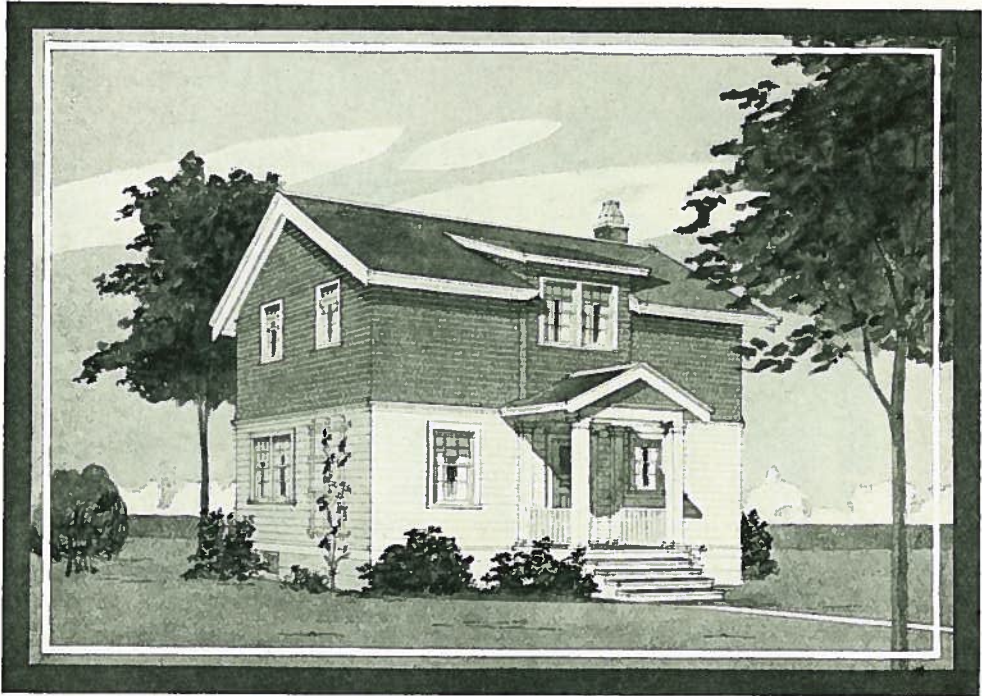
ELEVEN  
ROOMS AND  
BATH  
DIMENSIONS  
34 x 30  
18 FT.  
STUDDING



WRITE OUR  
HOME BUILDING  
DEPARTMENT  
FOR LATEST  
PRICES ON ALL  
MATERIALS  
AND  
EQUIPMENT



# IDEAL HOMES

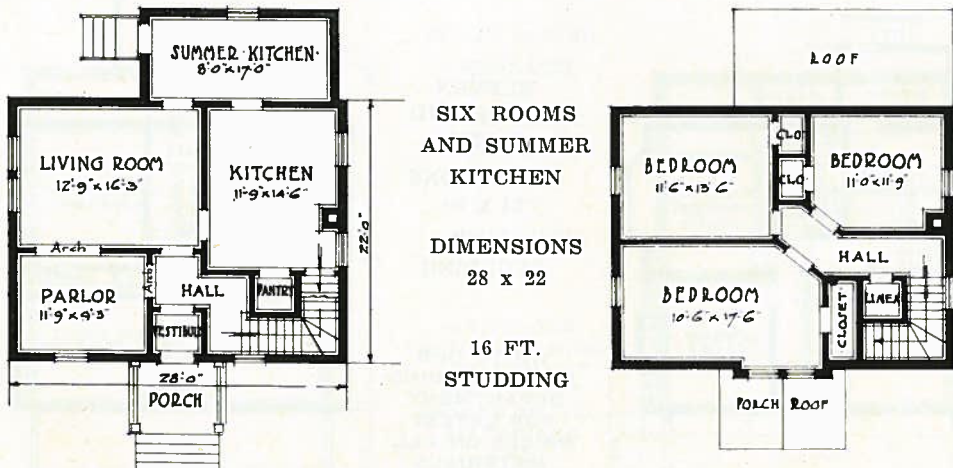


## EASTLEIGH

EATON PLAN BOOK

E18

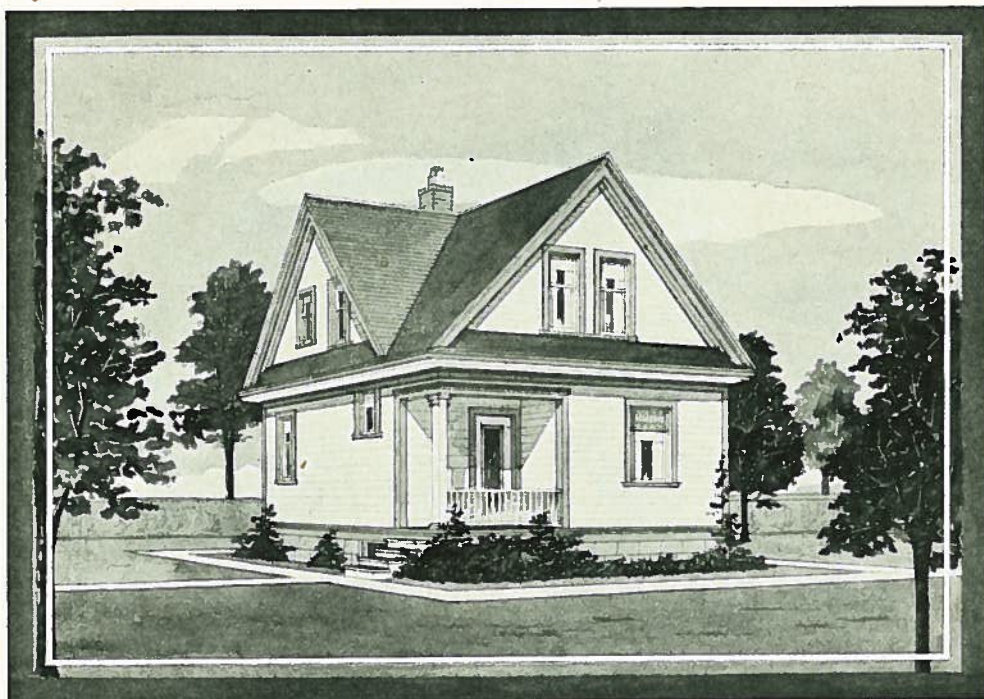
A home of the Dutch Colonial type of architecture that is somewhat different to the average dwelling. The first story walls being covered with siding and the upper walls and gables being shingled, affords an opportunity for a very artistic and attractive color scheme in exterior decoration.



WRITE OUR HOME BUILDING DEPARTMENT FOR LATEST PRICES ON ALL MATERIALS AND EQUIPMENT



# IDEAL HOMES

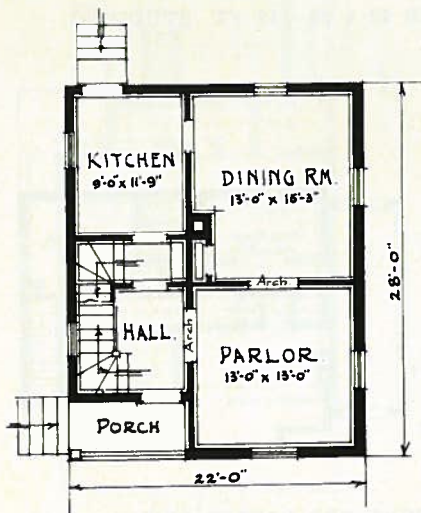


## EASTBROOK

EATON PLAN BOOK

E19

For its size and the cost of its construction, there is hardly any better plan conceived than this one. The interior arrangement is very simple, with the basement stairs leading off from the kitchen and all the bedrooms upstairs are within easy reach of the bath room.

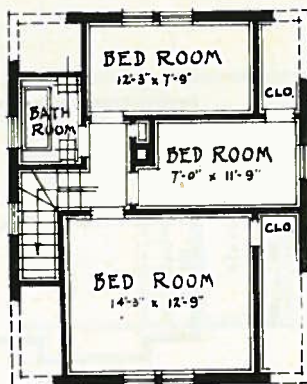


SIX ROOMS  
AND BATH

DIMENSIONS  
22 x 28

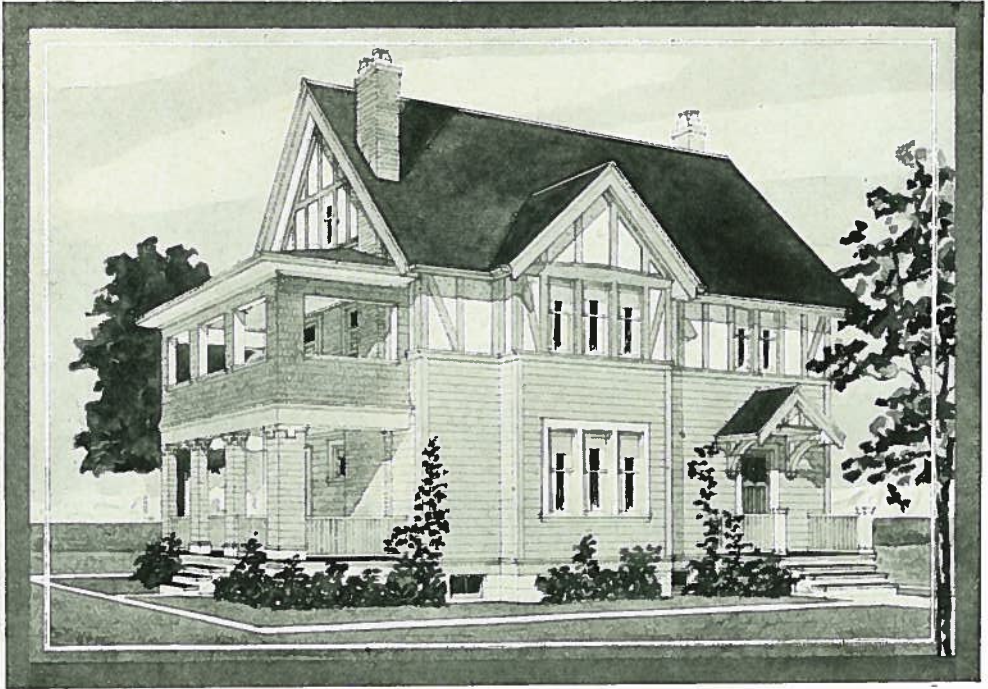
12 FT.  
STUDDING

WRITE OUR  
HOME BUILDING  
DEPARTMENT  
FOR LATEST  
PRICES ON ALL  
MATERIALS  
AND  
EQUIPMENT





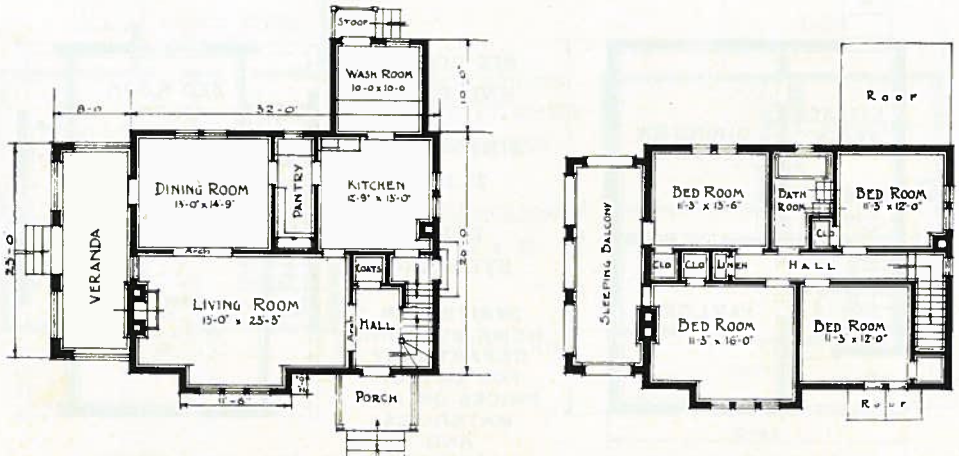
# IDEAL HOMES



**EARDSLEY**  
EATON PLAN BOOK  
E20

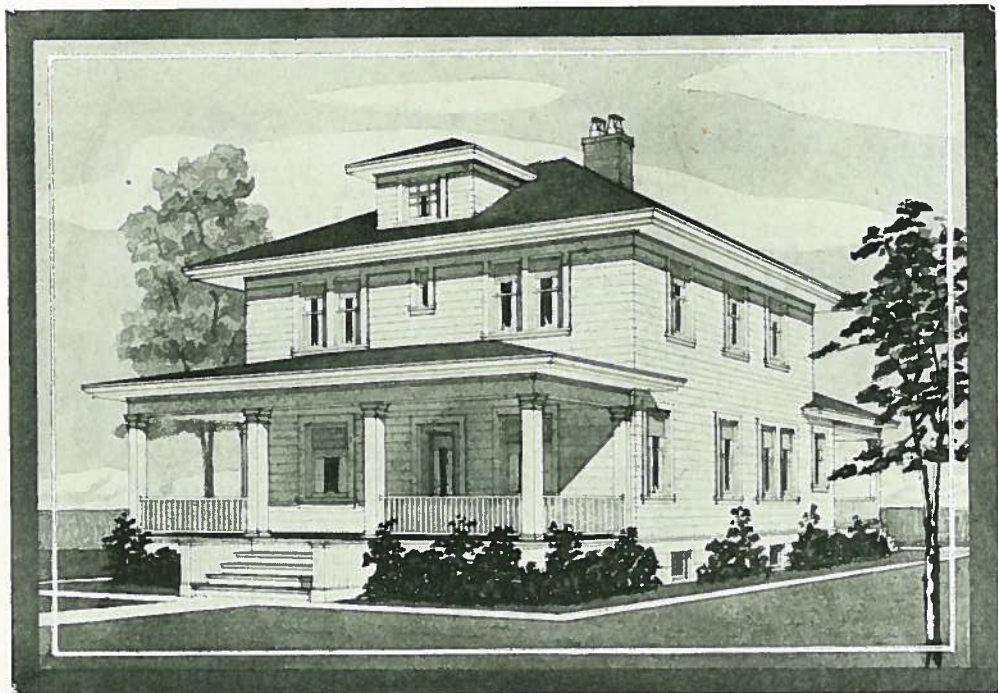
The cheery living-room with the bay window is but one of the attractions of this house. Elegance is combined with convenience. This home can also be built with shingles instead of stucco on the upper walls and gables if so desired.

SEVEN ROOMS AND BATH. DIMENSIONS 32 x 26. 18 FT. STUDDING



WRITE OUR HOME BUILDING DEPARTMENT FOR LATEST PRICES  
ON ALL MATERIALS AND EQUIPMENT

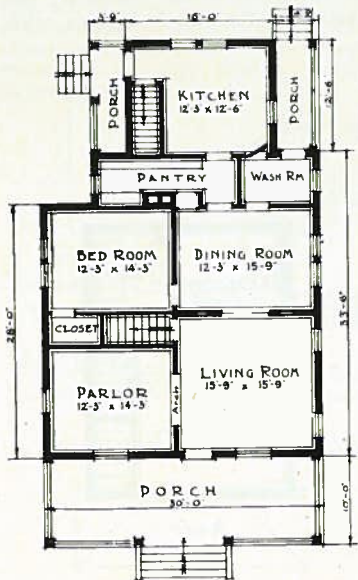
# IDEAL HOMES



## EAGER

EATON PLAN BOOK  
E21

An excellent plan of the square type. A design of unusual convenience in its layout of rooms, and one in which we have utilized to good advantage all available space. Stairs are provided leading to attic, which is unfinished.



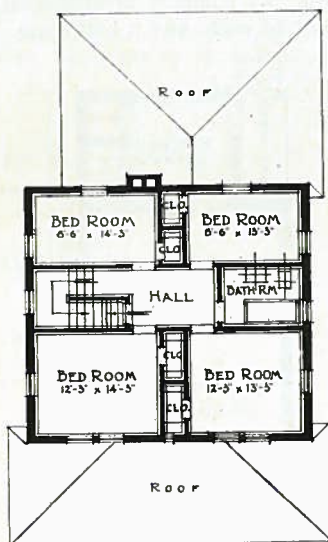
NINE ROOMS  
AND BATH

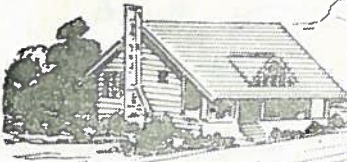
DIMENSIONS  
30 x 28

18 FT.  
STUDDING

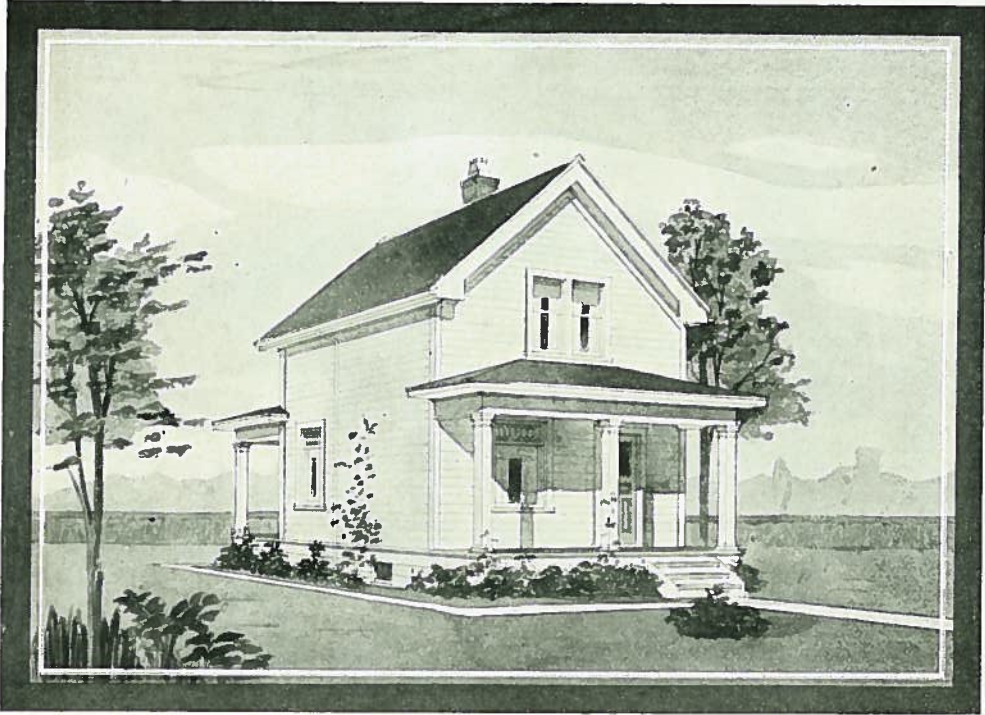
PANTRY AND  
KITCHEN  
ADDITION

WRITE OUR  
HOME BUILDING  
DEPARTMENT  
FOR LATEST  
PRICES ON ALL  
MATERIALS  
AND  
EQUIPMENT





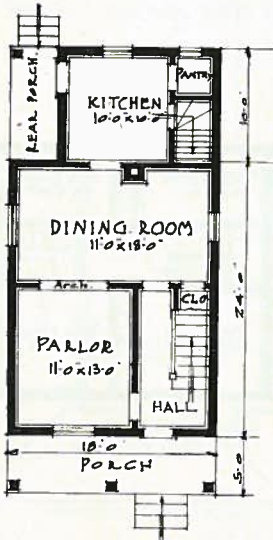
# IDEAL HOMES



## EARLTONVILLE

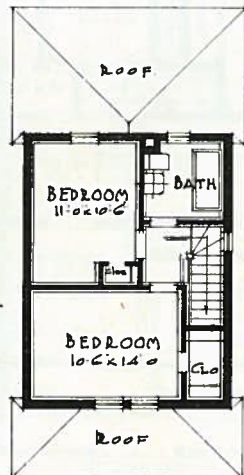
EATON PLAN BOOK  
E22

An admirable five room house, splendidly suited to the family which does not require a large or more pretentious dwelling. A comfortable home in every sense of the word. By compact arrangement the second floor plan provides for two bedrooms with closet to each, and a bathroom.

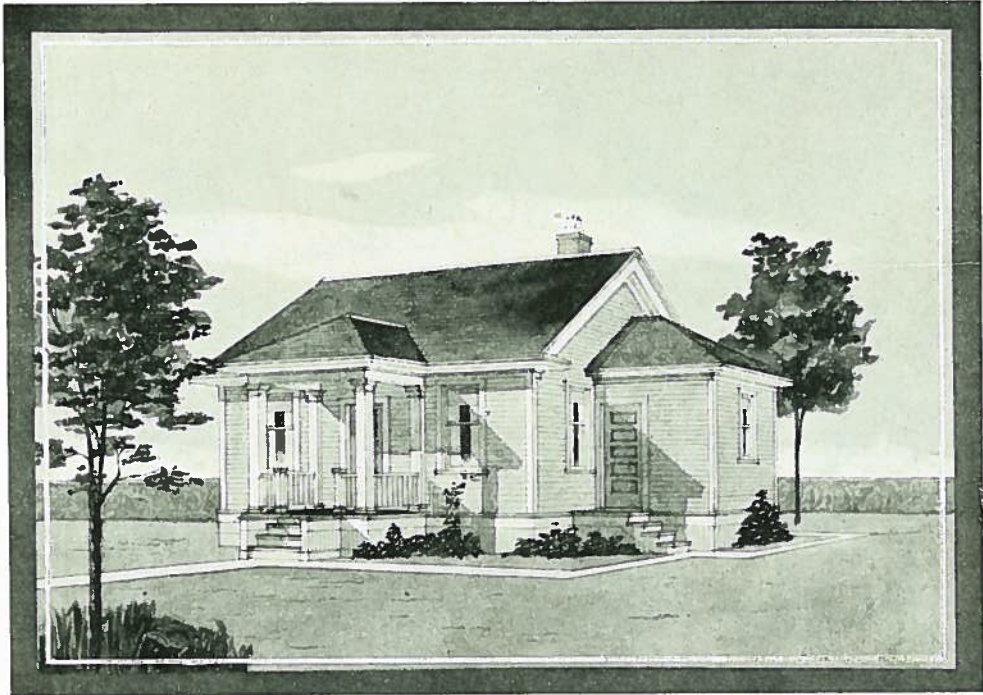


FIVE ROOMS  
AND BATH  
DIMENSIONS  
18 x 24  
14 FT.  
STUDDING  
KITCHEN ADDITION  
14 x 10

WRITE OUR  
HOME BUILDING  
DEPARTMENT  
FOR LATEST  
PRICES ON ALL  
MATERIALS  
AND  
EQUIPMENT



# IDEAL HOMES



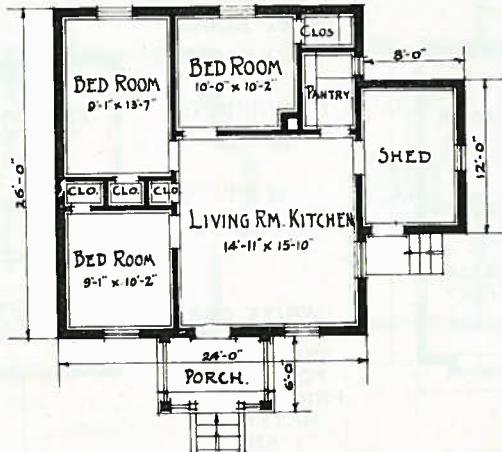
## EASTACRE

EATON PLAN BOOK

E23

This home suggests a way to add to the usual four room cottage; notice the combination living room and kitchen with the bedrooms grouped around it. Each bedroom has a good roomy clothes closet and the pantry and wood shed are well situated, both opening off the kitchen. The plan calls for a surface foundation with a small basement excavated in the centre. Altogether a very desirable, inexpensive home of cosy appearance.

WRITE OUR  
HOME BUILDING  
DEPARTMENT  
FOR LATEST  
PRICES ON ALL  
MATERIALS  
AND  
EQUIPMENT



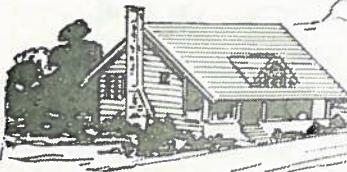
FOUR ROOMS

DIMENSIONS

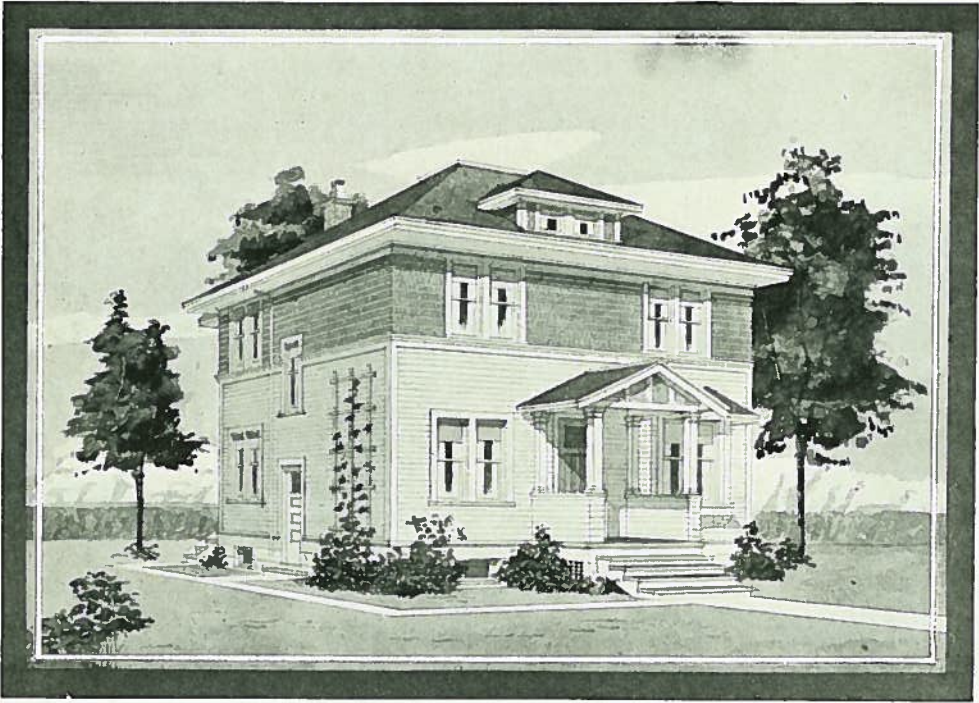
24 x 26

9 FT.

STUDDING



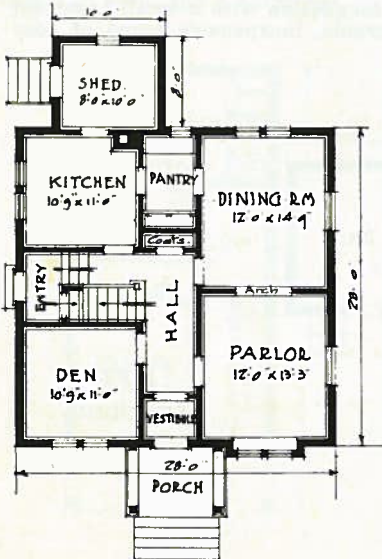
# IDEAL HOMES



## EASTON

EATON PLAN BOOK  
E24

An attractive home that embodies all the modern room arrangements of the larger houses. All the rooms upstairs and down are planned for comfort, with many little points that add to the owners' convenience. A grade entrance leads down to basement and up to kitchen. Notice also the generous sleeping balcony over the shed.

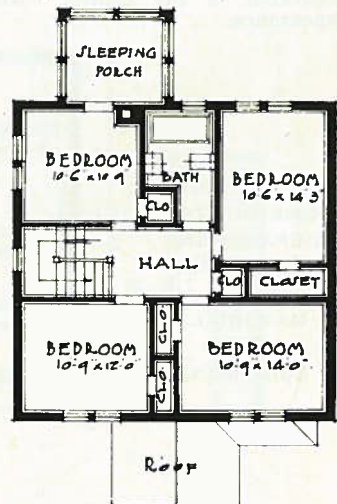


EIGHT ROOMS  
AND BATH

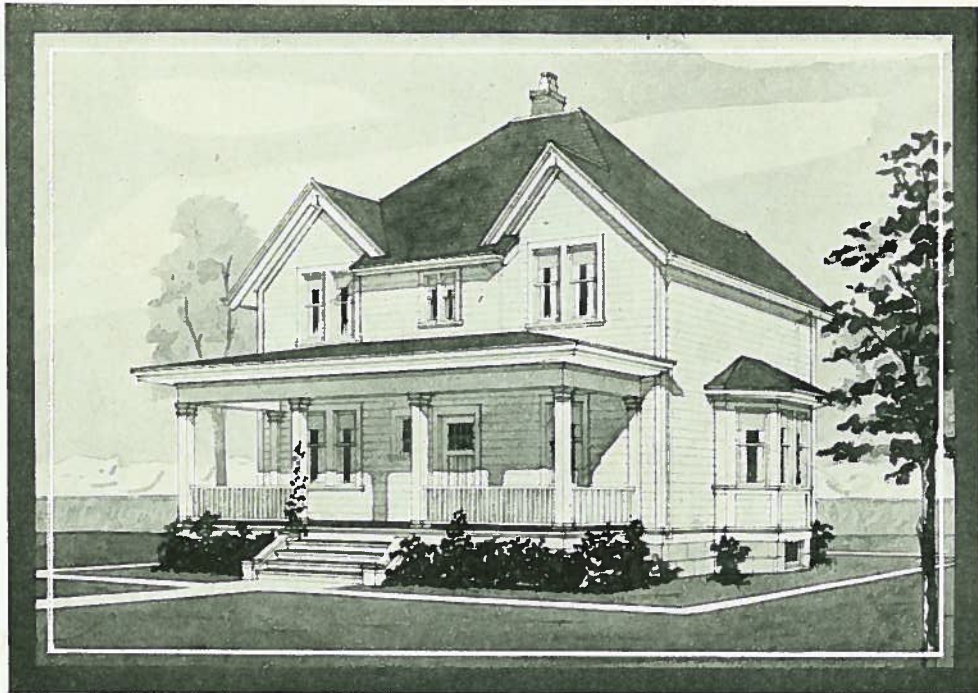
DIMENSIONS  
28 x 28

18 FT.  
STUDDING

WRITE OUR  
HOME BUILDING  
DEPARTMENT  
FOR LATEST  
PRICES ON ALL  
MATERIALS  
AND  
EQUIPMENT



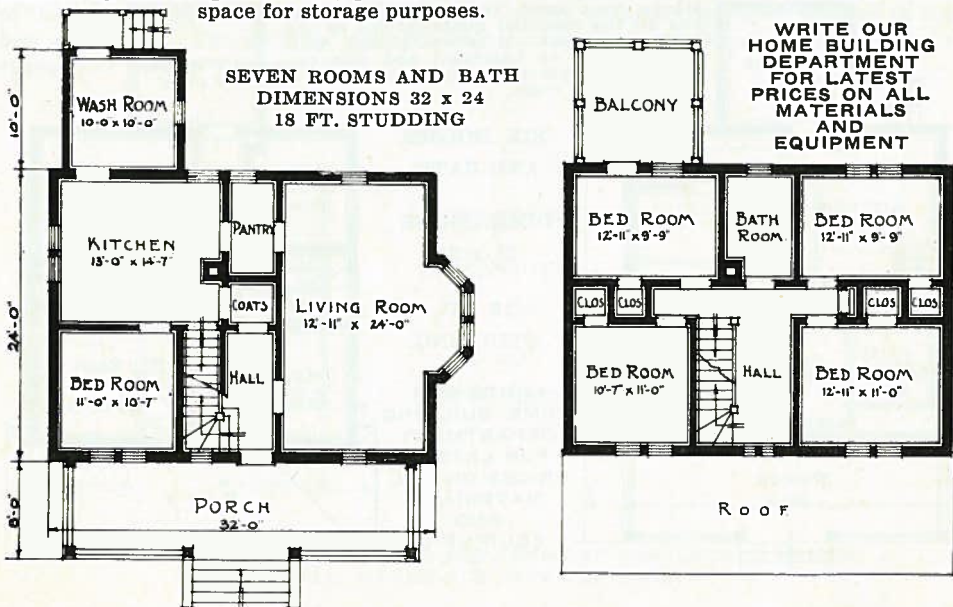
# IDEAL HOMES

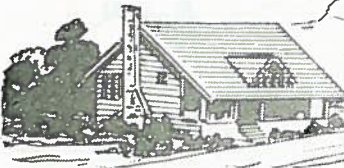


## EADGLEY

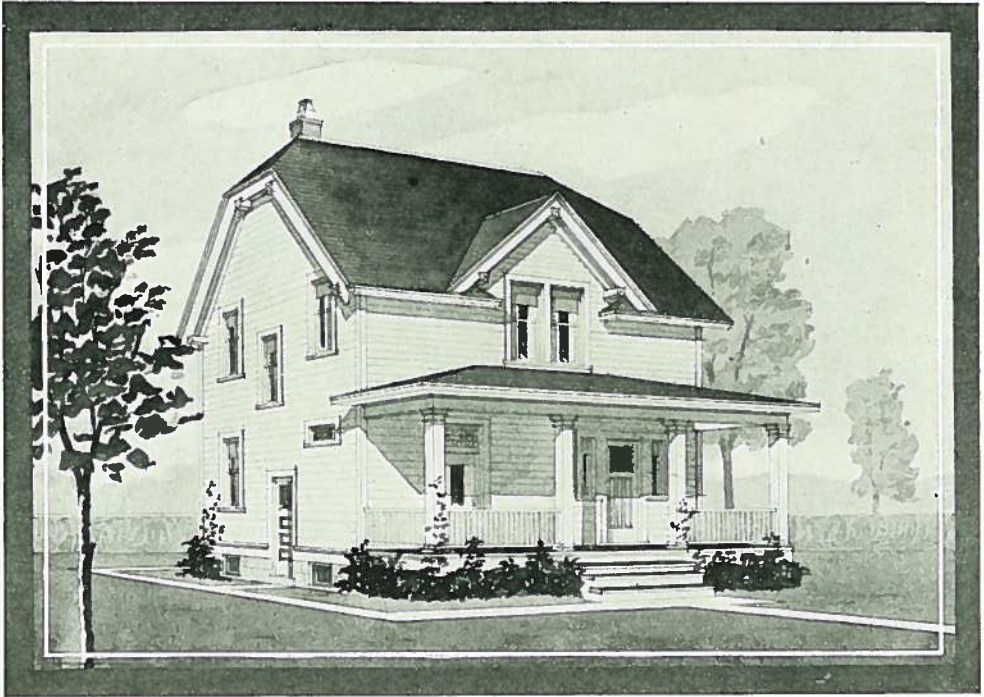
EATON PLAN BOOK  
E25

There is little waste room to be found in this handy interior arrangement. The large, well lighted living and dining room is an attractive feature, divided as it is from the kitchen by the compact serving pantry. Stairs lead to unfinished attic, which provides space for storage purposes.





# IDEAL HOMES

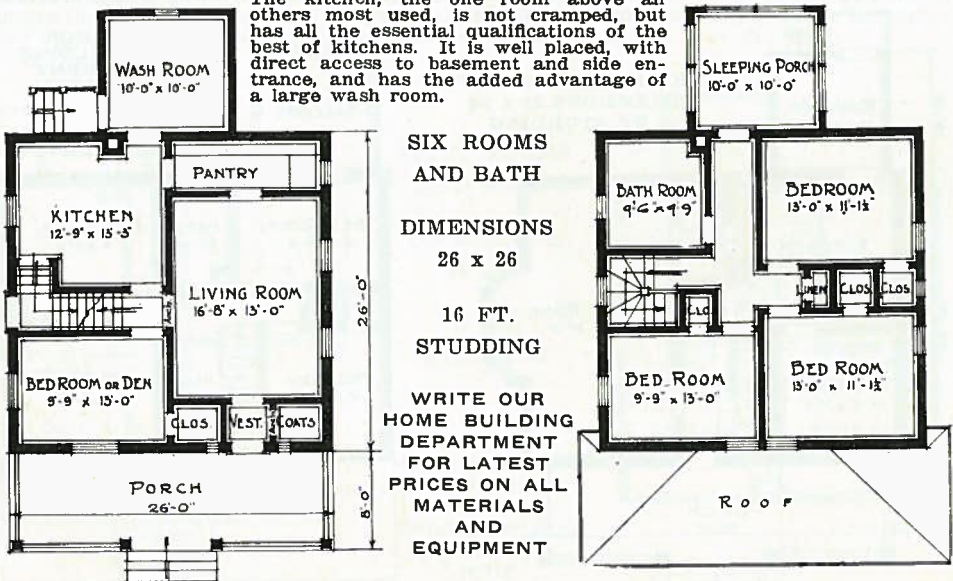


## EARNISLEA

EATON PLAN BOOK

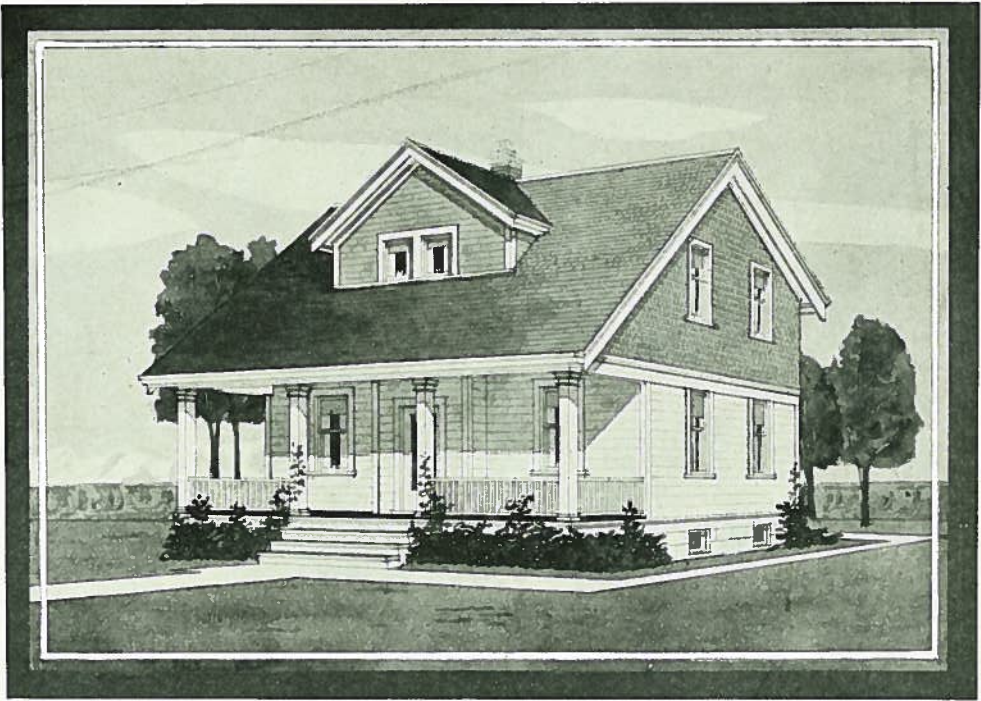
E26

A fine home of unusual attractiveness. The kitchen, the one room above all others most used, is not cramped, but has all the essential qualifications of the best of kitchens. It is well placed, with direct access to basement and side entrance, and has the added advantage of a large wash room.





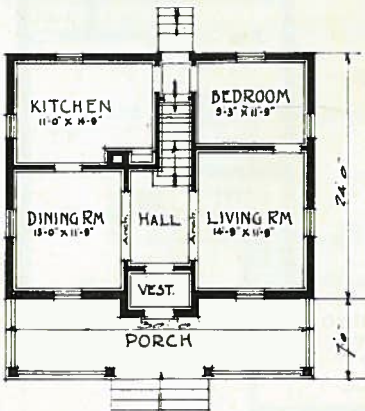
# IDEAL HOMES



## EASTHOLM

EATON PLAN BOOK  
E27

A cosy, economical home which should appeal to quite a number of people. The interior of the house is designed for the average family, and all space has been utilized to the best advantage. The exterior, with its long pitched roof and dormer, present a very substantial looking appearance.



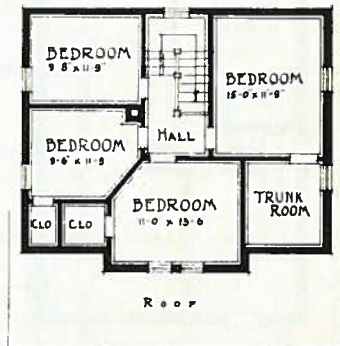
EIGHT ROOMS

DIMENSIONS

30 x 24

14 FT.

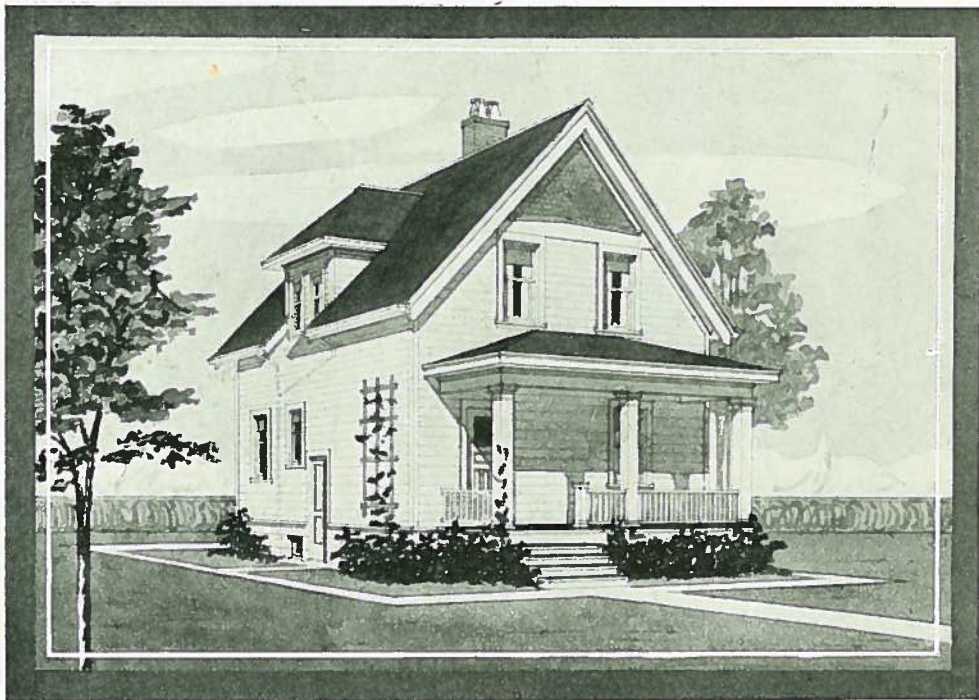
STUDDING



WRITE OUR HOME BUILDING DEPARTMENT FOR LATEST PRICES  
ON ALL MATERIALS AND EQUIPMENT

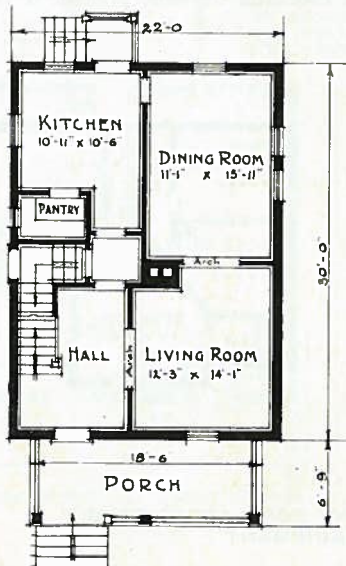


# IDEAL HOMES



**EASTBURGH**  
EATON PLAN BOOK  
E28

This is a house which could not fail to please anyone with moderate ideas. The interior is arranged with every convenience and well lighted throughout. The exterior is of neat and pleasing appearance, and has the advantage of a grade door from which direct access may be obtained to either the kitchen or basement. Where the laundry work is done in the basement this will be appreciated.

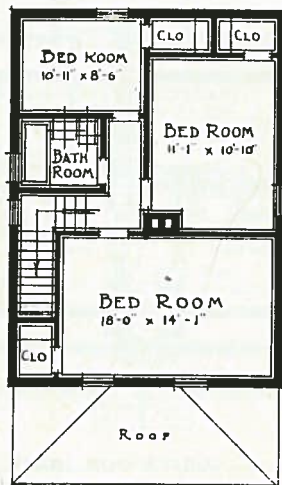


SIX ROOMS  
AND BATH

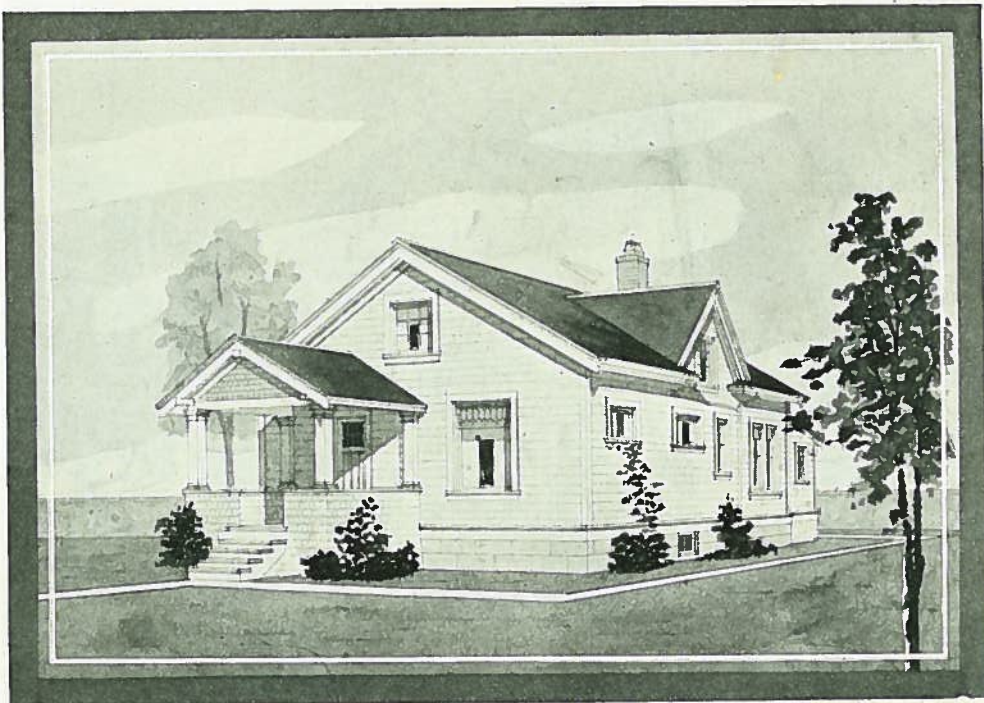
DIMENSIONS  
22 x 30

14 FT.  
STUDDING

WRITE OUR  
HOME BUILDING  
DEPARTMENT  
FOR LATEST  
PRICES ON ALL  
MATERIALS  
AND  
EQUIPMENT



# IDEAL HOMES

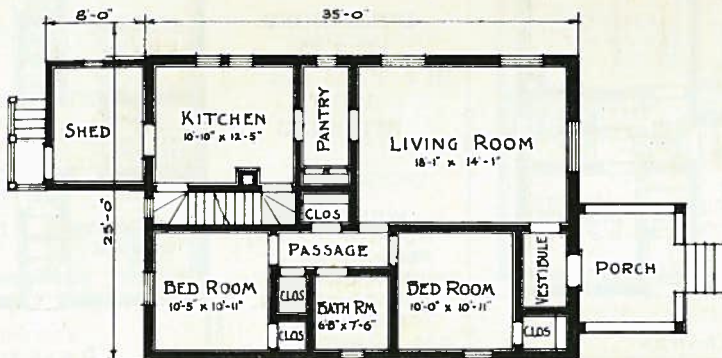


## EARNSLIFFE

EATON PLAN BOOK  
E29

A Bungalow of well proportioned and unusually attractive design, especially adaptable to those who desire all rooms on the one floor. A stairway leads to a large, unfinished attic. Notice that this plan embodies all the conveniences generally found in the more pretentious homes without detracting in any way from the delightful home-like appearance of the design.

FOUR ROOMS AND BATH. DIMENSIONS 25 x 35; 10 FT. STUDDING



WRITE OUR HOME BUILDING DEPARTMENT FOR LATEST PRICES  
ON ALL MATERIALS AND EQUIPMENT



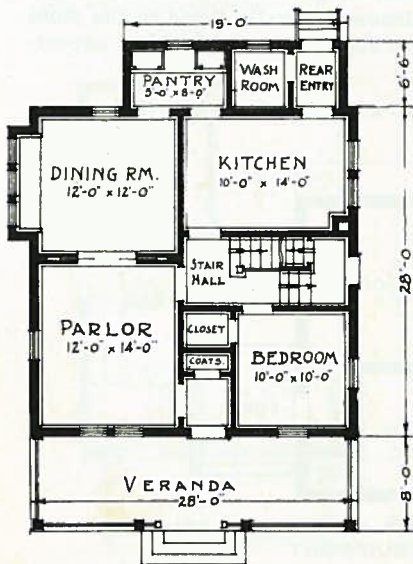
# IDEAL HOMES



## EAKINTON

EATON PLAN BOOK  
E30

An ideal home for the prosperous farmer. The interior of this house is well designed and finished with every convenience. The upstairs balcony across the full width of front is a very desirable feature not included in the majority of houses.

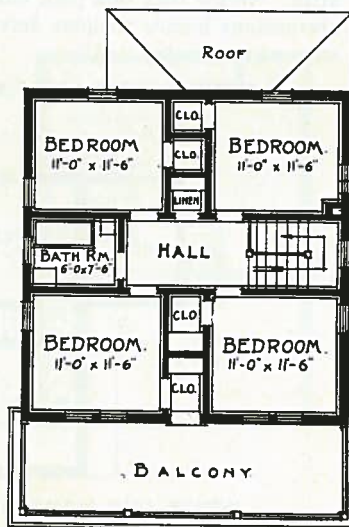


EIGHT ROOMS  
AND BATH

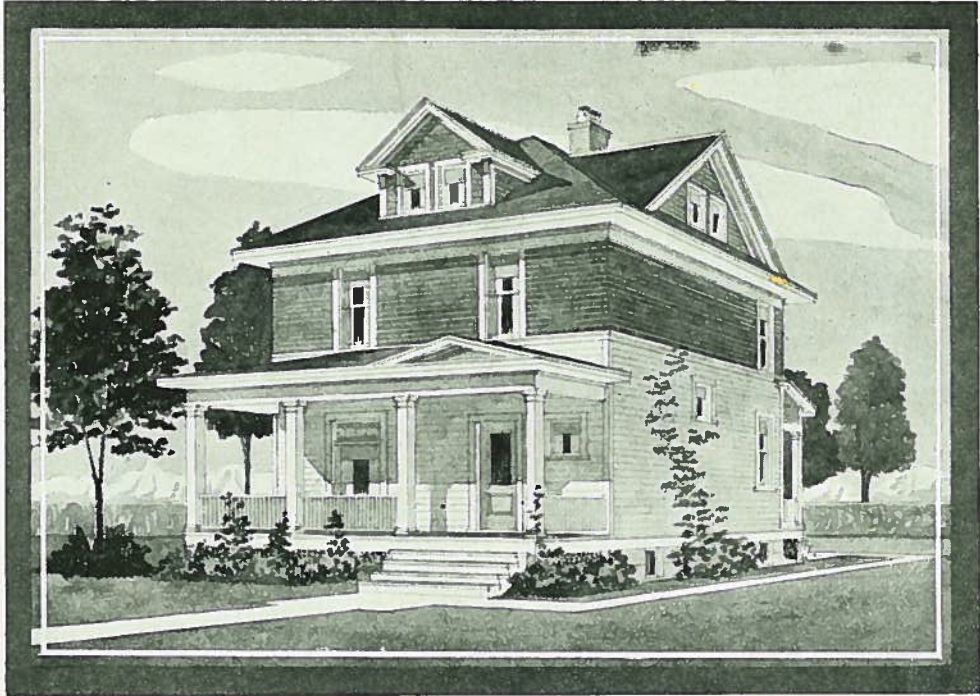
DIMENSIONS  
28 x 28

18 FT.  
STUDDING

WRITE OUR  
HOME BUILDING  
DEPARTMENT  
FOR LATEST  
PRICES ON ALL  
MATERIALS  
AND  
EQUIPMENT

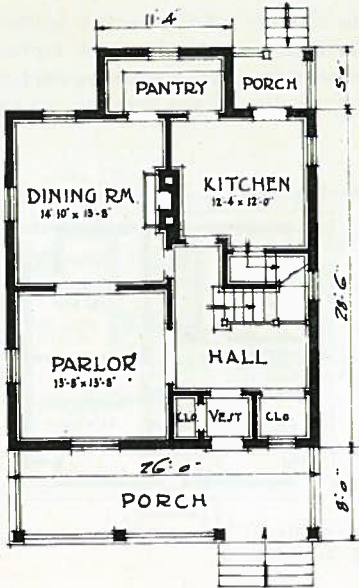


# IDEAL HOMES



## EASTLYNN EATON PLAN BOOK E31

In this plan we offer a full two-story house and large attic (unfinished). Altogether featuring a very roomy and distinctive home with good exterior outlines and convenient interior arrangement.

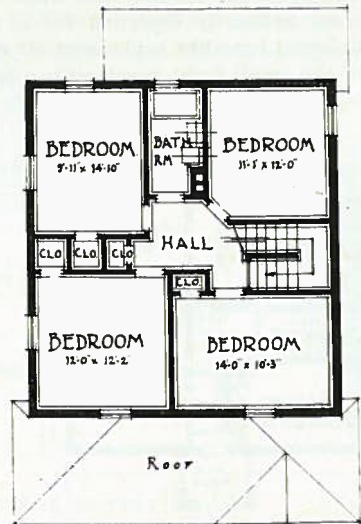


SEVEN ROOMS  
AND BATH

DIMENSIONS  
26 x 28 FT. 6 IN.

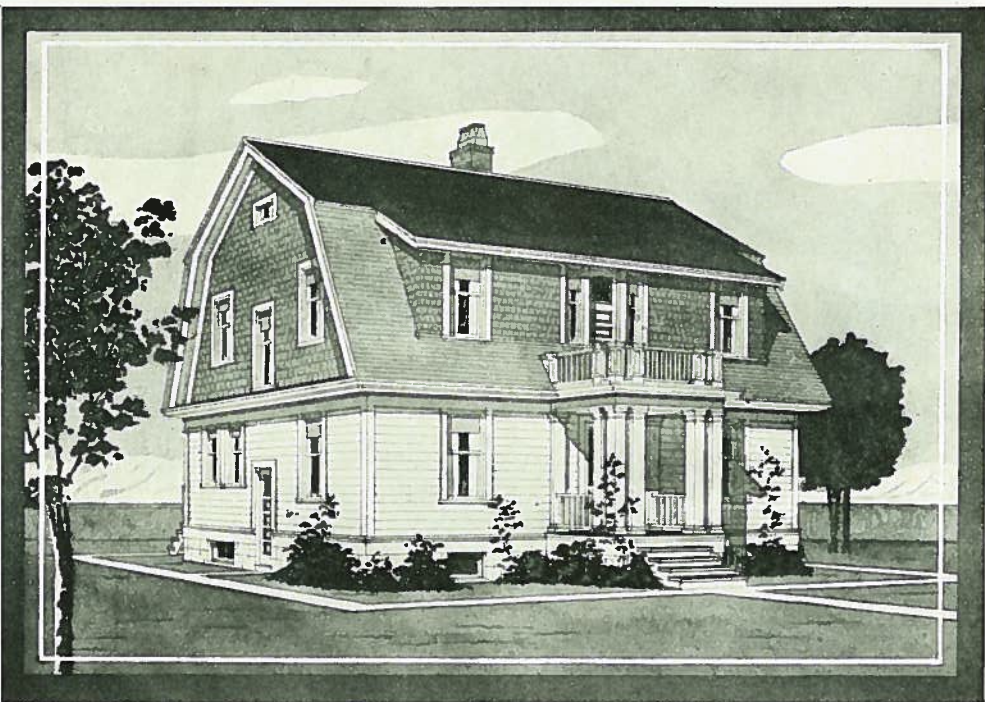
18 FT.  
STUDDING

WRITE OUR  
HOME BUILDING  
DEPARTMENT  
FOR LATEST  
PRICES ON ALL  
MATERIALS  
AND  
EQUIPMENT





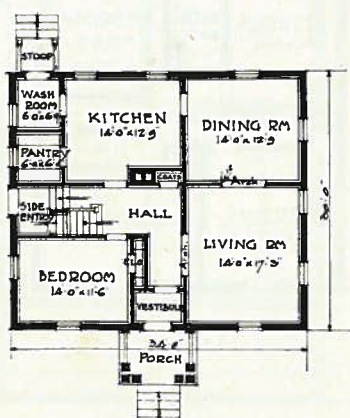
# IDEAL HOMES



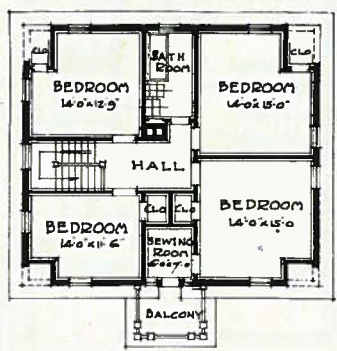
## EAVESBURY

EATON PLAN BOOK  
E32

Too often the farmer with large building sites available chooses a home with a gabled front primarily designed for a narrow city lot. This house of the gambrel roofed Colonial type has a pleasant air of individuality and refinement. The distinctive aspect of the small front porch with a balcony invites further inspection of the interior, which is conveniently and economically laid out.

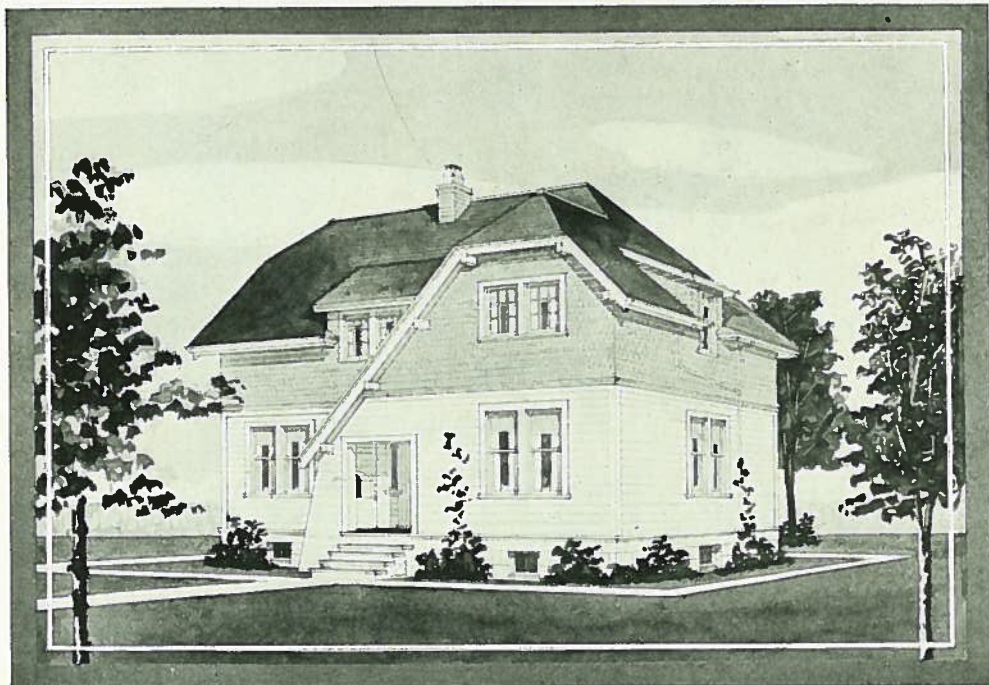


EIGHT ROOMS  
AND BATH  
DIMENSIONS  
34 x 30  
10 FT.  
STUDDING



WRITE OUR  
HOME BUILDING  
DEPARTMENT  
FOR LATEST  
PRICES ON ALL  
MATERIALS  
AND  
EQUIPMENT

# IDEAL HOMES

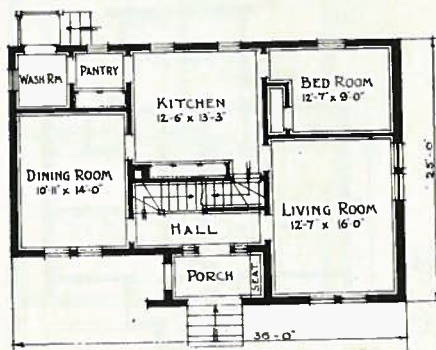


## EARLBOROUGH

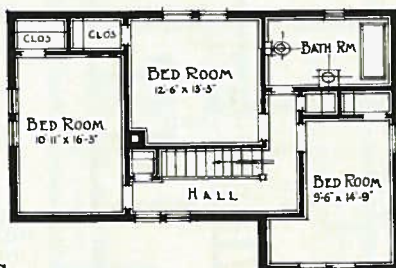
EATON PLAN BOOK

E33

A rather unusual type of house designed for those who appreciate something distinctive. The entire arrangement of the interior is well planned. The main floor contains an ideal living room for a large family, also bedroom and kitchen of generous dimensions. Upstairs are three bedrooms each with clothes closet; also a large bathroom. Two spare closets opening off the hall afford ample storage space for linen, etc.



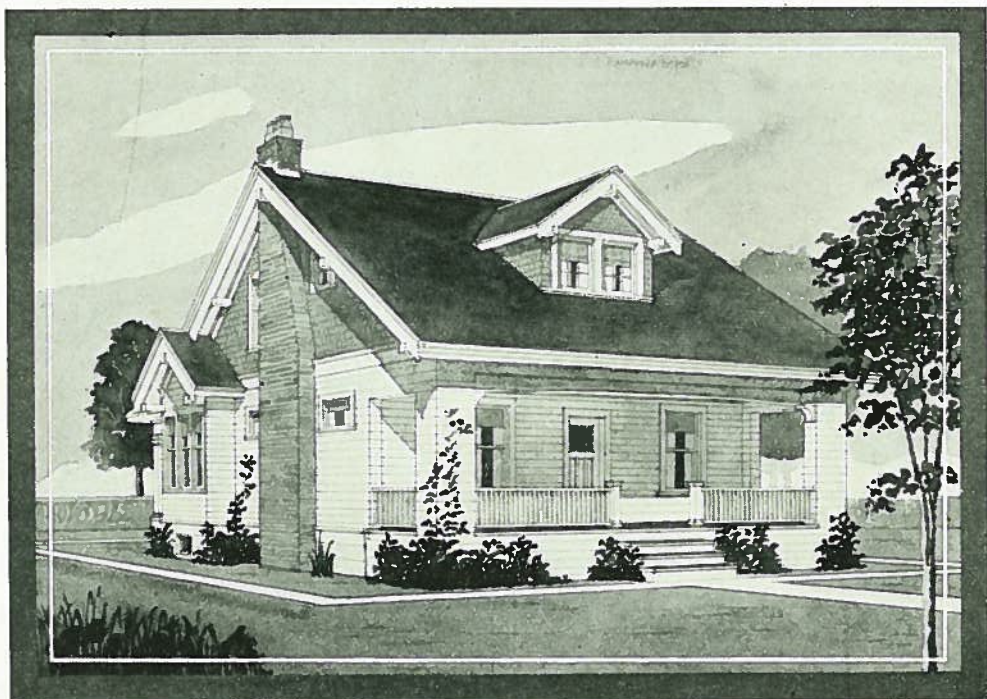
SIX  
ROOMS  
AND  
BATH  
DIMEN-  
SIONS  
36 x 20  
16 FT.  
STUDDING



WRITE OUR HOME BUILDING DEPARTMENT FOR LATEST PRICES  
ON ALL MATERIALS AND EQUIPMENT



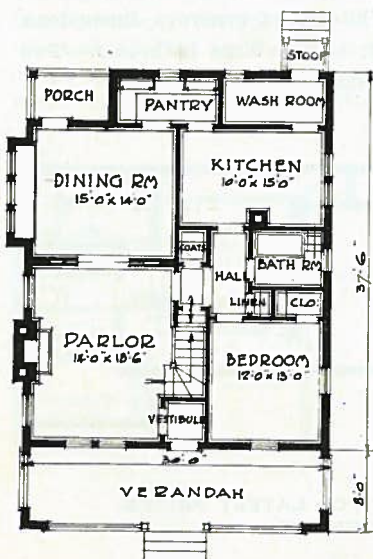
# IDEAL HOMES



## EAGERVILLE

EATON PLAN BOOK  
E34

Especially designed for those who prefer a bungalow type exterior with the facilities of a full two-story house. All rooms large and airy, full height ceilings to all second floor rooms. Large front veranda with small private one at the rear. Bathroom conveniently situated on ground floor.



SEVEN ROOMS  
AND BATH

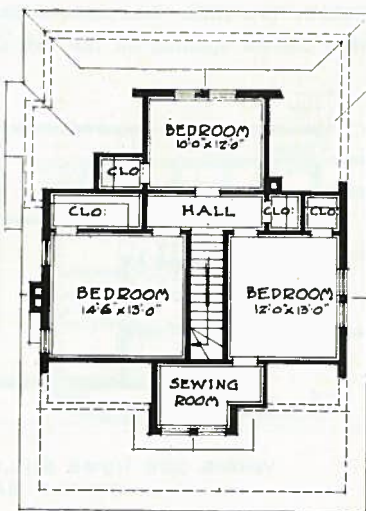
DIMENSIONS

30 x 37

9 FT.

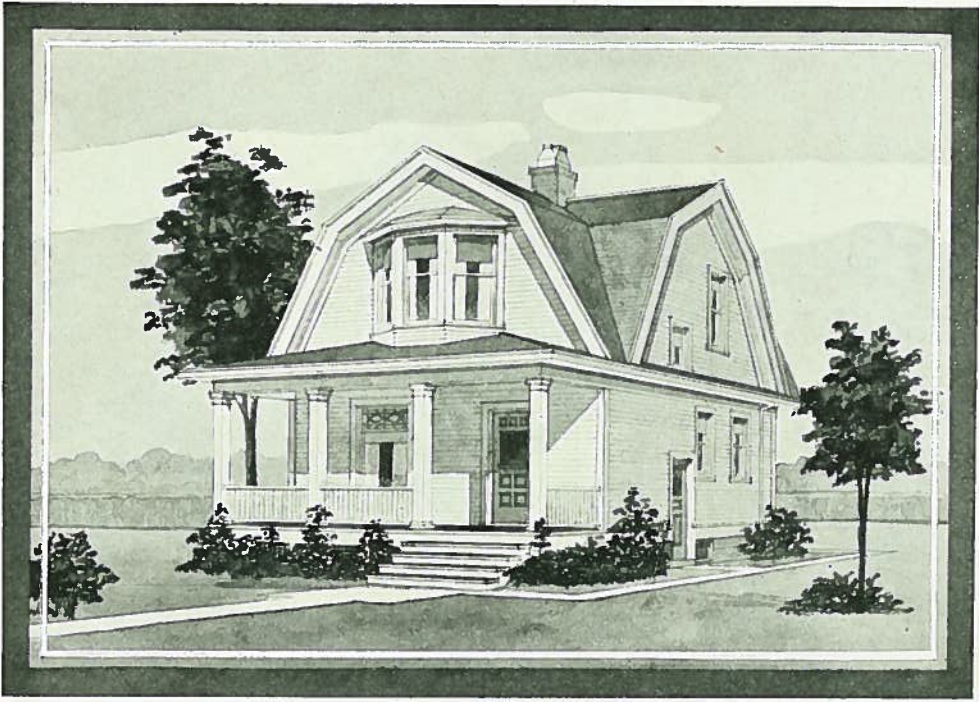
STUDDING

WRITE OUR  
HOME BUILDING  
DEPARTMENT  
FOR LATEST  
PRICES ON ALL  
MATERIALS  
AND  
EQUIPMENT



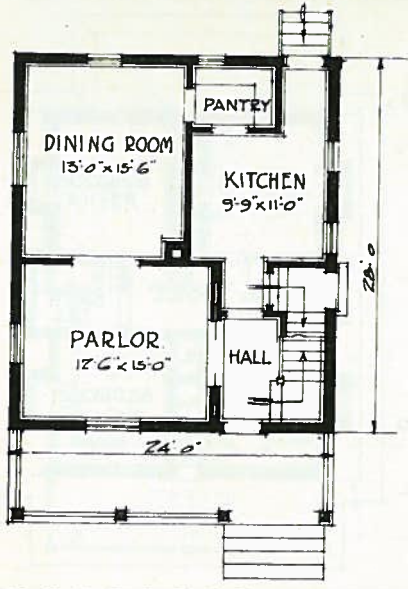


# IDEAL HOMES



## EARLSFIELD EATON PLAN BOOK E35

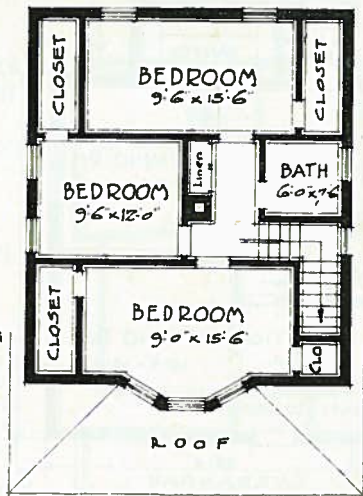
Here is one of the best little house designs. With its large veranda, bay window in front room of second floor, and gambrel roof, it certainly presents a most pleasing appearance and at the same time well and conveniently arranged. It has front and rear entrance and a grade door by which either basement or first story may be entered. Although only a story and a half high, the gambrel roof makes bedroom walls square with the ceilings.



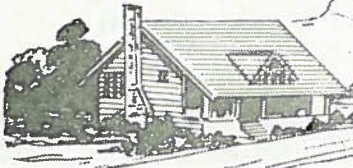
SIX ROOMS  
AND BATH

DIMENSIONS  
24 x 28

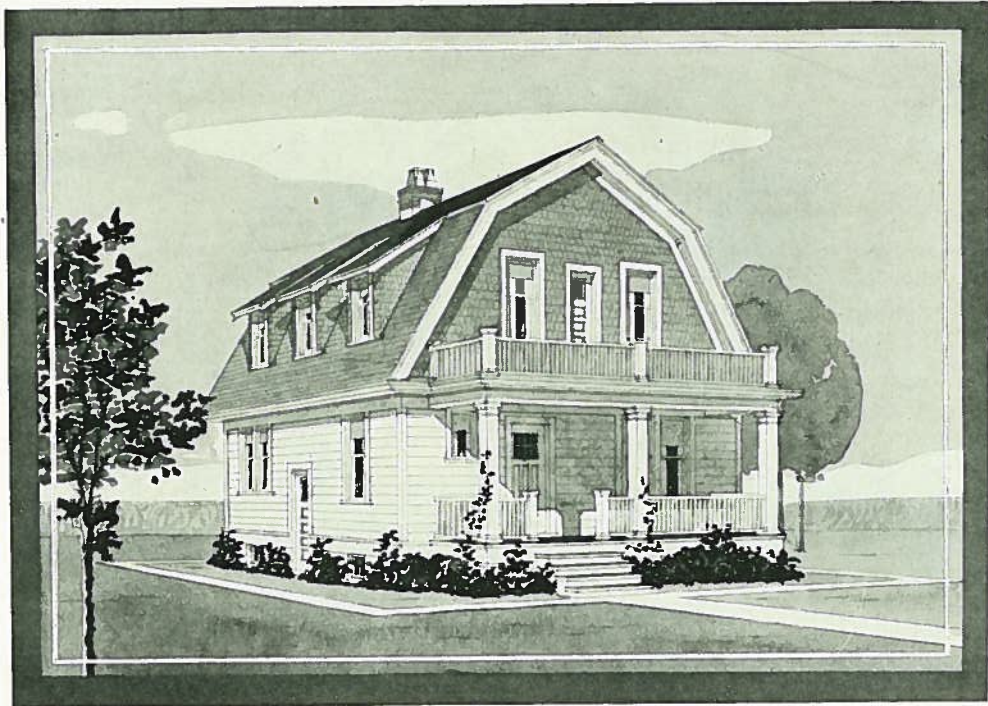
12 FT.  
STUDDING



WRITE OUR  
HOME BUILDING  
DEPARTMENT  
FOR LATEST  
PRICES ON ALL  
MATERIALS  
AND  
EQUIPMENT

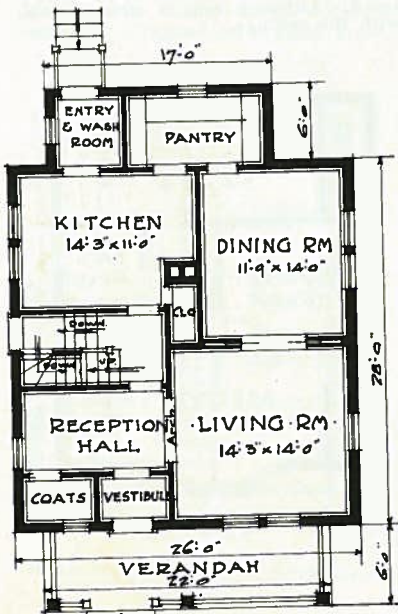


# IDEAL HOMES



## EARNVILLE EATON PLAN BOOK E36

Here is a house with the ever-popular gambrel roof, and yet it has an air of its own with its three dormer windows upstairs on each side of the house. The interior is well arranged; notice the vestibule on the main floor leading into a spacious reception hall. Upstairs the bedrooms are all the same size, and one front room has an entrance out to the balcony.



SEVEN ROOMS  
AND BATH

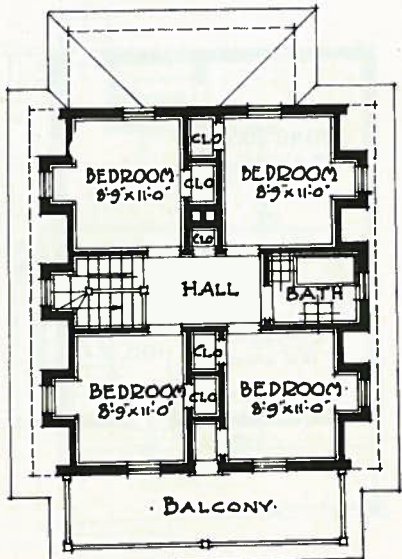
DIMENSIONS

26 x 28

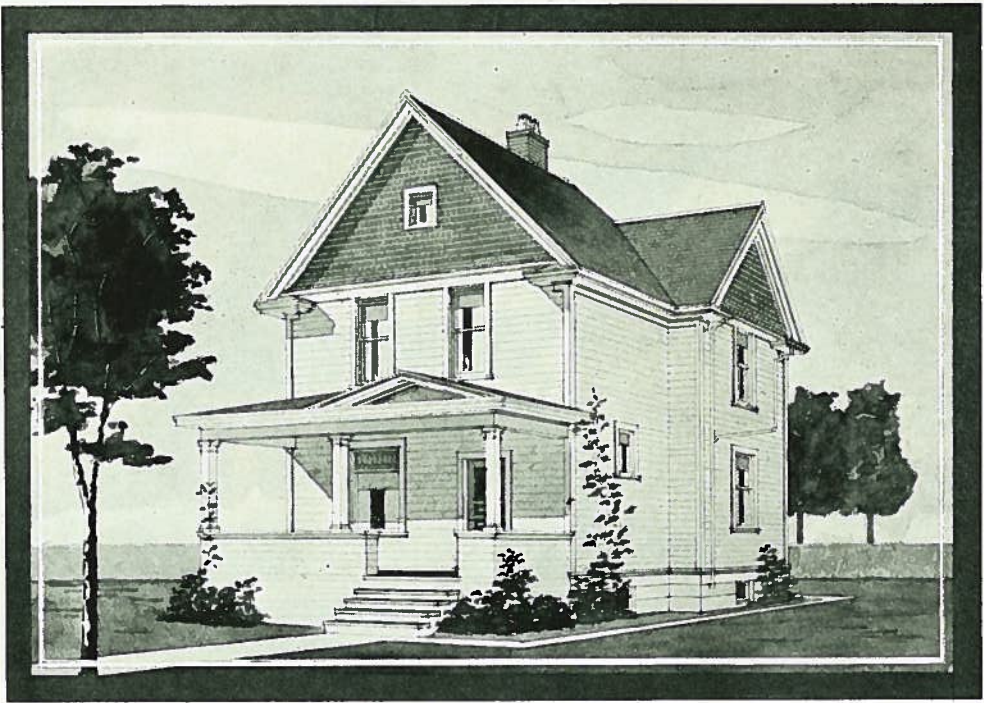
10 FT.

STUDDING

WRITE OUR  
HOME BUILDING  
DEPARTMENT  
FOR LATEST  
PRICES ON ALL  
MATERIALS  
AND  
EQUIPMENT

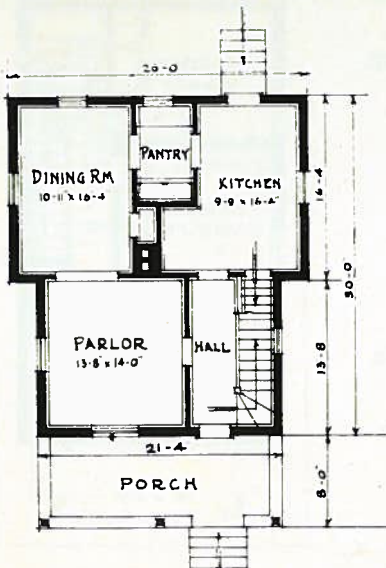


# IDEAL HOMES



## EASTCOURT EATON PLAN BOOK E37

If you wish for a small house and still desire to have a general air of prosperity, you will do well to give this design second thought. There are three rooms, hall and pantry on the first floor with a large oriel window in the parlor, while the second floor has three rooms and bath all well lighted.

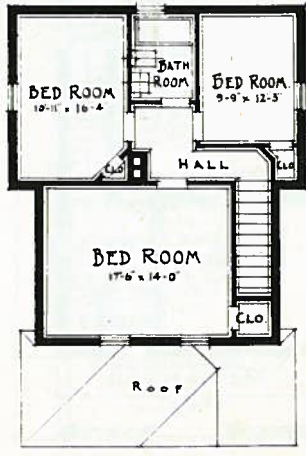


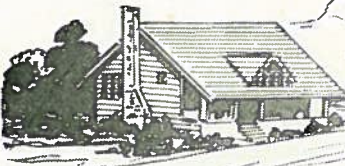
SIX ROOMS  
AND BATH

DIMENSIONS  
26 x 30

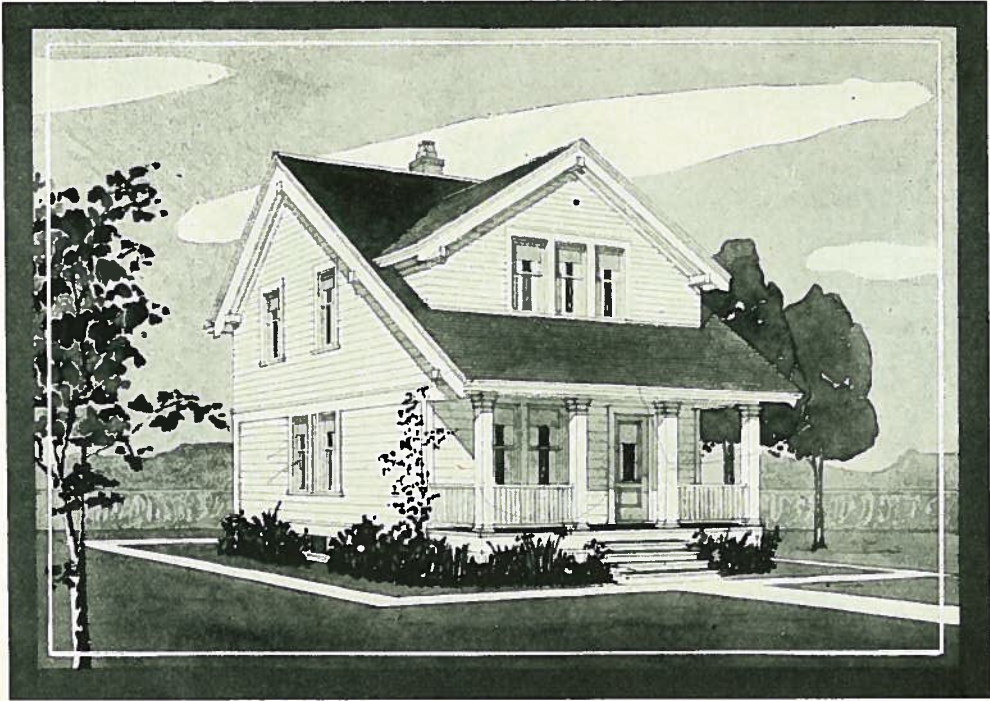
18 FT.  
STUDDING

WRITE OUR  
HOME BUILDING  
DEPARTMENT  
FOR LATEST  
PRICES ON ALL  
MATERIALS  
AND  
EQUIPMENT



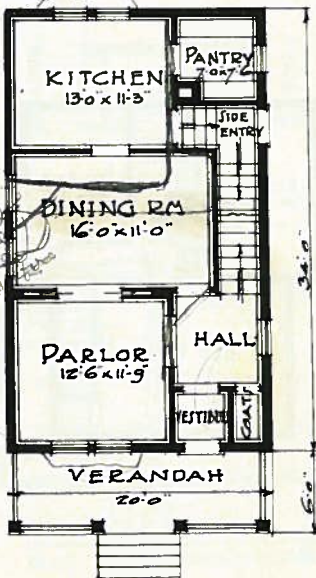


# IDEAL HOMES



## EAVESHAM EATON PLAN BOOK E38

This house, without doubt, is one of the best of its kind and size. The compactness and artistic arrangement makes one long to own it for a home. The rooms are all well lighted and have all the conveniences of many a larger house, in fact it is ideal in every way.

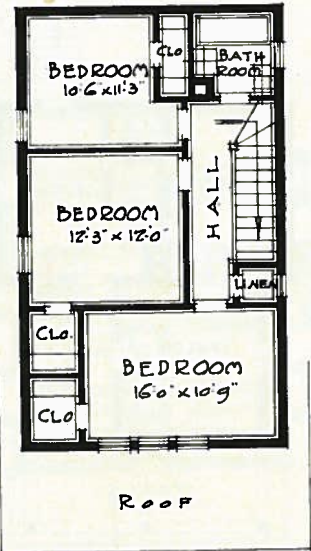


SIX ROOMS AND BATH

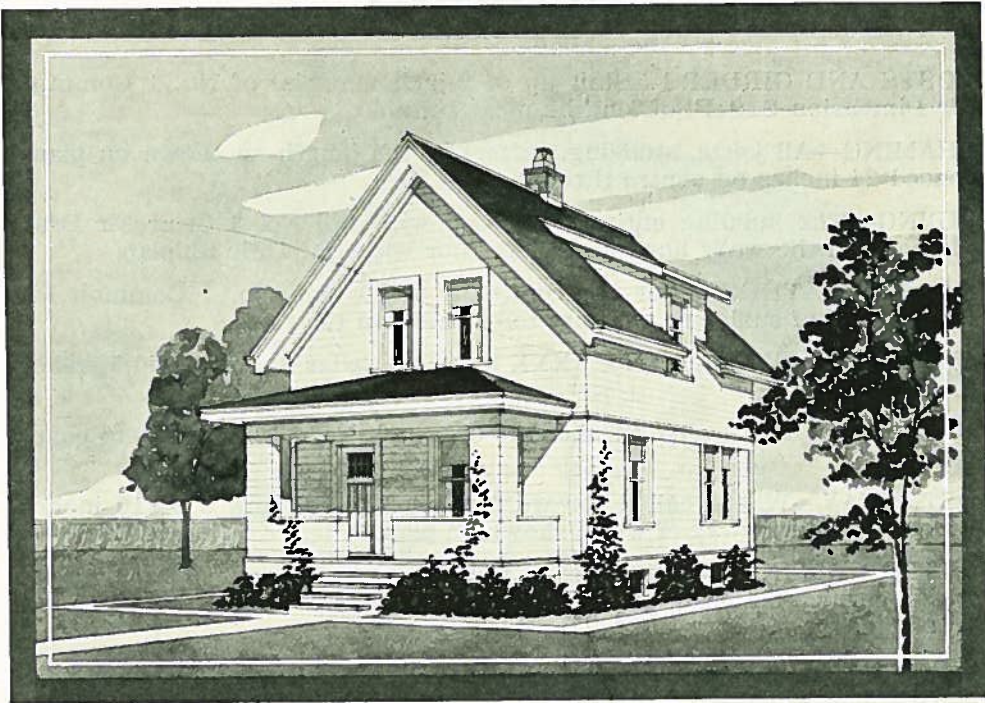
DIMENSIONS  
20 x 34

16 FT.  
STUDDING

WRITE OUR  
HOME BUILDING  
DEPARTMENT  
FOR LATEST  
PRICES ON ALL  
MATERIALS  
AND  
EQUIPMENT



# IDEAL HOMES

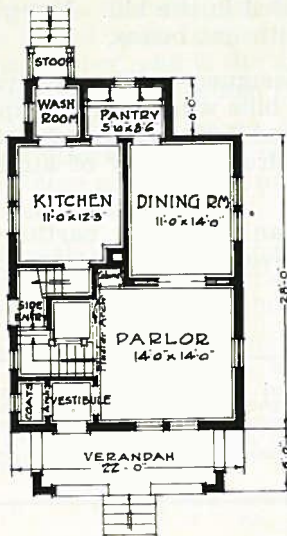


## EARNSCROFT

EATON PLAN BOOK

E39

A small, cosy house which should please many. The interior is well devised and rooms are all light and airy. The solid built up rail on the porch with the privacy which it affords is a very desirable feature, as well as making it a very simple matter to have the porch screened in during the Summer months.

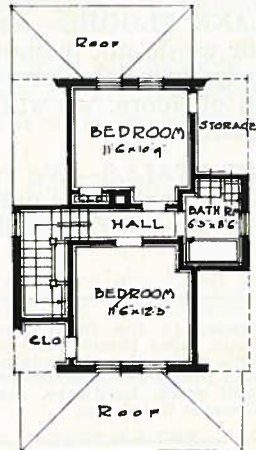


FIVE ROOMS  
AND BATH

DIMENSIONS  
22 x 28

14 FT.  
STUDDING

WRITE OUR  
HOME BUILDING  
DEPARTMENT  
FOR LATEST  
PRICES ON ALL  
MATERIALS  
AND  
EQUIPMENT



# SPECIFICATIONS OF MATERIAL FURNISHED FOR OUR BARN DESIGNS

**POSTS AND GIRDERS**—Built up of 2-inch material of No. 1 Common Fir Dimension S1S1E, of lengths most suitable.

**FRAMING**—All joists, studding, rafters of the length as shown on plans spaced 24 inches on centre throughout.

**SIDING**—The building entirely enclosed with 1x6 No. 3 Clear Fir Drop Siding with the walls lined up to loft floor with No. 1 Fir Shiplap.

**ROOF SHEATHING**—For the roof, 1x8 or 10 inch No. 1 Common Fir Boards S1S of sufficient quantity to close board the roof.

**SHINGLES**—All shingles No. 1 XXX B.C. Red Cedar Shingles laid 5 inches to the weather.

**HAY LOFT FLOOR**—We furnish 1x6 or 8 inch No. 1 Fir Shiplap to cover floor.

**DRIVEWAY**—Where called for we furnish 2 inch plank 8 or 10 inches wide to build driveway of width shown on plan.

**EXTERIOR FINISH**—All exterior finish such as corner boards, fascia, frieze, cornice material, etc., will be supplied in No. 3 Clear Fir surfaced on all sides.

**WINDOW FRAMES**—Frames for all sash are to be made of 2 inch rabbeted stock, which we furnish in long lengths with standard sill and blind stop finished with 1x5 No. 3 Clear Fir outside casings.

**DOOR MATERIAL**—For all doors we furnish 1 inch stock of several widths to form the rails and stiles for framing of doors and sufficient V-joint Ceiling to form panels, making doors 3-ply in thickness, all No. 3 clear stock.

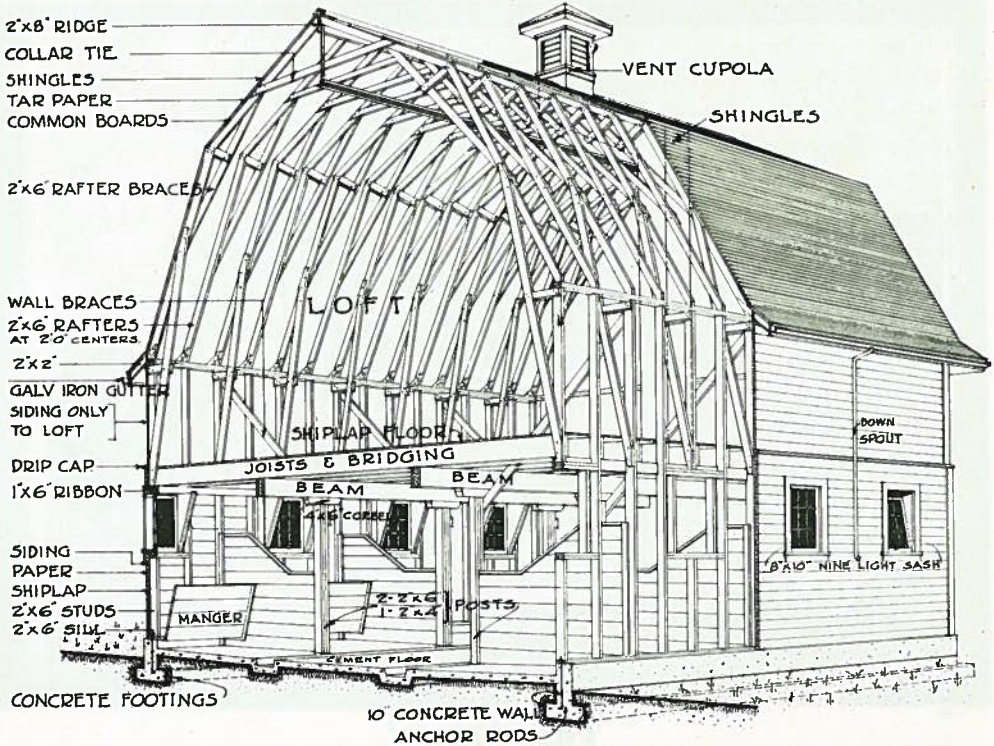
**STALL PARTITIONS AND MANGERS**—Sufficient 2 inch material of suitable lengths to build the horse and cow stall partitions as shown on the detail sheet accompanying plans will be included in the bill. Mangers built of 2 inch plank front and 1 inch bottom with oat boxes.

**PLANK FLOORS**—As all our Barn Plans are designed with a concrete floor we do not include any plank flooring in our bills whatever, but upon receipt of particulars as to preference in method of laying sills and direction of floors, we will be pleased to estimate desired quantity of lumber required.

**BOX STALLS**—We furnish sufficient 2 inch plank to form partitions, also to line up the outside wall area to 5 feet above floor line, above this to be lined with 1 inch shiplap.

Owing to the fluctuation of prices we have not published any costs in this plan book. Our Home Building Department will gladly furnish upon request an estimate on any material and equipment desired. All inquiries are answered promptly, suggestions and prices being given without any charge or obligation. Mill work, hardware, metal work and other builders' requirements are listed in our General Catalogue.

# IDEAL HOMES



## EATON BARN CONSTRUCTION

When we give an estimate on a Barn, we figure for material exactly as shown in this diagram, which shows very clearly the construction of the outside wall up to loft floor, the method of framing rafters, braces, etc. We hope this diagram will be very carefully studied by intending builders, as it has been our experience that this is the easiest erected, requires less lumber, and is the most economical form of construction to withstand conditions in Western Canada.

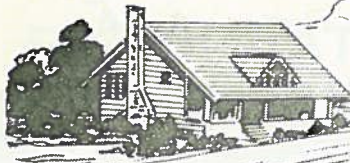
We design our barns with the correct size sash, fresh air intakes and ventilators, per head of stock, as sunshine and fresh air are the greatest purifiers and health producers that we have. There is no equal as a disease preventative.

All sash are hinged at the bottom, having guards at the side in order that the cold air will be directed to the ceiling to mingle with the warm air before coming into contact with the stock.

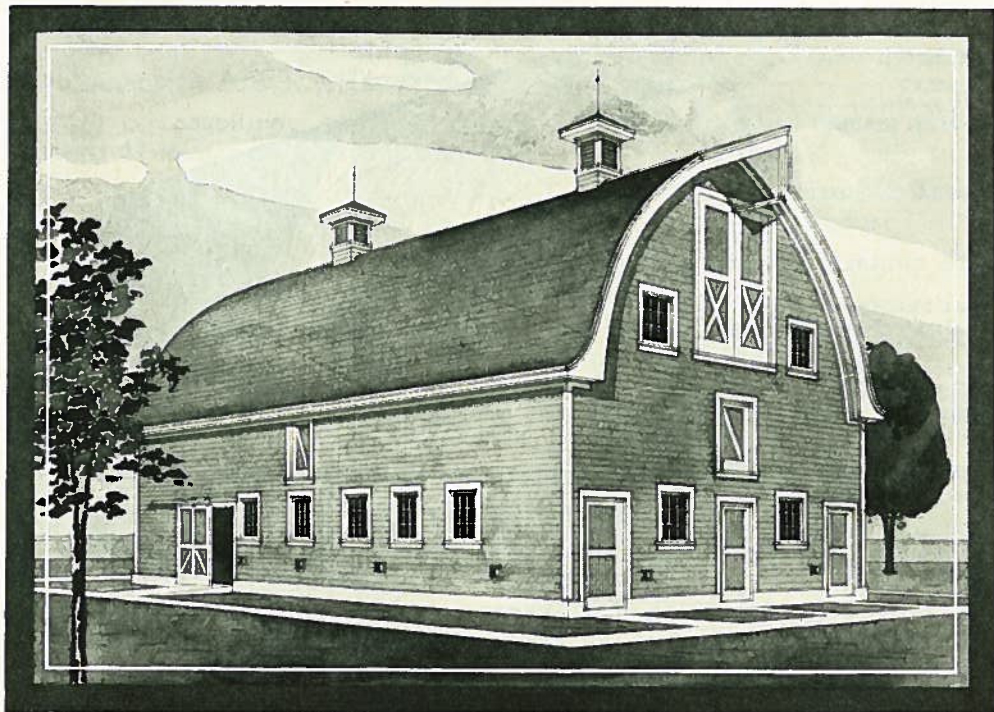
We also show the construction of concrete floors on all of our barn plans—a feature which we strongly advocate—as it stands for cleanliness and health and also saves labor in taking care of stock.

These details all tend toward larger production and better returns for the amount invested.

WRITE OUR HOME BUILDING DEPARTMENT FOR LATEST PRICES  
ON ALL MATERIALS AND EQUIPMENT



# IDEAL HOMES

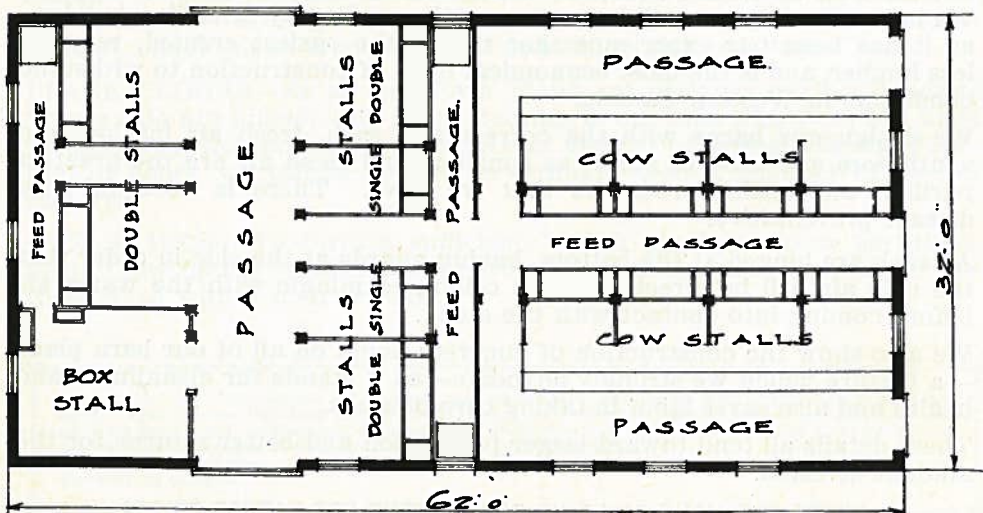


## EARLBANK

### EATON PLAN BOOK

General Purpose Barn, planned for extension of cow stalls. Standard plans of the following sizes, all with 14 ft. studding. Rafters built up of four-ply 1x4 material.

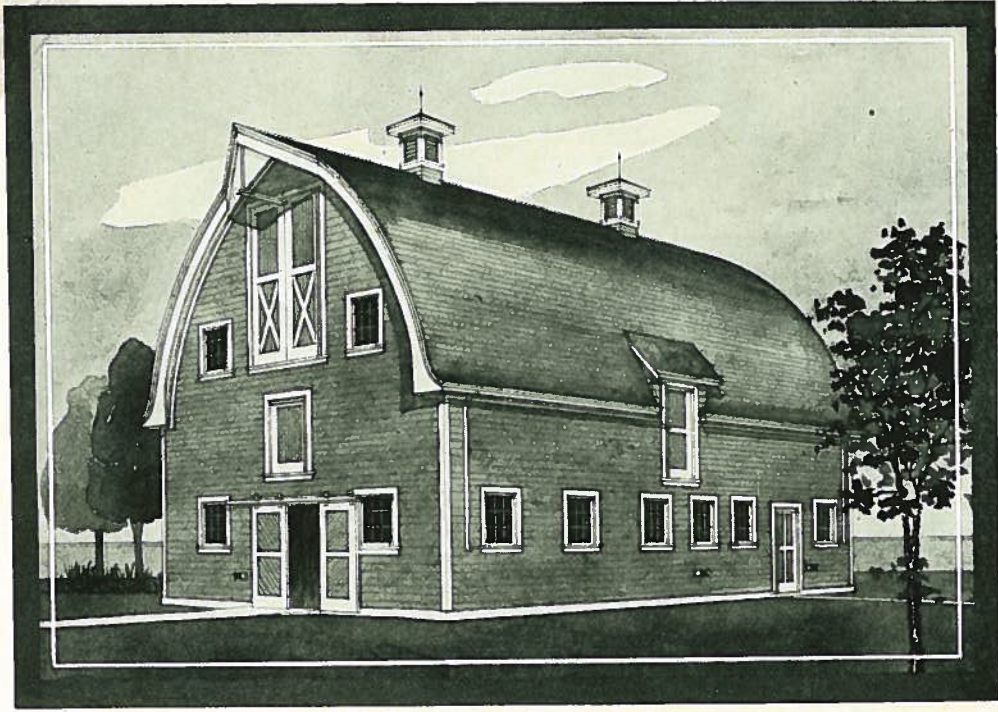
- E80—Size 32 x 48. Capacity for 11 horses and 8 cows.
- E81—Size 32 x 54. Capacity for 11 horses and 12 cows.
- E82—Size 32 x 62. Capacity for 11 horses and 16 cows.
- E83—Size 32 x 70. Capacity for 11 horses and 20 cows.
- E84—Size 32 x 78. Capacity for 11 horses and 24 cows.



WRITE OUR HOME BUILDING DEPARTMENT FOR LATEST PRICES  
ON ALL MATERIALS AND EQUIPMENT



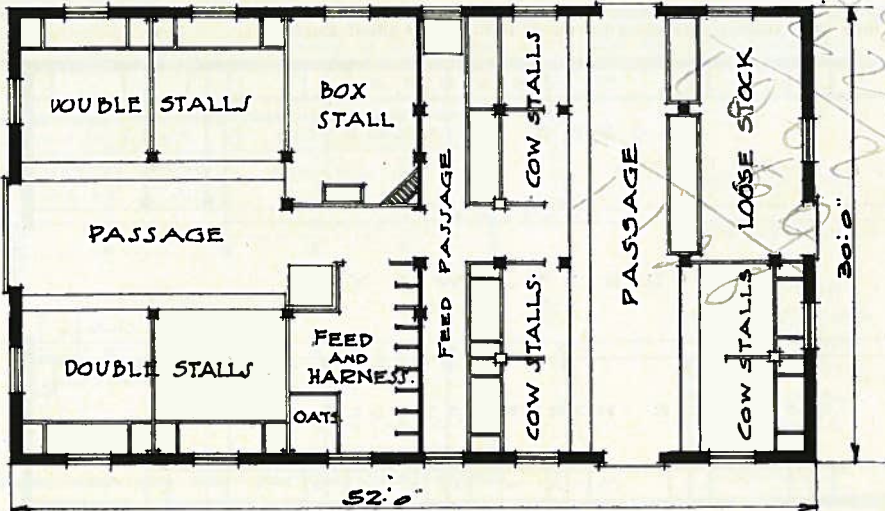
# IDEAL HOMES



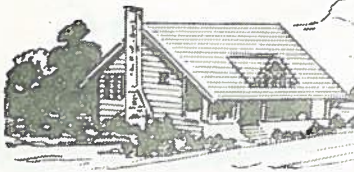
## EATONBANK

General Purpose Barn, planned for extension of horse stalls. Standard plans of the following sizes, all with 14 ft. studding. Rafters built up of four-ply 1x4 material.

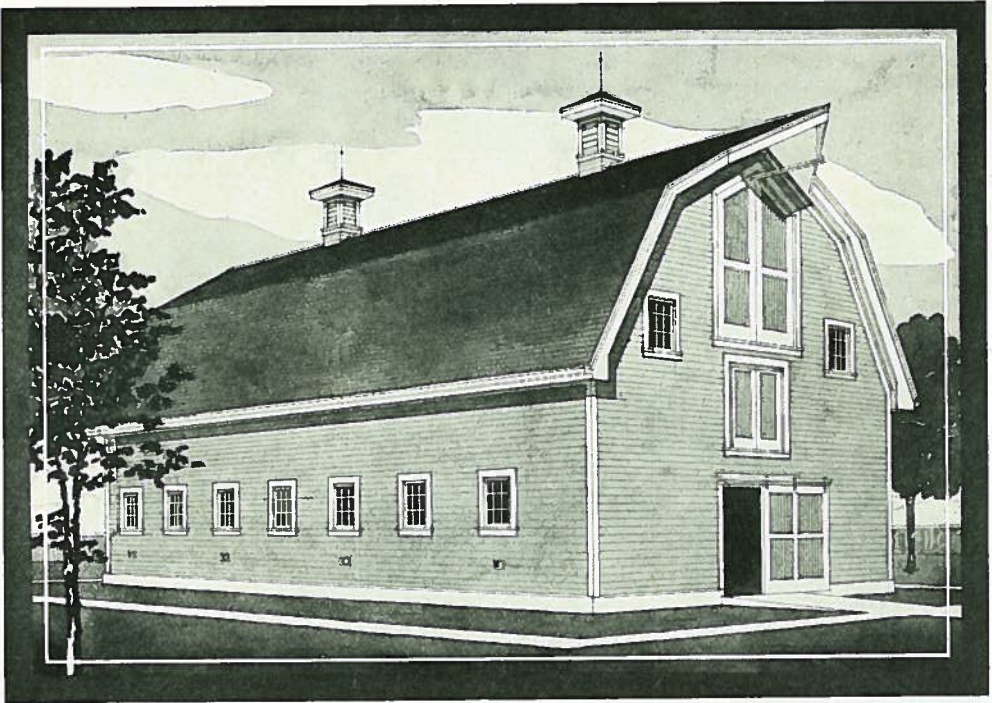
- E85—Size 30 x 44. Capacity, 16 cows and 5 horses.
- E86—Size 30 x 48. Capacity, 16 cows and 7 horses.
- E87—Size 30 x 52. Capacity, 16 cows and 9 horses.
- E88—Size 30 x 56. Capacity, 16 cows and 11 horses.
- E89—Size 30 x 60. Capacity, 16 cows and 13 horses.



WRITE OUR HOME BUILDING DEPARTMENT FOR LATEST PRICES ON ALL MATERIALS AND EQUIPMENT



# IDEAL HOMES

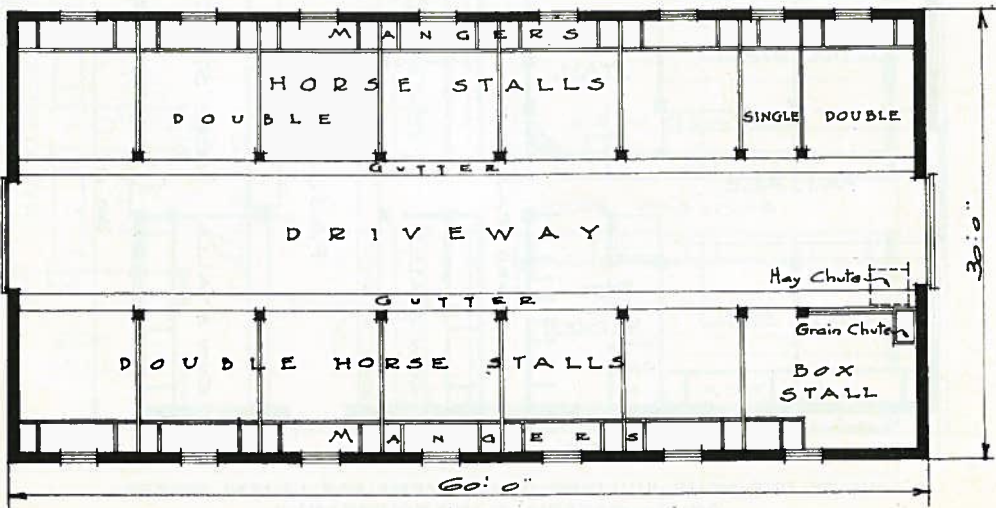


## EAGLEBANK EATON PLAN BOOK E90

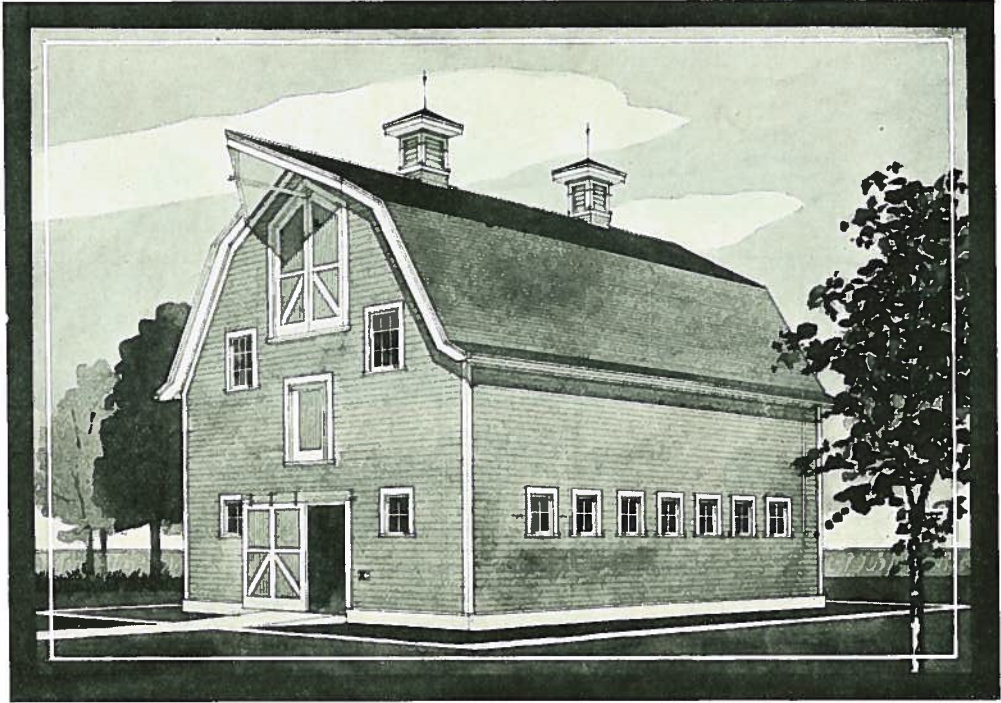
- E90—Horse Barn, 30x48; 14 ft. Studding.
- E91—Horse Barn, 30x52; 14 ft. Studding.
- E92—Horse Barn, 30x60; 14 ft. Studding.

- E93—Horse Barn, 36x48; 14 ft. Studding, with feed alley.
- E94—Horse Barn, 36x60; 14 ft. Studding, with feed alley.

Study the construction as shown on page thirty-nine; also read on page thirty-eight the specifications of material furnished by us to build these Ideal Barns.



# IDEAL HOMES



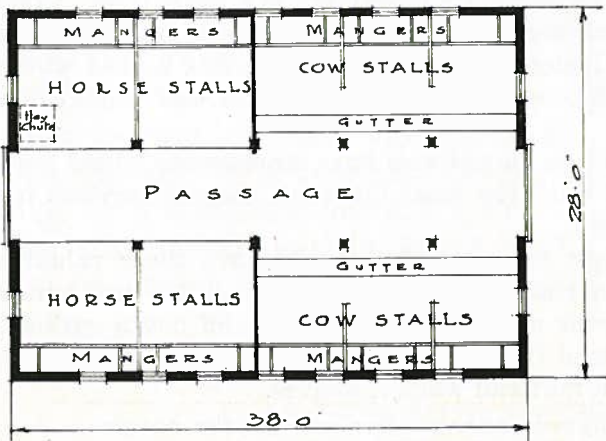
## EASTER BANK

EATON PLAN BOOK

E95

It is of vastly more importance that the farm should have proper barns and outbuildings than a good house. While a good house adds comfort to one's existence, a good barn adds dollars to one's income, therefore it is a good investment and not an expense. Study this plan carefully. We believe it to be very attractive in exterior appearance as well as having a very convenient interior arrangement.

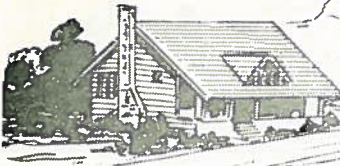
Proper housing with the minimum outlay for feed and labor amply repays the stockman. The built-up timbers used in the construction of this building have many advantages over the solid timber and are uniformly recognized to be stronger, more rigid and more economical. There are doors in each end, providing a driveway through the stable.



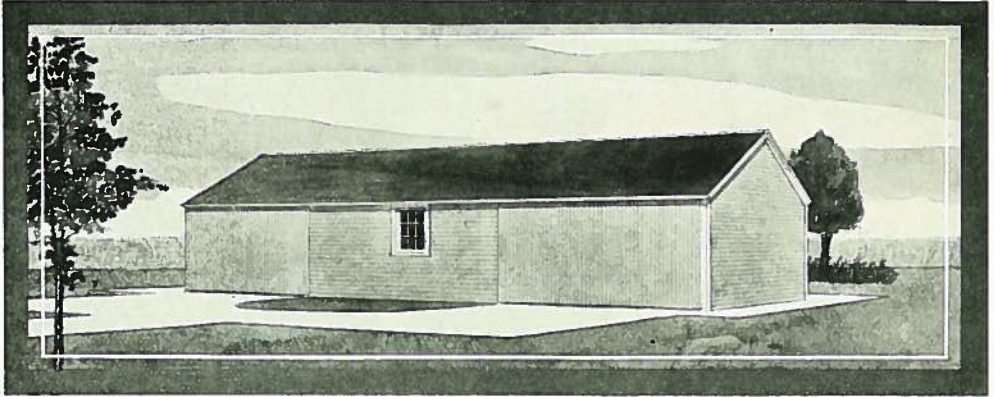
SIZE 28 x 38

14 FT. STUDDING

WRITE OUR  
HOME BUILDING  
DEPARTMENT  
FOR LATEST  
PRICES ON ALL  
MATERIALS  
AND  
EQUIPMENT



## IDEAL HOMES

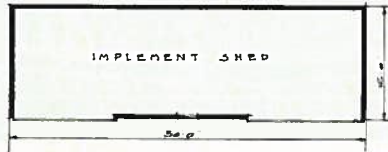


### EASYBILT

EATON PLAN BOOK

E100

SIZE 16 x 50; 7 FT. STUDDING



### USEFUL FARM BUILDINGS - - EASY TO ERECT

A Machine Shed that will hold all the machines that are found on the average farm. No farmer who wishes to be successful can afford to let his machines lay out in the weather.

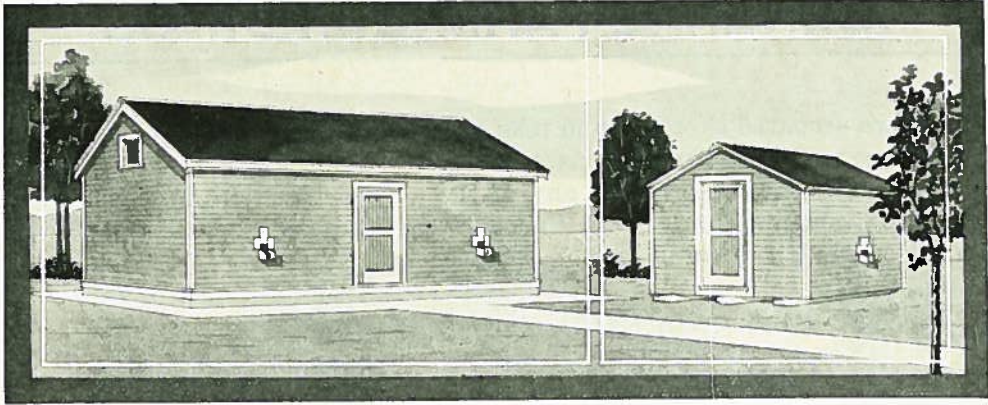
There is no part of a farmer's business that deserves more attention and care than the various kinds of machinery that is needed for successful farming. As a general rule the prosperity of the farmer may be estimated by the way he cares for his machinery. Poor care indicates shiftlessness, waste and the necessity of buying more machinery in a short time. Good care, on the other hand, indicates prosperity, development, bank deposits and long-lived machinery; hence the importance of having a shed where your machines can be safely stored when not in use and repaired in spare moments.

It is equally important that you should also have storehouses where your crops can be safely stored until the most favorable moment arrives for putting them on the market.

Every farmer who wishes to be successful should have these valuable buildings. We will provide you with plans that will enable any handy man to erect them. Get your neighbors to join you and buy a carload. We mark each order and load them separately in the car, so that there is no difficulty in sorting out material when it arrives.

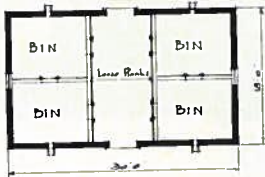
WRITE OUR HOME BUILDING DEPARTMENT FOR LATEST PRICES  
ON ALL MATERIALS AND EQUIPMENT

# IDEAL HOMES



## EATONIAN

EATON PLAN BOOK  
E101



SIZE 18 x 30; 8 FT. STUDDING

This is a substantial and well constructed Farm Granary, and very conveniently arranged. It is divided into four bins with a good passage throughout the centre, this passage could be divided in two, making a fifth bin, and still leave sufficient room for fanning mill. The construction throughout is dependable—6 x 6 sills, 2 x 6 studs and joists, 2 x 4 rafters, 1 x 10 roof boards, No. 1 XXX B.C. cedar shingles, No. 3 fir drop siding.

## EARFORD

EATON PLAN BOOK  
E102

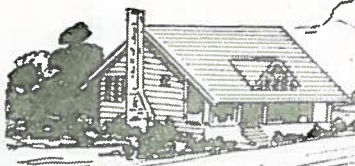


SIZE 12 x 16; 7 FT. STUDDING

This portable Granary should find favor with practical farmers. It will hold about 1,000 bushels of wheat.

Construction—6 x 6 sills, 2 x 6 studs and joists, 2 x 4 rafters, 1 x 10 roof boards, No. 3 fir drop siding, No. 3 fir flooring, and No. 1 XXX B. C. cedar shingles.

WRITE OUR HOME BUILDING DEPARTMENT FOR LATEST PRICES  
ON ALL MATERIALS AND EQUIPMENT



## IDEAL HOMES

### GENERAL FARM BUILDINGS

We have prepared sketches and bills of material of the buildings listed on this page to enable our customers to add any that may be desired to their order, when the material for any of the chosen plans do not meet with the requirements of a carload, that is to say, the capacity and weights of a carload as laid down by law.

#### E103—HOG BARN

Size 24 ft. x 29 ft.; 10 ft. Studding.  
Capacity, 12 hogs.

#### E104—COMMUNITY ICE HOUSE

18 x 28 ft.; 20 ft. Studding.

#### E105—FARM ICE HOUSE

12 x 12 ft.; 12 ft. Studding

#### E106—FARM MILK HOUSE

10 x 12 ft.; 8 ft. Studding.  
Capacity, 10 to 20 cows.

#### E107—FARM MILK HOUSE

12 x 20 ft.; 8 ft. Studding.  
Capacity, 15 to 20 cows.

#### E108—FARM MILK HOUSE

12 x 34 ft.; 8 ft. Studding.  
Capacity, 20 to 30 cows.

#### E109—POULTRY HOUSE

Span Roof.  
12 x 28 ft.; 6 ft. Studding.

#### E110—POULTRY HOUSE

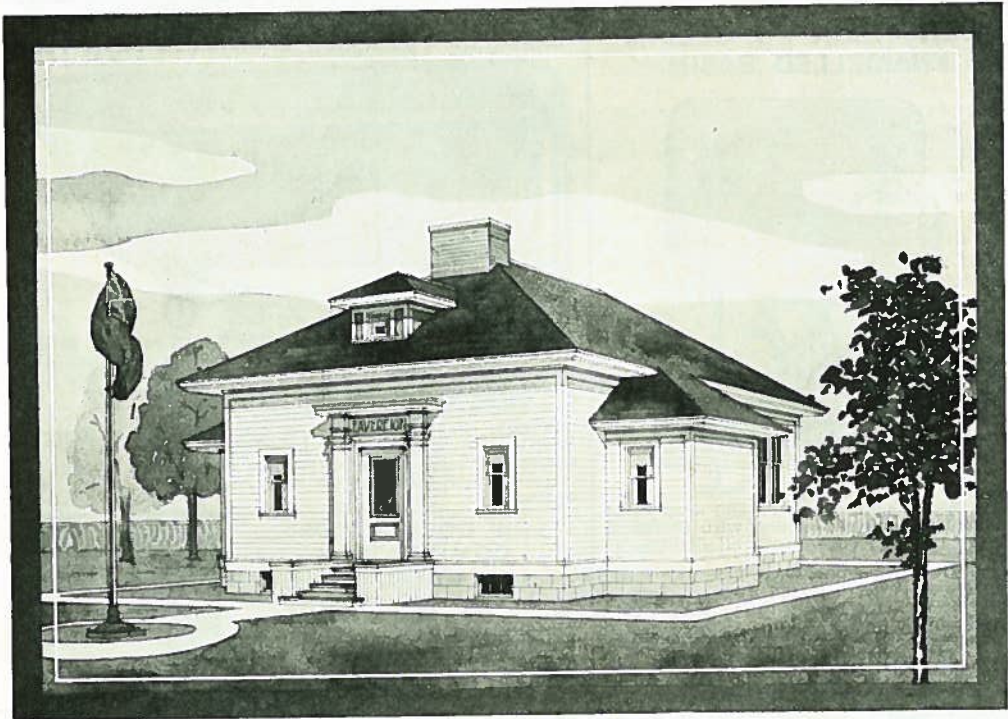
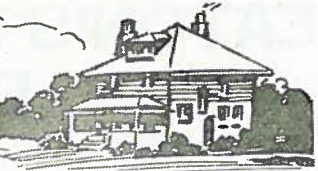
Shed Roof.  
12 x 14 ft.; 7 ft. Studding, 4 ft. at rear.

#### E111—GARAGE

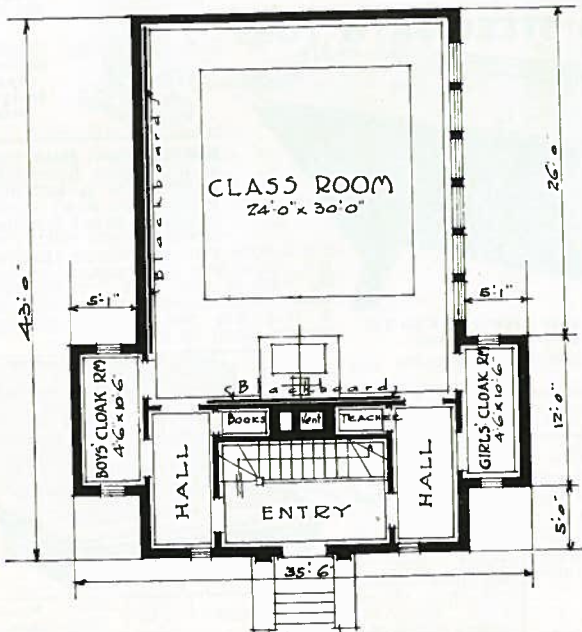
12 x 20 ft.; 8 ft. Studding.

WRITE OUR HOME BUILDING DEPARTMENT FOR LATEST PRICES  
ON ALL MATERIALS AND EQUIPMENT

# IDEAL HOMES



**EAVEREIGN**  
EATON PLAN BOOK



The rural district is coming into its own. Too long has the country paid tribute to the city in the migration of its young manhood and womanhood. The advanced educational policies of the Prairie Provinces offer a remedy. The little log school house is being replaced by the modern building.

The building shown here is admirably adapted for rural districts requiring only one room. Arrangement of interior, and mass, balance and proportion of exterior, leave nothing to be desired. Class room 24 ft. x 30 ft., will accommodate forty pupils in mixed grades. Ample cloak rooms. Requires no unsightly storm enclosures in winter. Designed with basement having two play rooms and toilets. Price also quoted on same building with concrete surface foundation, with stairs omitted, and sufficient material for two outside latrines. At EATON price this would be hard to equal as an asset for your district.

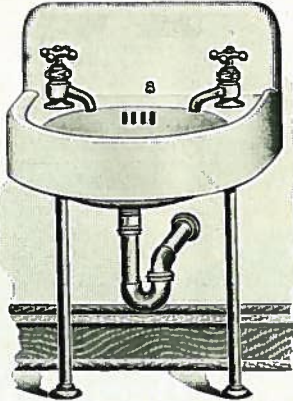
WRITE OUR HOME BUILDING DEPARTMENT FOR LATEST PRICES  
ON ALL MATERIALS AND EQUIPMENT

# EATON'S IMPERIAL BATHROOM EQUIPMENTS

**DO YOUR OWN PLUMBING. INSTALL YOUR OWN HEATING SYSTEM AND SAVE MONEY**

Our easily followed plans will make the work simple for you. Send us plan of house, showing complete layout, and we will forward you detailed estimate of cost of materials for complete installation.

## CAST-IRON PORCELAIN ENAMELLED BASIN

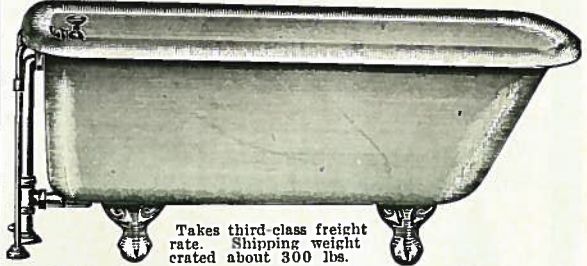


**58K1133.** Basin with back and deep front apron. Size 16x19 inches, with D-shaped bowl 10x13 inches, with all fittings, as illustrated.

**58K2266.** Basin only, less fittings.  
**58K3399.** Nickel-plated Basin Supply Pipes, for connecting to ½-inch waste pipes in floor.  
 Takes second-class freight rate. Shipping weight about 85 lbs.

We carry a complete line of Pipe, Fittings, etc., necessary for installation of Plumbing, Hot Air, Hot Water or Steam Heating Plants, and can quote you on individual requirements. Send your plan, and have our expert's advice and detailed estimate free.

## CAST-IRON PORCELAIN ENAMELLED BATH TUB



Takes third-class freight rate. Shipping weight crated about 300 lbs.

5 feet long by 30 inches wide. Has 3-inch roll rim, drilled for overflow pipe and standard bath cocks. Fitted with removable ball claw feet, and painted white outside.

**58K1130.** Bath, complete with all fittings, as shown.

**58K1129.** Bath only, less fittings.

**58K1003.** Nickel-plated water supply pipes, to connect bath taps to ½-inch water pipe in floor.

**58K1014.** Nickel-plated waste and overflow, 1¼-inch, to connect waste and overflow from bath to lead or iron pipe in floor.

## LOW DOWN CLOSET COMBINATION

Complete with 10-oz. copper-lined wood tank, golden oak finish, oak back strip seat, nickel-plated supply pipe and wash-down closet bowl.



**58K1121.** Closet Combination, as illustrated.

**58K1125.** Tank only.

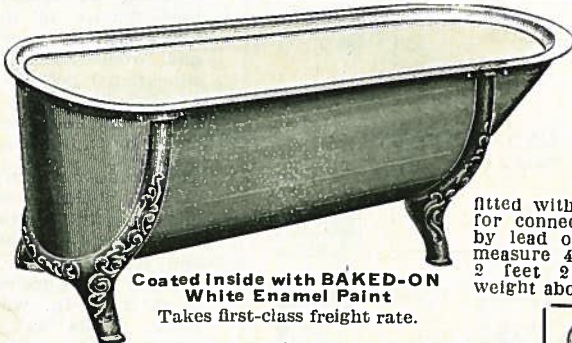
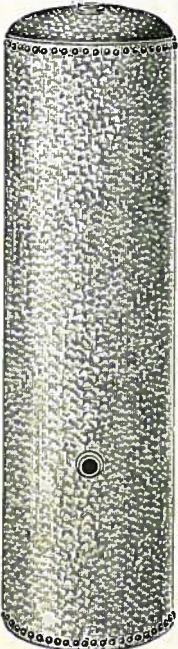
**58K1120.** Seat, with bolts and washers.

**58K1124.** Bowl only.

**58K1121.**  
Shipping weight about 100 lbs.

Takes second-class freight rate

## ENAMELLED STEEL BATH TUBS



Coated inside with BAKED-ON White Enamel Paint  
 Takes first-class freight rate.

Made of heavy gauge sheet steel, strongly braced with metal angle rim and fitted with cast-iron ornamental feet, which give added support to sides and bottom of tub.

### RANGE BOILER

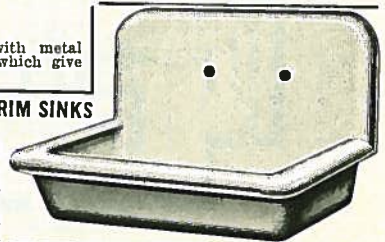
Made of heavy galvanized steel and tested to 200 lbs. pressure. Guaranteed for working pressure of 60 lbs. Capacity 30 gallons. Shipping weight 78 lbs. Takes third-class freight.

**58K925.** Boiler only.

**58K927.** Adjustable Stand for boiler.

### CAST-IRON ROLL RIM SINKS

With Back, Porcelain Lined Cast-iron Porcelain Enameled Sink, as illustrated. Made in one piece, with roll rim, fitted with strainer, centre outlet and concealed hanger support.

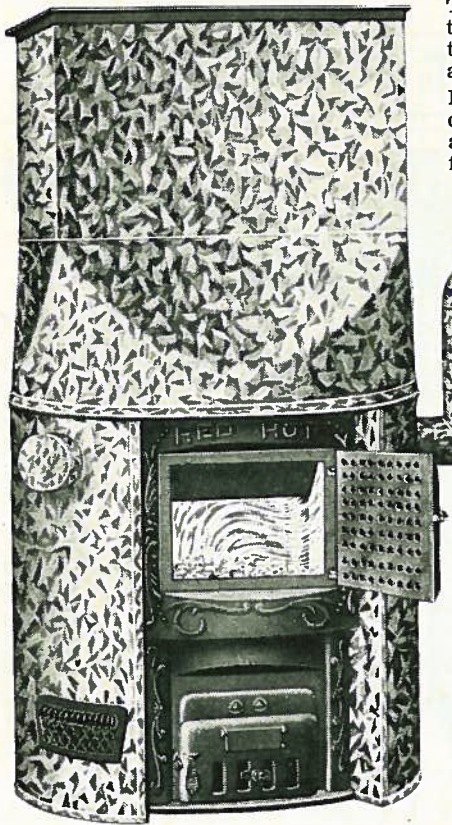


No.	Width	Lgth.	Ship. Wgt.	Prices Quoted on Request
<b>58K1026</b>	16	24	90 lbs.	
<b>58K1027</b>	18	30	130 lbs.	



# "RED HOT" PIPELESS FURNACE

## A CLEAN, ECONOMICAL AND HEALTHY HEATING SYSTEM



Think of it, a furnace with all the superior qualities of the "Red Hot"—two-piece firepot—long fire travel—dust and gas proof joints—with the advantage of having no pipes.

In the "Red Hot" Pipeless Furnace this principle of pipeless heating has been so scientifically applied that it will heat the building—even the furthest corners of it—comfortably and uniformly. The volume of cold and warm air has been proportioned with such exacting care, a circulation is set up that heats the room farthest away, and at the same temperature as the room nearest the furnace. That this pipeless furnace is altogether good is proven by the fact that it is our "Red Hot" Furnace modified to pipeless heating needs.

Read carefully the description of our "Red Hot" Furnace mentioned on following page. The same applies to the "Red Hot" Pipeless, with the exception, of course, that you need no warm air pipes. The "Red Hot" Pipeless Furnace is complete in itself. Note illustrations.

The EATON "Red Hot" Furnaces will burn Hard Coal, Soft Coal or Wood. For those who desire to burn wood only, however, we recommend our Wood Burning Furnace—it is designed specially to burn wood, and will give better results. Get our prices on Wood Burning Furnaces.

Owing to the difference in the layout of houses, etc., it is necessary for us to quote prices on complete heating plants in each separate case. Send us a Plan or Drawing of your Building, drawn on scale of 1/4 inch to the foot, showing all doors, windows, partitions, and location of chimney, and let us give you an estimate. Three days are required to fill orders for Complete Heating Plants.

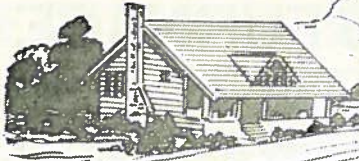
### THE SAVING OF A "RED HOT" PIPELESS

A "Red Hot" Pipeless Furnace heats properly, is very suitable for many buildings, and it is easy to install. The furnace is complete in itself. No pipes required except the smoke pipe—no holes or cutting through the house, with the exception of one opening to be cut on main floor above the furnace for one register for the heat to travel and warm the house. No large number of men is necessary to install it. Installation can be done in one day.

The Pipeless is particularly the best of all for houses with no furnace piping—in churches, one-roomed schools, halls, etc. In buildings with hot water or steam heat it will supply the circulation so necessary to health, and with these heating systems it supplies warmth in Spring and Fall, when only temporary heat is needed. Houses with little head room in the cellar should install a "Red Hot" Pipeless.

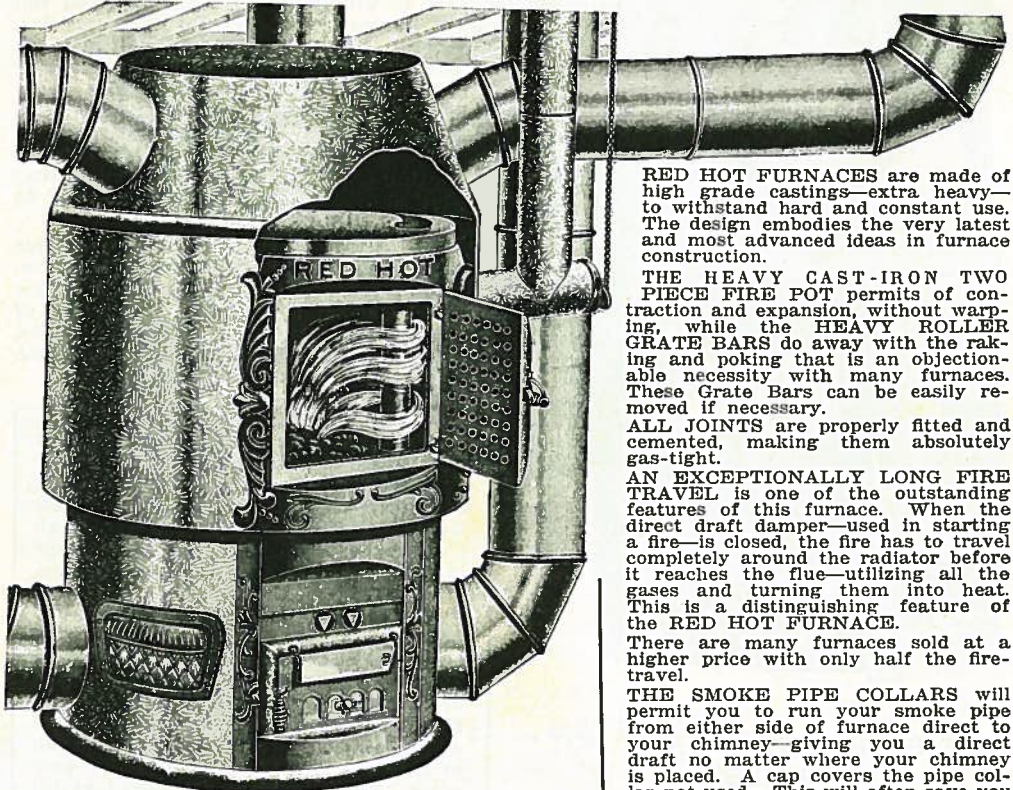


Order No.	Cubic Feet Heating Capacity	Diameter Firepot	Radiator	Shipping Weight, Complete	Prices Quoted on Request
45K503	8,000	18 1/4 -in.	32-inch	740 lbs.	
45K504	12,000	20-in.	36-inch	900 lbs.	



## IDEAL HOMES

# EATON RED HOT FURNACES



RED HOT FURNACES are made of high grade castings—extra heavy—to withstand hard and constant use. The design embodies the very latest and most advanced ideas in furnace construction.

THE HEAVY CAST-IRON TWO PIECE FIRE POT permits of contraction and expansion, without warping, while the HEAVY ROLLER GRATE BARS do away with the raking and poking that is an objectionable necessity with many furnaces. These Grate Bars can be easily removed if necessary.

ALL JOINTS are properly fitted and cemented, making them absolutely gas-tight.

AN EXCEPTIONALLY LONG FIRE TRAVEL is one of the outstanding features of this furnace. When the direct draft damper—used in starting a fire—is closed, the fire has to travel completely around the radiator before it reaches the flue—utilizing all the gases and turning them into heat. This is a distinguishing feature of the RED HOT FURNACE.

There are many furnaces sold at a higher price with only half the fire-travel.

THE SMOKE PIPE COLLARS will permit you to run your smoke pipe from either side of furnace direct to your chimney—giving you a direct draft no matter where your chimney is placed. A cap covers the pipe collar not used. This will often save you space and do away with the necessity of using too many elbows in your smoke pipe.

THE DAMPERS give absolute control. The Front Door is large enough to admit good sized pieces of wood—when it is necessary to use wood as fuel.

A CLEAN-OUT DOOR IS PROVIDED at the back of radiator, where it should be.

RED HOT FURNACES will burn Hard Coal, Soft Coal or Wood. For those who desire to burn wood only, however, we recommend our IMPERIAL WOOD BURNING FURNACE—it is designed specially to burn wood, and will give better results.

OUR RED HOT FURNACE is correctly designed and proportioned to do its work just as thoroughly when the thermometer is below zero.

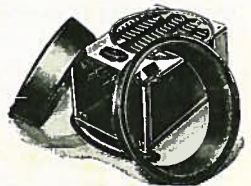
IT IS MADE by skilled workmen in one of the most up-to-date factories in the Dominion of Canada. Not a single feature has been overlooked to make it the best furnace obtainable for the money.

THIS IS WHY THE RED HOT FURNACE has become so popular throughout Western Canada. If your neighbor has one, he will tell you that it is the best furnace value you can get anywhere.

PRICES OF WARM AIR REGISTERS AND FACE PLATES ON APPLICATION.

PRICES FOR OUR "IMPERIAL" 3-DRUM WOOD FURNACES ON APPLICATION.

"Red Hot" Furnaces have heavy Sectional Fire Pot and Roller Grate Bars.



### SPECIFICATIONS OF EATON'S RED HOT FURNACES

Order No.	Cubic Feet Heating Capacity	Diam. Measurements		Radiator	Height with Casing	Weight with Casing	Weight without Casing
		Upper Casing	Pot				
45K500	8,000	38 in.	18 1/4 in.	32 in.	4 ft. 5 in.	600 lbs.	555 lbs.
45K501	12,000	42 in.	20 in.	36 in.	4 ft. 9 in.	730 lbs.	675 lbs.
45K502	18,000	46 in.	23 in.	40 in.	5 ft.	855 lbs.	795 lbs.

Three days are required to fill orders for complete Heating Plants. Takes third-class freight rate.

# IDEAL HOMES



## FOR WESTERN CANADIAN HOMES

### HAVE YOU CONSIDERED THE INSTALLATION OF A FURNACE?



IF POPULARITY IS A DETERMINING FACTOR in the merit of a manufactured product, then the RED HOT FURNACE certainly needs no further introduction. Ask builders, architects, contractors and our hundreds of satisfied customers. RED HOT FURNACES are built for heating every type and size of dwelling house, school, church, public hall, etc.

THE LARGE DOUBLE FEED DOOR is to allow the use of rough pieces of wood for Spring and Fall, when only a small amount of heat is required.

THE LOW SETTING enables the RED HOT FURNACE to be placed in low cellars, and provides for the correct elevation of hot air pipes.

THE REINFORCED FLANGES on fire pot add additional strength, and also materially increases the radiating surface.

THE GRATES consist of four three-faced bars, fitted with cogs and operated in pairs by one shaker.

GRATES are easily removed by unscrewing the front plate above ashpit door. They are extra heavy and will easily crush all clinkers.

IN PLANNING YOUR NEW BUILDING specify in your plans a RED HOT FURNACE, and have the building properly arranged for same. As stated, it will cost you less than any other system of heating, and you will find the RED HOT the most satisfactory furnace you could install.

OWING TO THE DIFFERENCE IN THE LAYOUT of houses, etc., it is necessary for us to quote prices on complete heating plants in each separate case. Send us a plan or drawing of your building, drawn on scale of  $\frac{1}{4}$  inch to the foot, showing all doors, windows, partitions, and location of chimney, and let us give you an estimate.

WHEN ASKING FOR AN ESTIMATE state what system of heating you desire: Steam, Hot Water or Warm Air Heating, and, if the latter, whether you use wood or coal for fuel.

REMEMBER, you place yourself under no obligations to buy by sending us your plans and asking for prices.

TWO DAYS ARE REQUIRED to fill orders for complete heating plants.

**THE T. EATON CO.** LIMITED  
WINNIPEG CANADA

# BRITISH COLUMBIA LUMBER



## DIRECT TO YOU