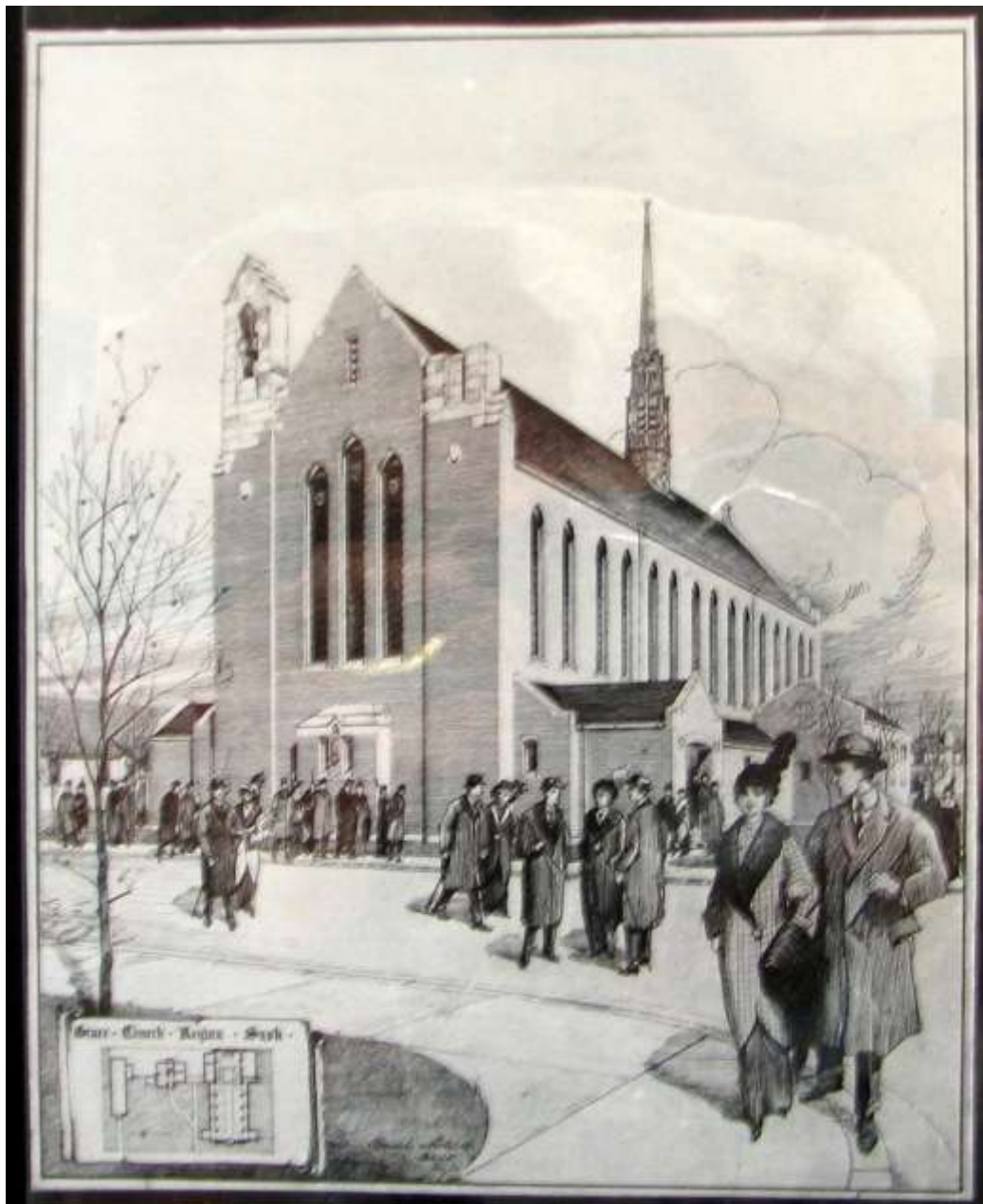


St. Matthew's (Grace) Anglican Church and Rectory

2165 (Church) and 2161 (Rectory) Winnipeg Street, Regina, Saskatchewan

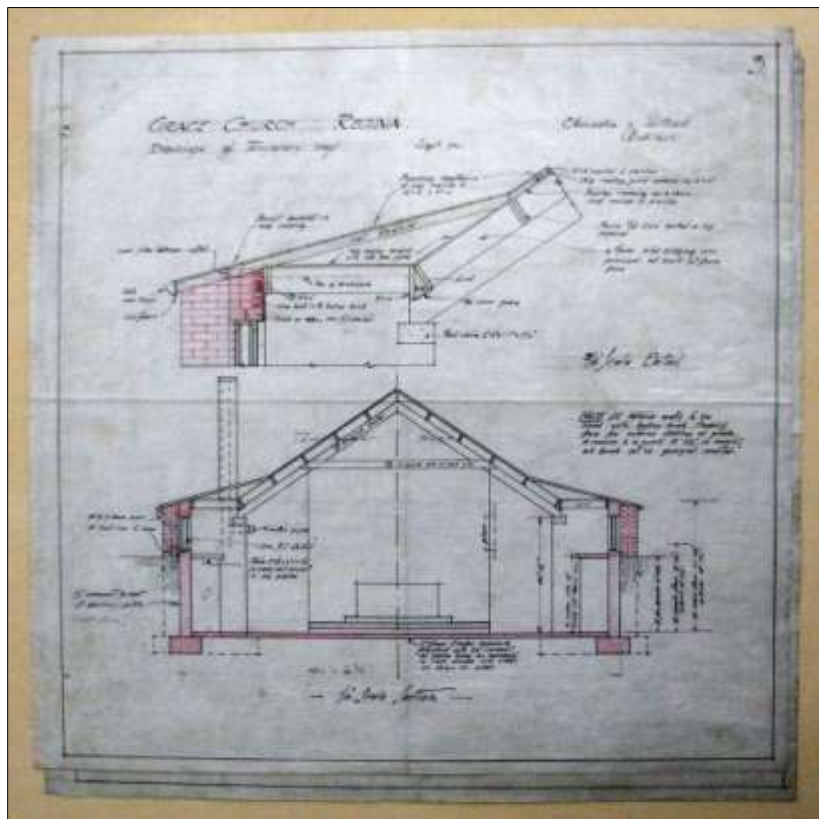
Historical Overview:

St. Matthew's Anglican Church was initially established as Grace Anglican Church, and operated out of a small frame structure from 1910 until 1921. In 1913 the congregation commissioned Regina architects Clemesha and Portnall to design a new place of worship, as well as an accompanying rectory. The church was to be an impressive and imposing building, as seen in this drawing:



Presentation Drawing: Grace Anglican Church, Regina
Source: Provincial Archives of Saskatchewan: R-B 8749

According to the parish history, the basement was built about 1915. Completion of the church was deferred due to the World War that has started the previous year. In 1921 architect Frank Portnall designed a roof to cover the open basement, presumably so that the exposed brickwork would not deteriorate and so that it could be used for services until sufficient funding could be obtained to complete the project.



Drawing for the temporary roof on Grace Church
Source: Provincial Archives of Saskatchewan: R-P2-15.

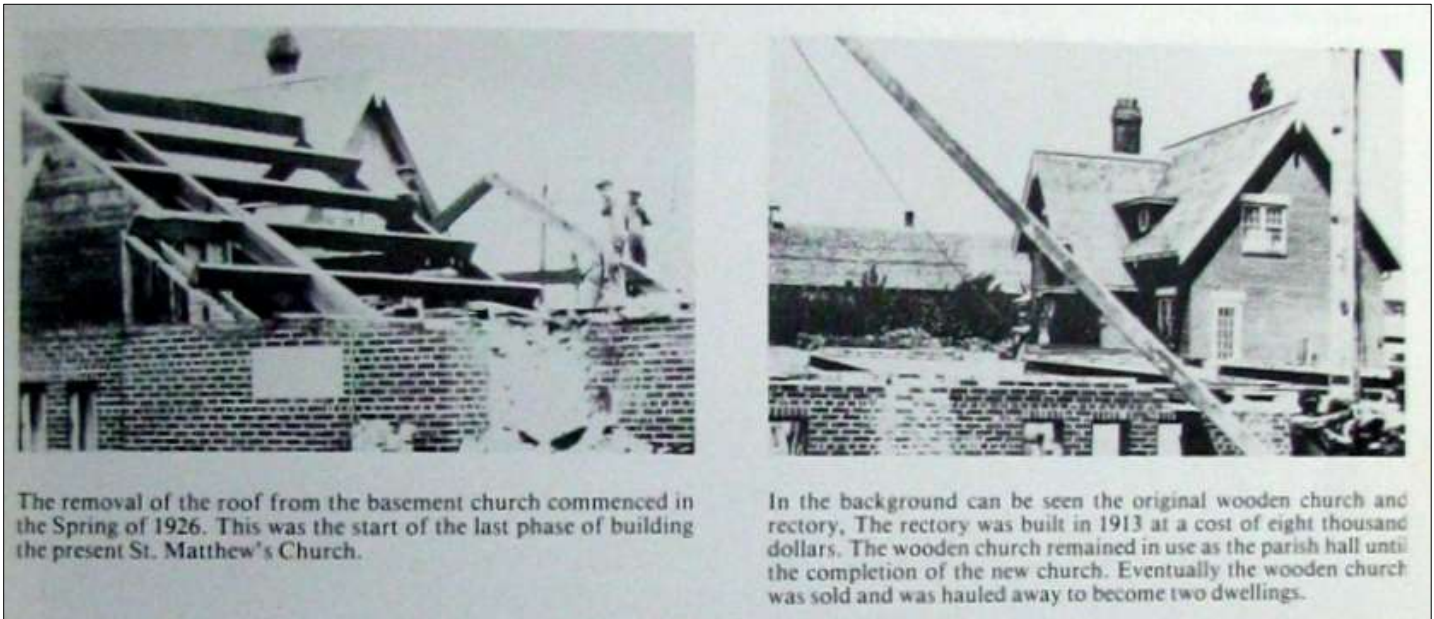


Interior view of the basement church
Source: Provincial Archives of Saskatchewan: R-A 18,789



The laying of the datestone on Oct. 9, 1921 by the Hon. Henry W. Newlands, was one of the large number of public activities undertaken by the newly appointed Lieutenant Governor of Saskatchewan.

Photo by: Frank Korvemaker, 16 Feb. 2009

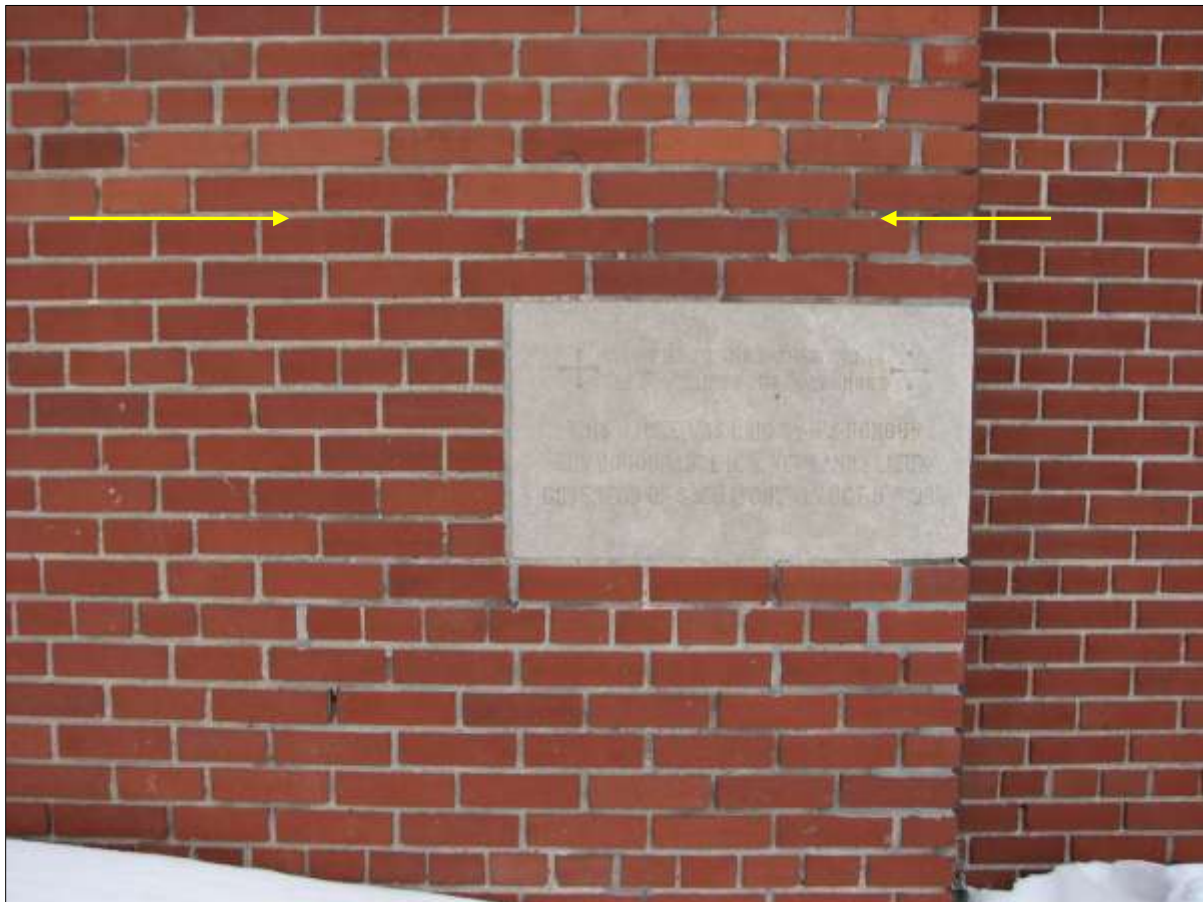


The removal of the roof from the basement church commenced in the Spring of 1926. This was the start of the last phase of building the present St. Matthew's Church.

In the background can be seen the original wooden church and rectory. The rectory was built in 1913 at a cost of eight thousand dollars. The wooden church remained in use as the parish hall until the completion of the new church. Eventually the wooden church was sold and was hauled away to become two dwellings.

Removing the roof from the basement church in 1926

Source: *St. Matthew's Anglican Church: Seventy-fifth Anniversary 1985*



A change of brick colour marks the approximate level at which the old basement roof was situated, just above the datestone.

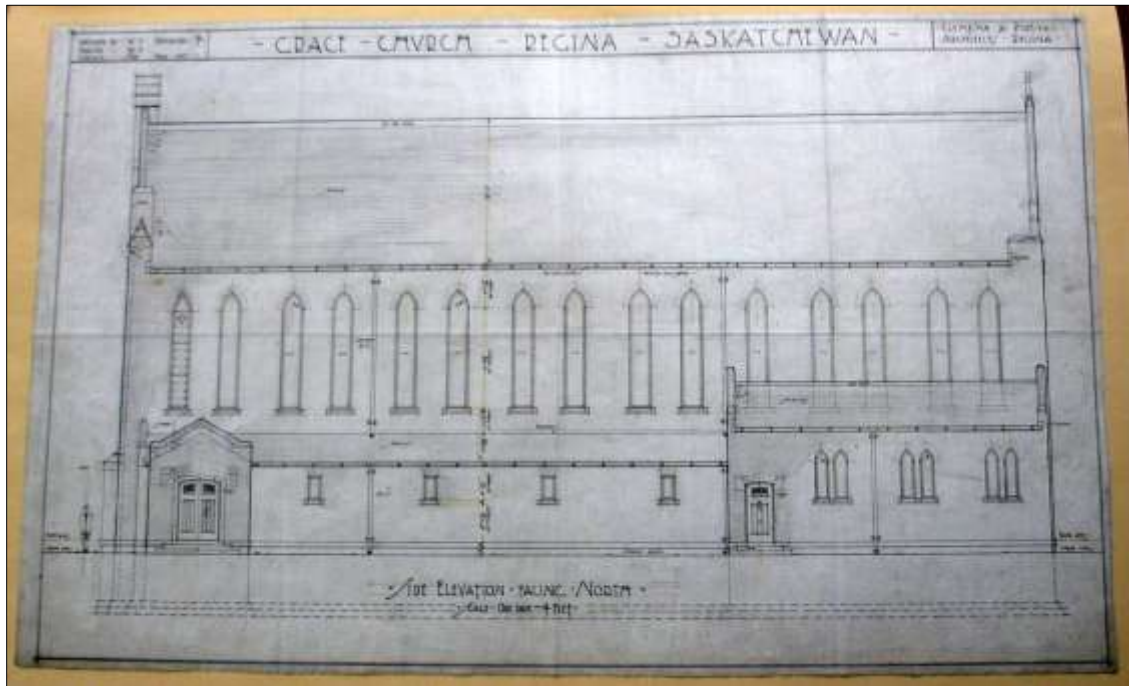
The darker original bricks are below the yellow arrows; while the newer orangey-red bricks were used above that point.

Photo by: Frank Korvemaker, 16 Feb. 2009

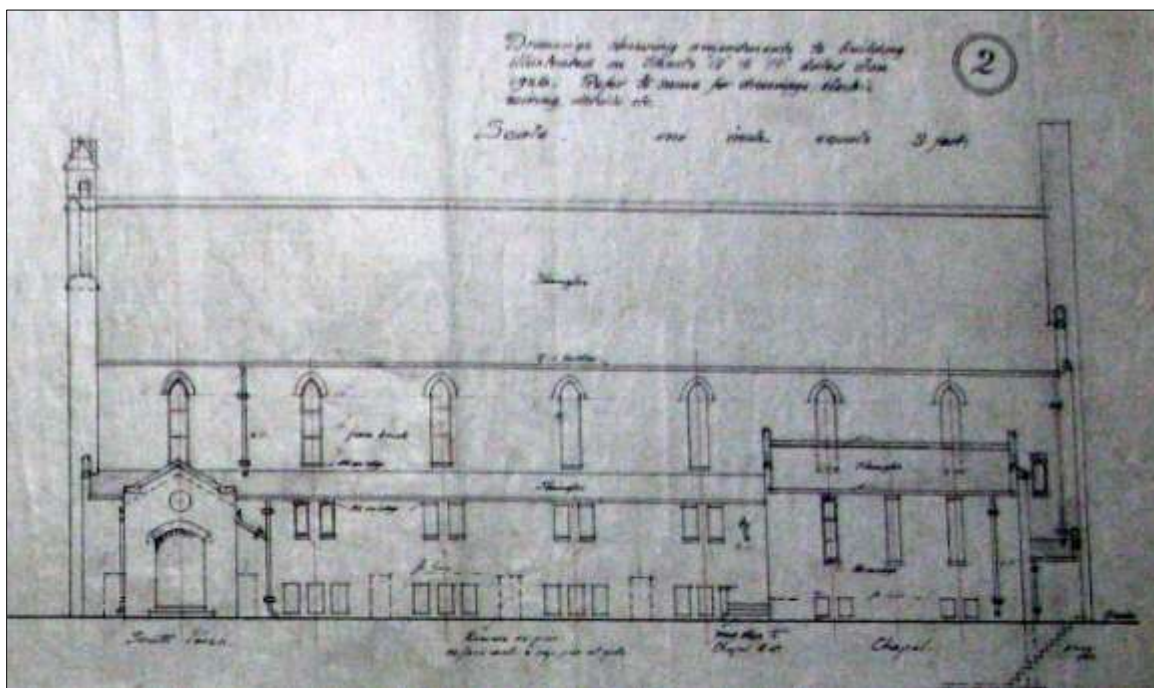
Grace Church, originally named for Grace Broder, who started the Sunday School and whose parents donated the farm land on which the church and rectory would be built, became the Parish Hall in 1921, when the new basement foundation was roofed over, renamed St, Matthew's Church, and consecrated by Bishop Harding.

In 1926 an anonymous English donor provided the necessary funds to redesign the church and achieve its completion. Frank Portnall, who also designed the nearby Bishop's Court and Maple Leaf Hostel on the Diocese of Qu'Appelle site at the SE corner of College and Broad Street, was commissioned to modify and redraw the 1913 plans. The resultant construction took place throughout 1926 by a Regina-based construction company: Bird and Woodall. It was basically complete when Bishop Harding consecrated the new church on October 13, 1926, almost exactly five years after Lieut. Gov. Newlands had laid the datestone.

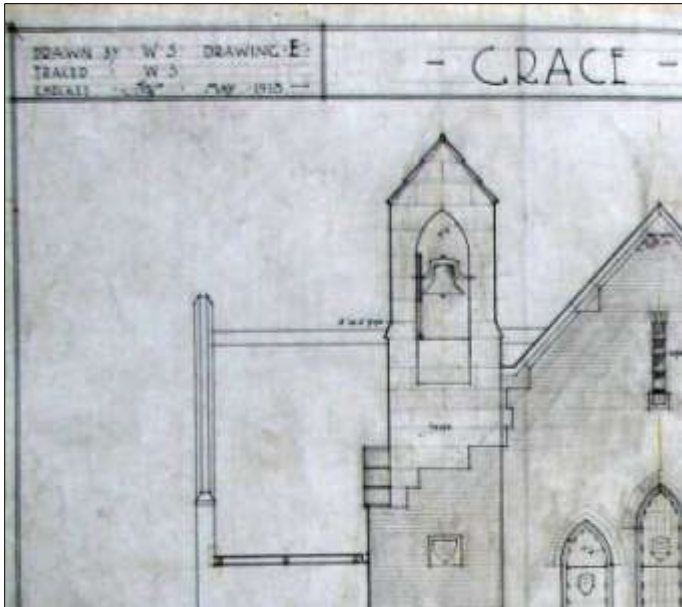
The new church design retained the same overall proportions, but the number of windows along the north and south aisles was cut in half, and several other costly ornaments were deleted or modified, such as the use of brick instead of stone at the top of the bell tower, and elimination of the decorative slender spire.



The original 1913 Clemesha and Portnall design for the south facade of Grace Church
Source: Provincial Archives of Saskatchewan: R-P2-7



The revised 1926 Portnall design for the south facade of Grace Church
Source: Provincial Archives of Saskatchewan: R-P2-2



The 1913 stone bell tower design and the present view of the brick structure

Sources: (L) Provincial Archives of Saskatchewan: R-P2-7

(R) Frank Korvemaker, 5 April 2017



St. Mathew's Anglican Church shortly after completion in 1926.

The dark bricks near the bottom indicate the extent of the basement when it supported a roof for five years.

Source: Provincial Archives of Saskatchewan (R-B 4018-1)



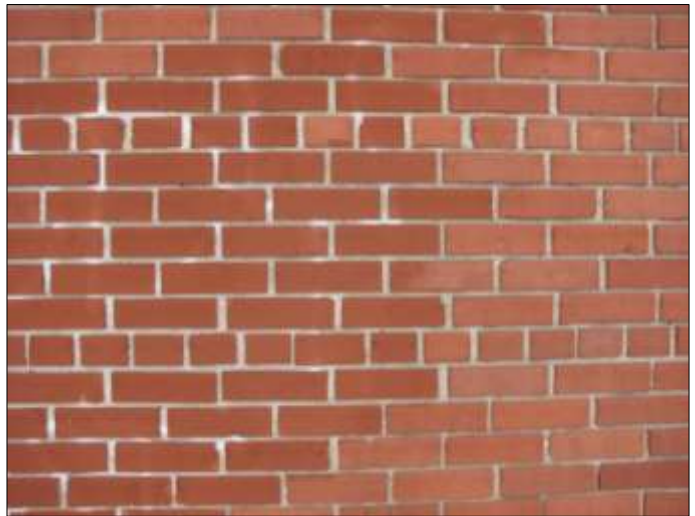
Church: view facing NE



View facing NW



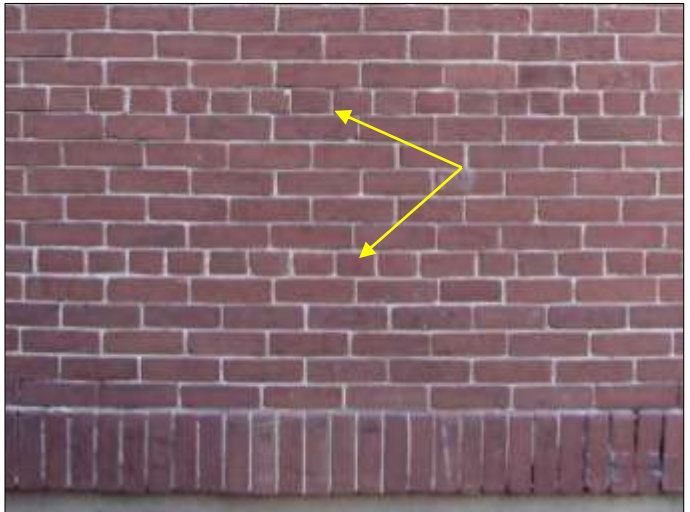
The west facade, and bell tower



Detail of the orangey-red Redcliff brick pattern on the church



West facade of the Rectory, built in 1913.



Detail of the dark red Menominee brick on the Rectory

NOTE: A row of header bricks (yellow arrows) are placed above every five rows of stretcher bricks to interlock the face bricks to the interior masonry core of the walls.

The Architects:

The original design for St. Matthew's (Grace) Anglican Church was prepared in 1913 by the Regina firm of Clemesha and Portnall. The actual drawings were signed by "W. S." (William Swan), who worked with various firms and later in private practice from his home in Punnichy. It is not known who formulated the overall original design for this large church. All three architects had their initial training in England, and this building certainly has an "English" flavour to it. (Ref: BDAC links)

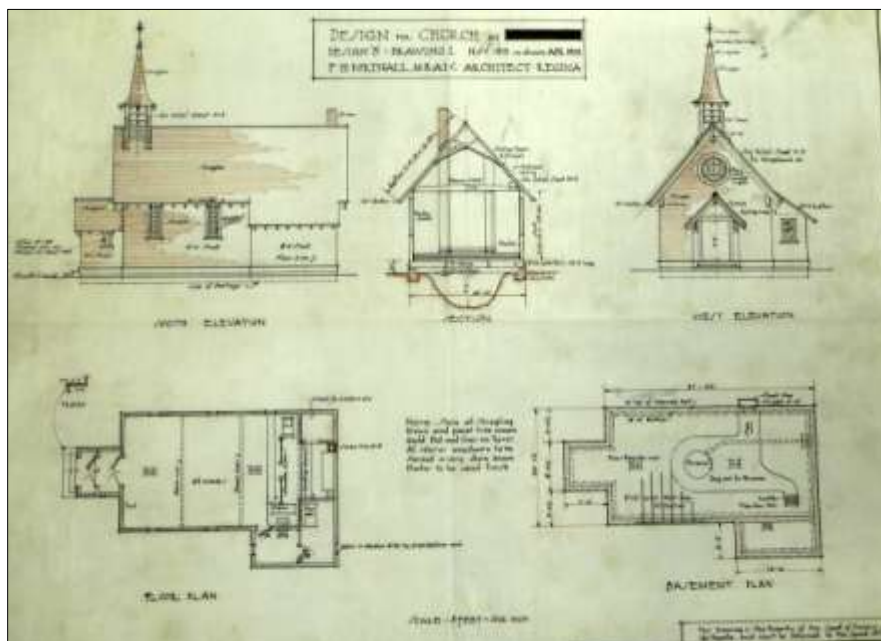


F.C. Clemesha in 1913

William Swan in 1913

Frank Portnall in 1933

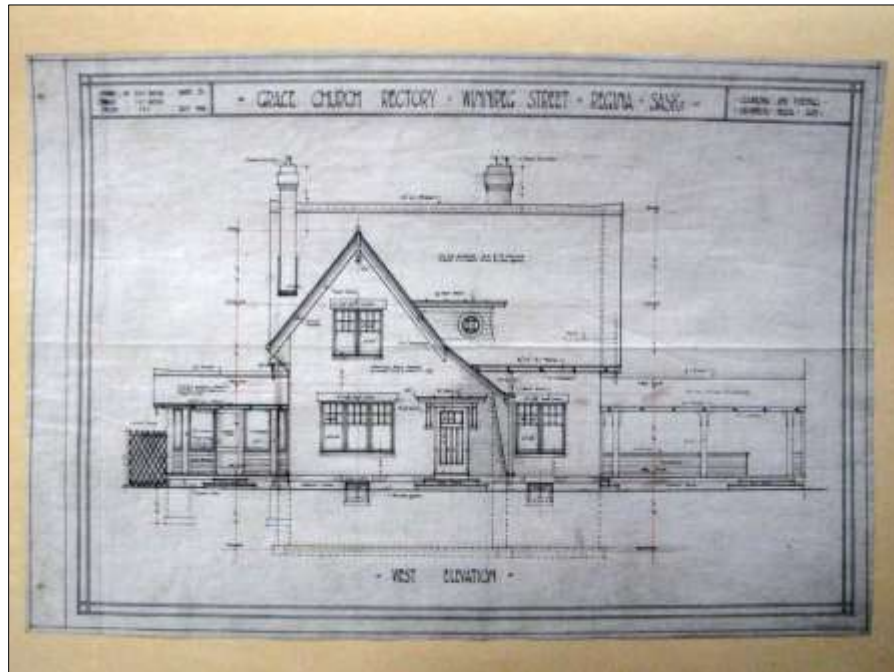
Portnall also designed other Anglican churches, including a standard plan for small rural churches along newly-created communities served by the Railway Mission.



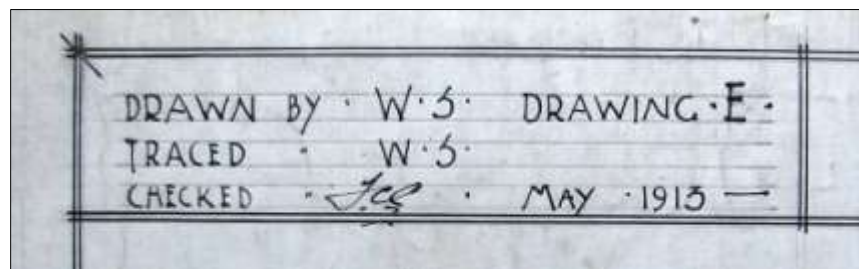
Initial design 1913; revised 1928

Source: Provincial Archives of Saskatchewan: R.P 2, III-13-40

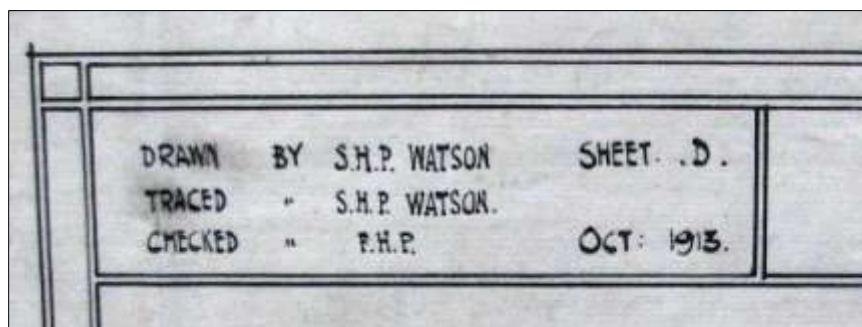
The drawings for the adjacent Rectory were prepared by S.H.P. Watson, apparently a draftsman with the firm of Clemesha and Portnall in 1913. No further information is known about Watson.



Front (west) facade of the Anglican Rectory, 1913
Source: Provincial Archives of Saskatchewan: R-P 2-9



Church: W.S. (William Swan) & F.C.C.



Rectory: S.H.P. Watson & F.H.P.

The names of the draftsmen who prepared the drawings are provided in the title block: Portnall checked the accuracy of the Rectory drawings, while Clemesha reviewed the church drawing. This could indicate which architect was responsible for the overall design of the Rectory and Church.

Sources: (Top) Provincial Archives of Saskatchewan: R-P 2-7
(Bottom) Source: Provincial Archives of Saskatchewan: R-P 2-9

Sources:

Biographical Dictionary of Architects in Canada: 1800-1950 , Robert G. Hill, editor

- Frederick Chapman Clemesha: <http://dictionaryofarchitectsincanada.org/node/1617>
- Francis Henry Portnall: <http://dictionaryofarchitectsincanada.org/node/1394>
- William Swan: <http://dictionaryofarchitectsincanada.org/node/1687>

Documents at the Provincial Archives of Saskatchewan:

- R-B8749 – photo - detail of presentation drawing shown in history book, lower left corner
- R-A15,790 – Rev. & Mrs. H.D. Caesar and children outside Grace Church
- R-A15,789 – basement of Grace church
- R-B4018 (1-3) interior and exterior views of St. Matthew's Church
- R-P 2 , III – architectural drawings (F.H. Portnall Collection)
- Parish History: *St. Matthew's Anglican Church, Regina: Seventy-fifth Anniversary 1985*

Canada's Historic Places:

- St. Matthew's Anglican Church, Regina: <http://www.historicplaces.ca/en/rep-reg/place-lieu.aspx?id=13887>

Prepared on April 6, 2017 by:

Frank Korvemaker, S.A.A. (Hon.)

Ret'd Archivist / Construction Historian

59 Compton Road

Regina, Saskatchewan, S4S 2Y2

Tel: (306) 586-1405 E-Mail: frank@korvemaker.ca

and

Hon. Corporate Archivist for the Saskatchewan Association of Architects

For information on the Association: <http://saskarchitects.com/>